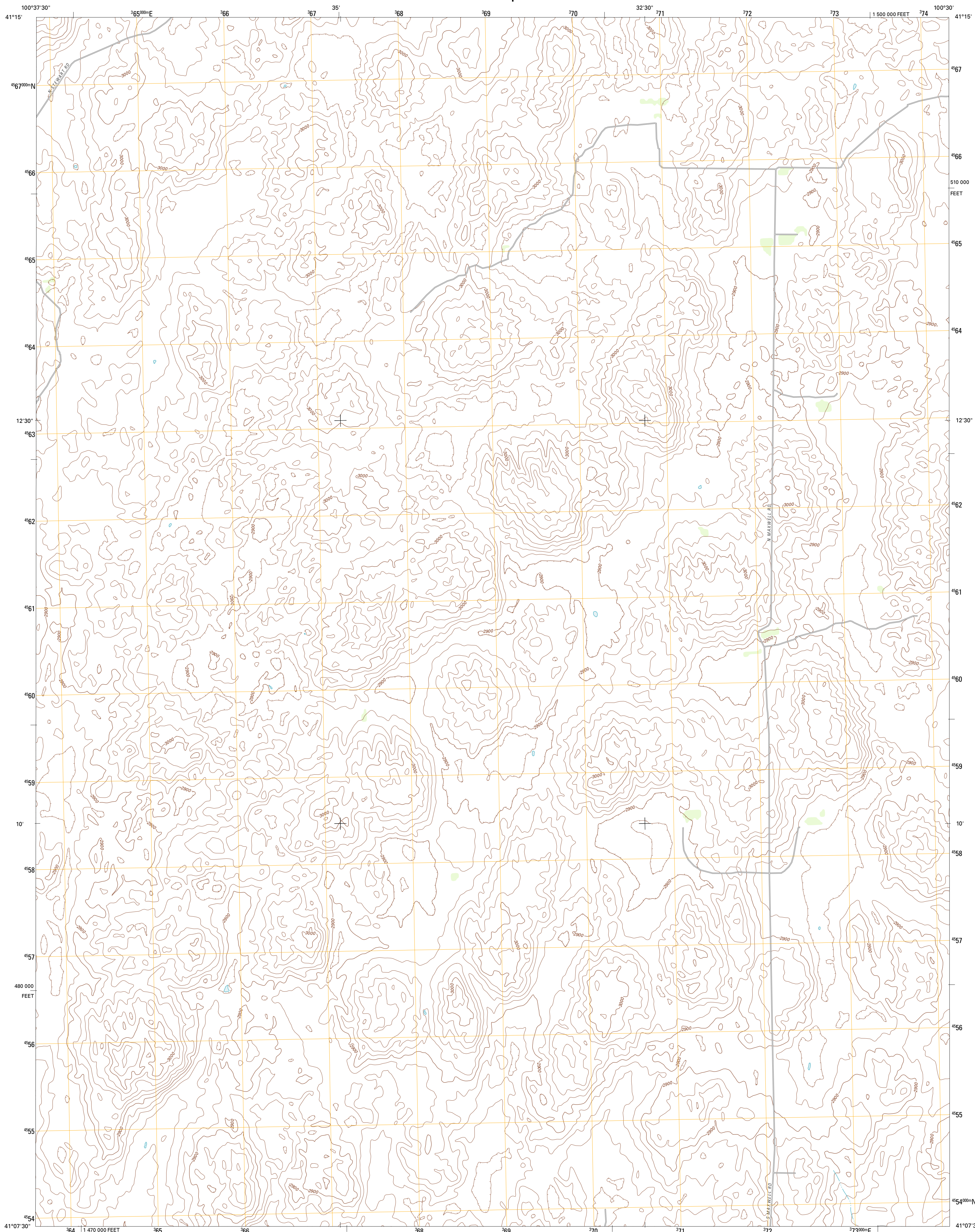




U.S. DEPARTMENT OF THE INTERIOR
U. S. GEOLOGICAL SURVEY

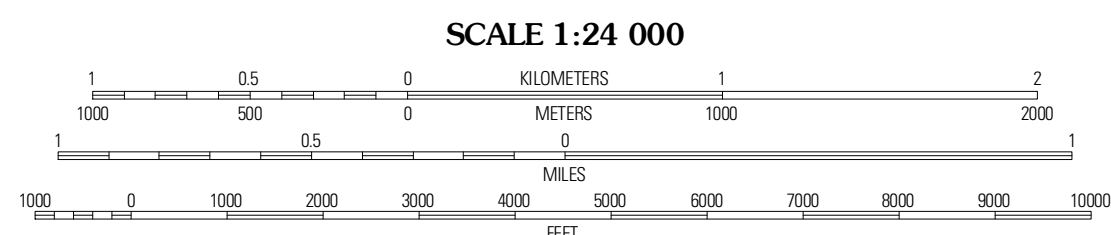
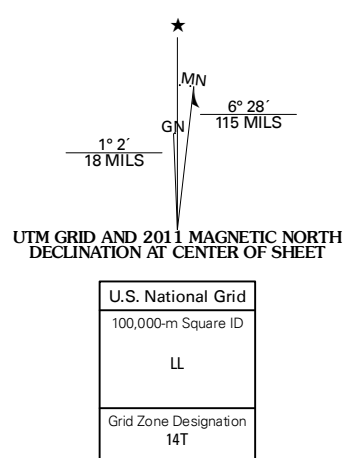


MAXWELL NE QUADRANGLE
NEBRASKA-LINCOLN CO.
7.5-MINUTE SERIES

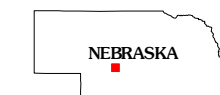


Produced by the United States Geological Survey
North American Datum of 1983 (NAD83)
World Geodetic System of 1984 (WGS84). Projection and
1 000-meter grid: Universal Transverse Mercator, Zone 14T
10 000-foot ticks: Nebraska Coordinate System of 1983

Imagery.....NAIP, July 2010
Roads.....©2006-2011 TomTom
Names.....GNIS, 2011
Hydrography.....National Hydrography Dataset, 2009
Contours.....National Elevation Dataset, 2002
Boundaries.....Census, IBWC, IBC, USGS, 1972 - 2010



SCALE 1:24 000
CONTOUR INTERVAL 20 FEET
NORTH AMERICAN VERTICAL DATUM OF 1988
This map was produced to conform with the
National Geospatial Program US Topo Product Standard, 2011.
A metadata file associated with this product is draft version 0.6.1



NEBRASKA

QUADRANGLE LOCATION

Stapleton SW	Stapleton SE	Gandy SW
North Platte East	Maxwell NE	Brady NW
Maxwell SW	Maxwell	Brady SW

ADJACING 7.5' QUADRANGLES

ROAD CLASSIFICATION
Interstate Route
US Route
Ramp
State Route
Local Road
4WD
State Route

MAXWELL NE, NE
2011