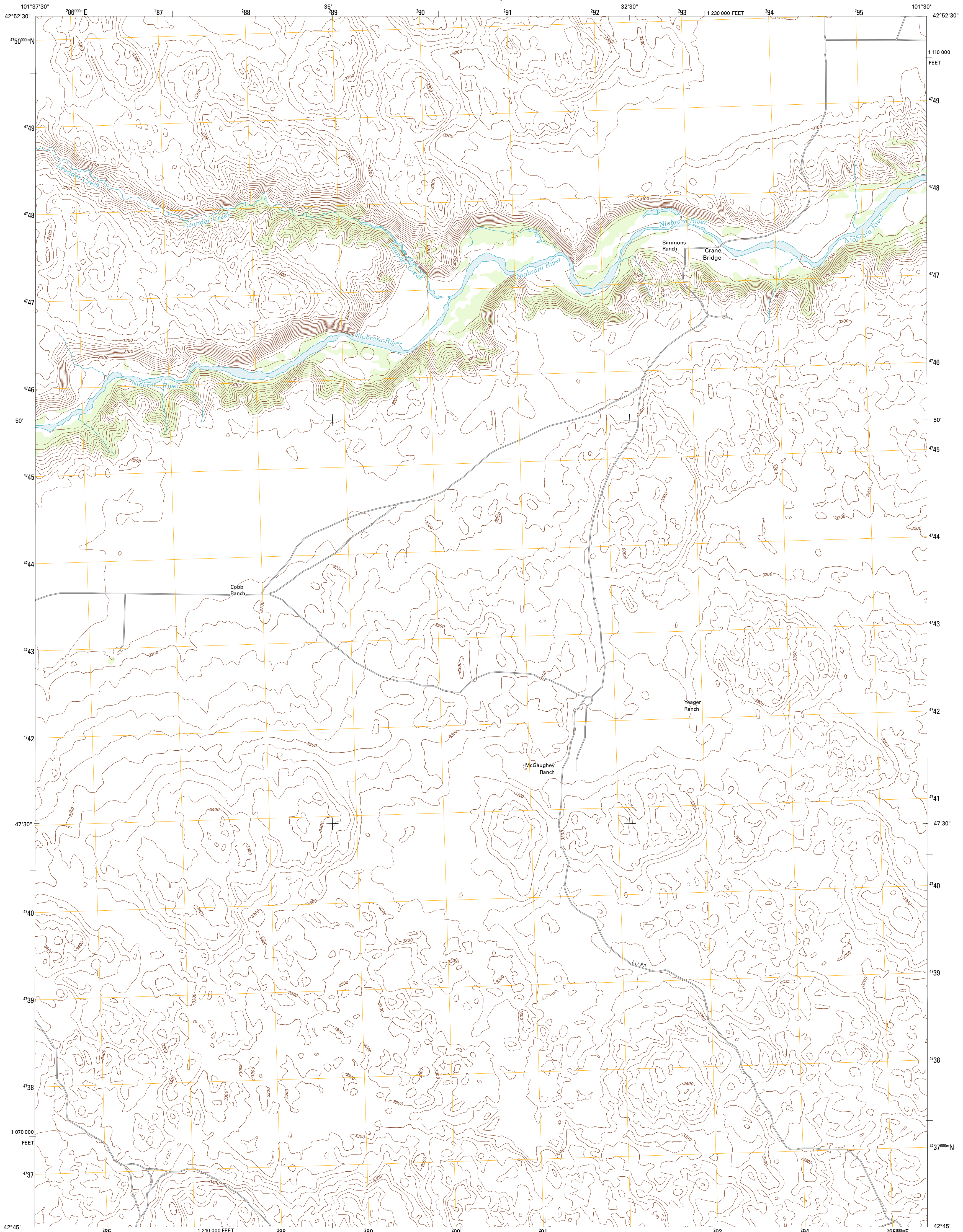




U.S. DEPARTMENT OF THE INTERIOR
U. S. GEOLOGICAL SURVEY

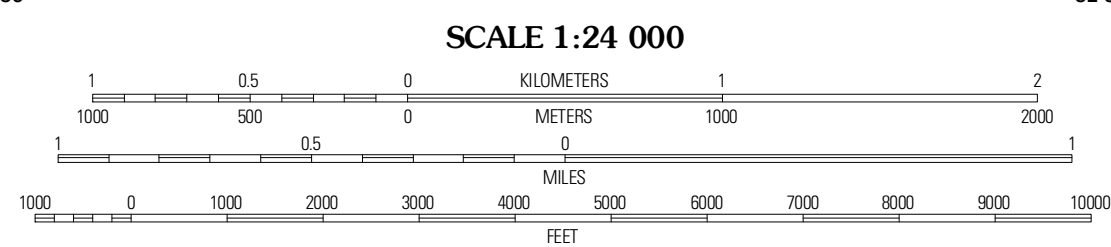
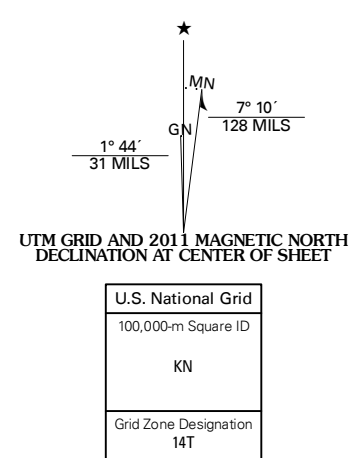


MERRIMAN SE QUADRANGLE
NEBRASKA-CHERRY CO.
7.5-MINUTE SERIES



Produced by the United States Geological Survey
North American Datum of 1983 (NAD83)
World Geodetic System of 1984 (WGS84). Projection and
1 000-meter grid: Universal Transverse Mercator, Zone 14T
10 000-foot ticks: Nebraska Coordinate System of 1983

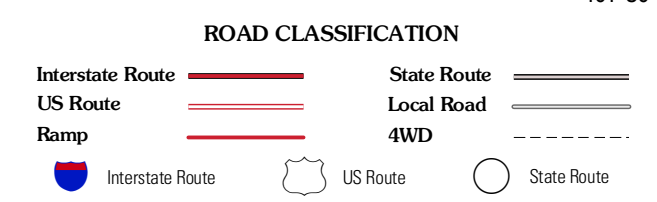
Imagery.....NAP, June 2010
Roads.....©2006-2011 TomTom
Names.....©2006-2011 TomTom
Hydrography.....National Hydrography Dataset, 2009
Contours.....National Elevation Dataset, 2002
Boundaries.....Census, IBWC, IBC, USGS, 1972 - 2010



QUADRANGLE LOCATION

Merriman	Merriman NE	EI
Merriman SW	Merriman SE	EI SW
Wild Mare Lake NW	Wild Mare Lake	Medicine Lake

ADJOINING 7.5 QUADRANGLES



CONTOUR INTERVAL 20 FEET
NORTH AMERICAN VERTICAL DATUM OF 1988

This map was produced to conform with the
National Geospatial Program US Topo Product Standard, 2011.
A metadata file associated with this product is draft version 0.6.1

MERRIMAN SE, NE
2011