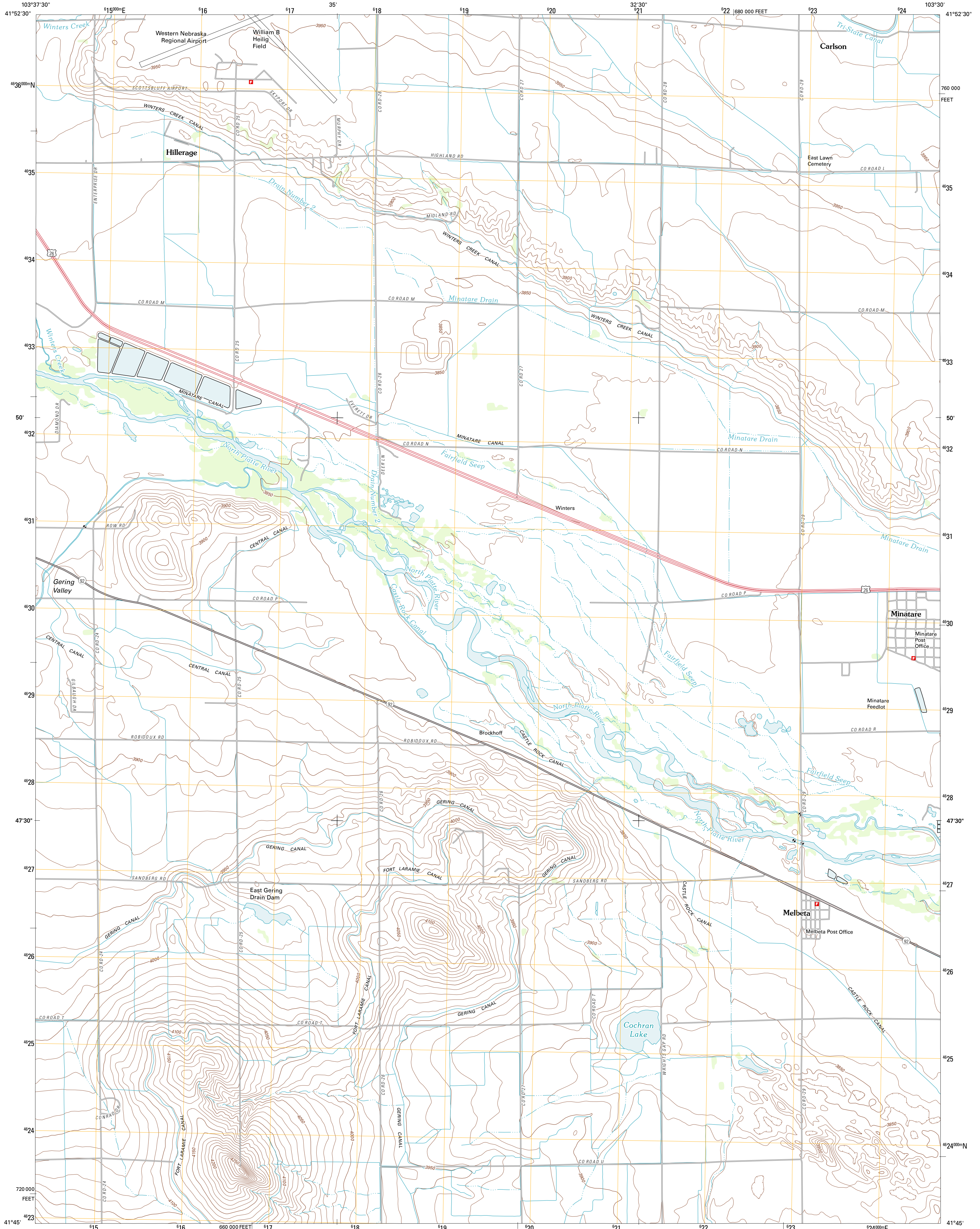




U.S. DEPARTMENT OF THE INTERIOR
U. S. GEOLOGICAL SURVEY

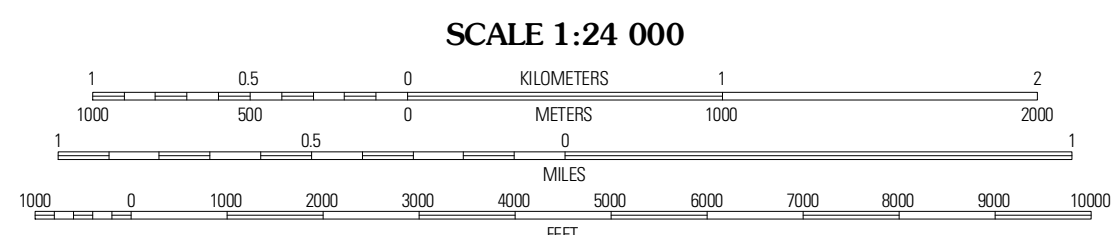
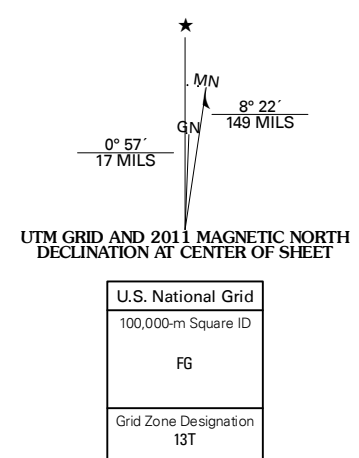


MINATARE QUADRANGLE
NEBRASKA-SCOTTS BLUFF CO.
7.5-MINUTE SERIES

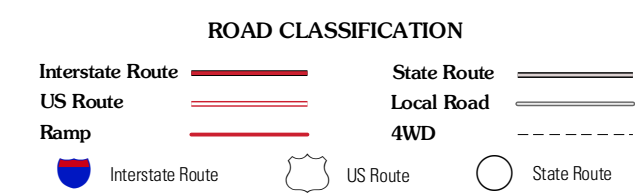
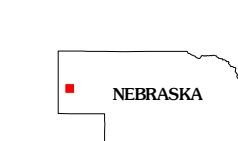


Produced by the United States Geological Survey
North American Datum of 1983 (NAD83)
World Geodetic System of 1984 (WGS84). Projection and
1 000-meter grid: Universal Transverse Mercator, Zone 13T
10 000-foot ticks: Nebraska Coordinate System of 1983

Imagery.....N.A.I.P., June 2010
Roads.....©2006-2011, TomTom
Names.....©2006-2011, TomTom
Hydrography.....National Hydrography Dataset, 2009
Contours.....National Elevation Dataset, 2002
Boundaries.....Census, IBWC, IBC, USGS, 1972 - 2010



CONTOUR INTERVAL 10 FEET
NORTH AMERICAN VERTICAL DATUM OF 1988
This map was produced to conform with the
National Geospatial Program US Topo Product Standard, 2011.
A metadata file associated with this product is draft version 0.6.1



QUADRANGLE LOCATION

Scotchbluff North	Lake Alice	Lake Minatare
Scotchbluff South	Minatare	Byard SW
Wildcat Mountain	Wright Gap	McGrew

MINATARE, NE
2011

ADJOINING 7.5' QUADRANGLES