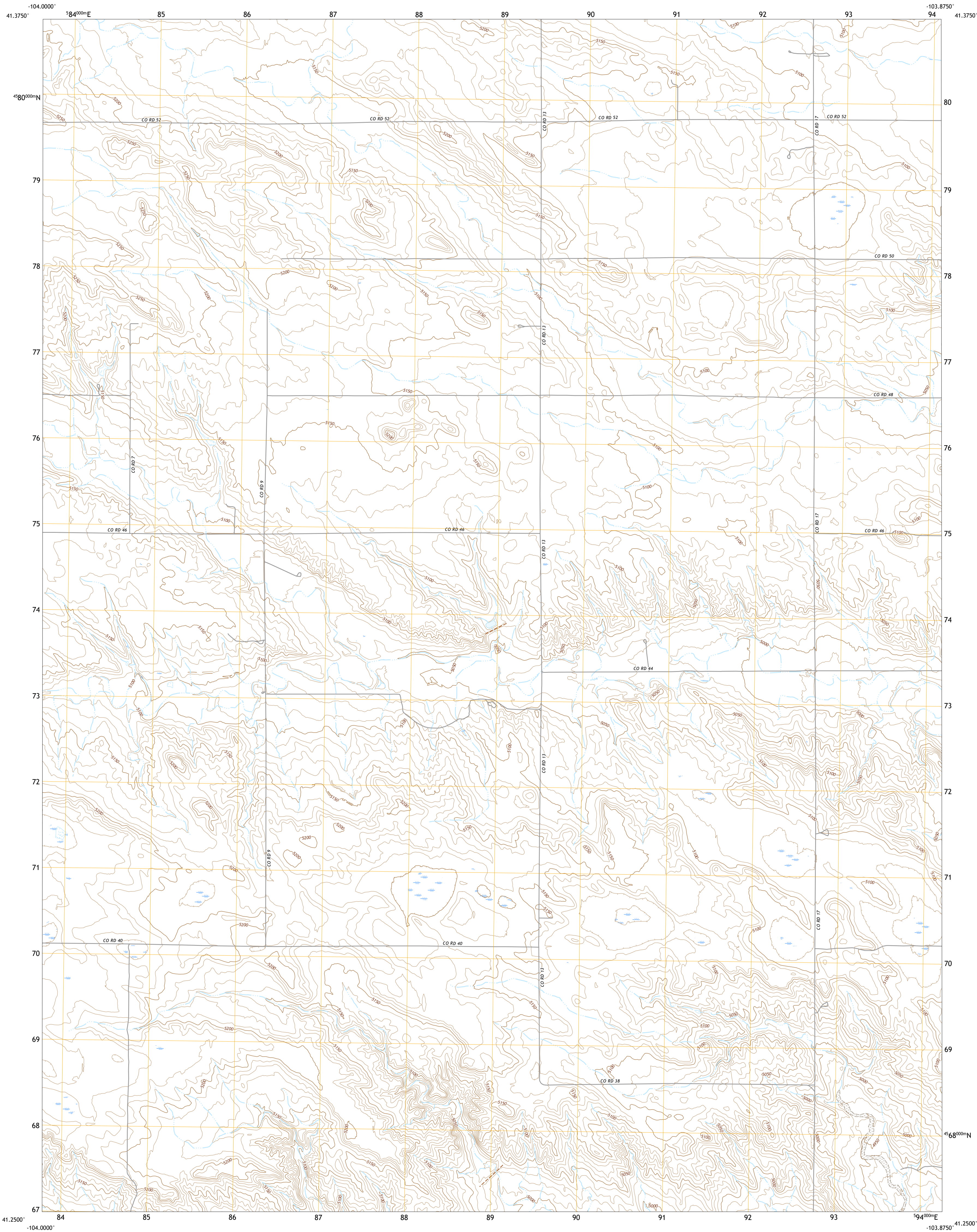




U.S. DEPARTMENT OF THE INTERIOR
U.S. GEOLOGICAL SURVEY



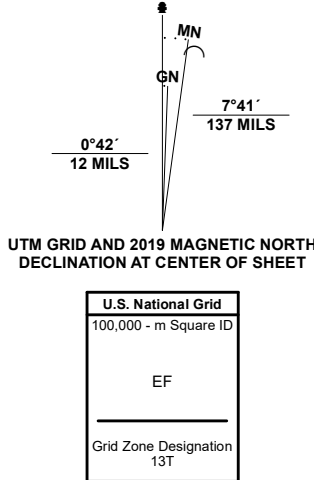
NORTH OF BUSHNELL QUADRANGLE
NEBRASKA - KIMBALL COUNTY
7.5-MINUTE SERIES



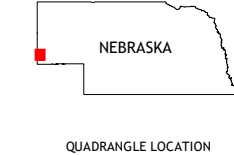
Produced by the United States Geological Survey

North American Datum of 1983 (NAD83)
World Geodetic System of 1984 (WGS84). Projection and
1 000-meter grid/Universal Transverse Mercator, Zone 13T
This map is not a legal document. Boundaries may be
generalized for this map scale. Private lands within government
reservations may not be shown. Obtain permission before
entering private lands.

Imagery.....NAIP, July 2020 - July 2020
Roads.....U.S. Census Bureau, 2015
Names.....GNIS, 1997
Hydrography.....National Hydrography Dataset, 2004 - 2020
Contours.....National Elevation Dataset, 2017
Boundaries.....Multiple sources; see metadata file 2018 - 2019
Public Land Survey System.....BLM, 2020
Wetlands.....FWS National Wetlands Inventory Not Available



CONTOUR INTERVAL 10 FEET
NORTH AMERICAN VERTICAL DATUM OF 1988
This map was produced to conform with the
National Geospatial Program US Topo Product Standard.



1	2	3
4	5	6
7	8	9

- 1 Albin
- 2 Head of Rocky Hollow
- 3 South of Gabe Rock
- 4 Lindbergh
- 5 North of Oliver Reservoir
- 6 Pine Bluffs
- 7 Bushnell
- 8 Oliver Reservoir

ROAD CLASSIFICATION

Expressway	Local Connector
Secondary Hwy	Local Road
Ramp	4WD
Interstate Route	US Route
	State Route

NORTH OF BUSHNELL, NE
2021

