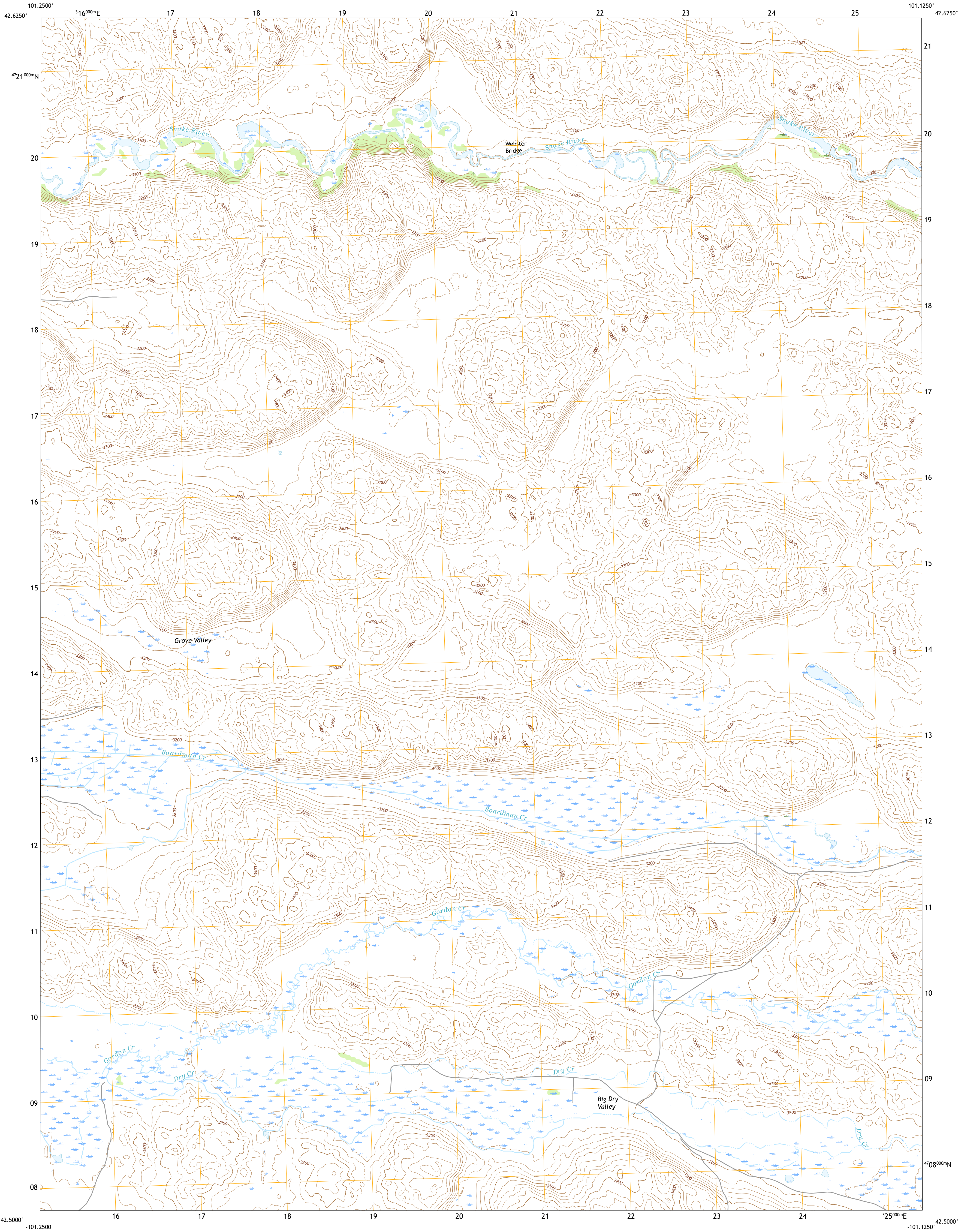




U.S. DEPARTMENT OF THE INTERIOR  
U.S. GEOLOGICAL SURVEY



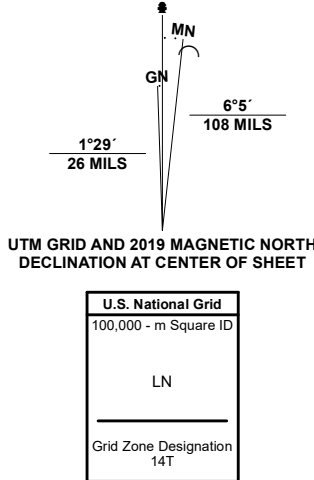
POWDERHORN VALLEY SW QUADRANGLE  
NEBRASKA - CHERRY COUNTY  
7.5-MINUTE SERIES



Produced by the United States Geological Survey

North American Datum of 1983 (NAD83)  
World Geodetic System of 1984 (WGS84). Projection and  
1 000-meter grid/Universal Transverse Mercator, Zone 14T.  
This map is not a legal document. Boundaries may be  
generalized for this map scale. Private lands within government  
reservations may not be shown. Obtain permission before  
entering private lands.

Imagery.....NAIP, July 2020 - July 2020  
Roads.....U.S. Census Bureau, 2015  
Names.....GNIS, 1979  
Hydrography.....National Hydrography Dataset, 2004 - 2019  
Contours.....National Elevation Dataset, 2002  
Boundaries.....Multiple sources; see metadata file 2018 - 2019  
Public Land Survey System.....BLM, 2020  
Wetlands.....FWS National Wetlands Inventory Not Available



CONTOUR INTERVAL 20 FEET  
NORTH AMERICAN VERTICAL DATUM OF 1988  
This map was produced to conform with the  
National Geospatial Program US Topo Product Standard.



QUADRANGLE LOCATION

1	2	3
4	5	6
7	8	9

- 1 Heath Valley
- 2 Spring Lake
- 3 Powderhorn Valley
- 4 Farm Flat
- 5 Chesterfield Flats
- 6 Rosebud Flats
- 7 Big Falls
- 8 Brush Hill

ROAD CLASSIFICATION		
Expressway	Local Connector	
Secondary Hwy	Local Road	
Ramp	4WD	
Interstate Route	US Route	State Route

POWDERHORN VALLEY SW, NE

2021

