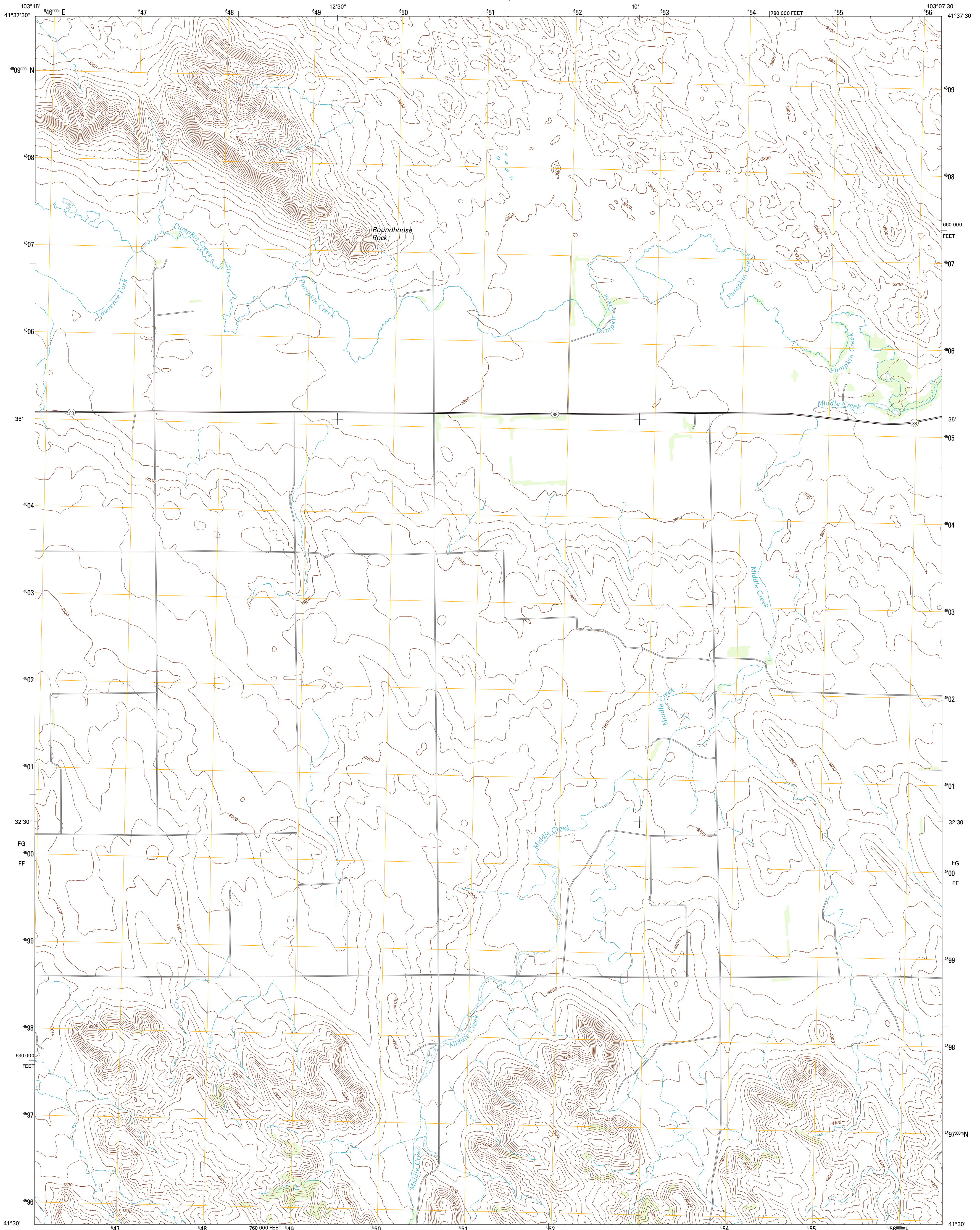




U.S. DEPARTMENT OF THE INTERIOR
U. S. GEOLOGICAL SURVEY

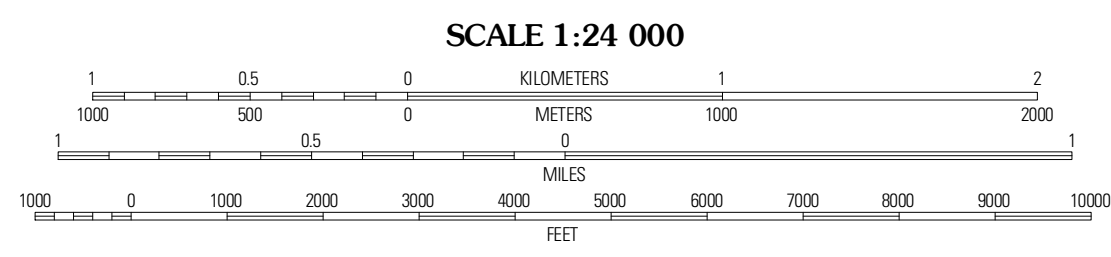
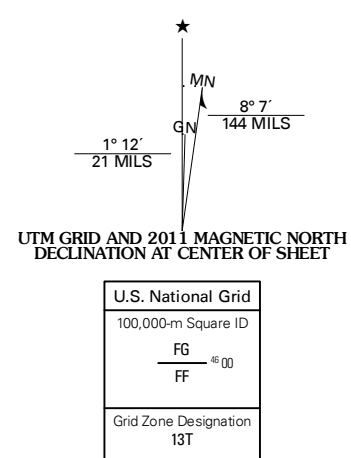


ROUNDHOUSE ROCK QUADRANGLE
NEBRASKA-MORRILL CO.
7.5-MINUTE SERIES

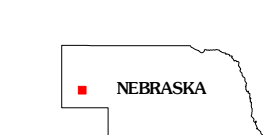


Produced by the United States Geological Survey
North American Datum of 1983 (NAD83)
World Geodetic System of 1984 (WGS84). Projection and
1 000-meter grid: Universal Transverse Mercator, Zone 13T
10 000-foot ticks: Nebraska Coordinate System of 1983

Imagery.....N.A.P., June 2010
Roads.....©2006-2011 TomTom
Names.....©2006-2011 TomTom
Hydrography.....National Hydrography Dataset, 2009
Contours.....National Elevation Dataset, 2002
Boundaries.....Census, IBWC, IBC, USGS, 1972 - 2010



CONTOUR INTERVAL 20 FEET
NORTH AMERICAN VERTICAL DATUM OF 1988
This map was produced to conform with the
National Geospatial Program US Topo Product Standard, 2011.
A metadata file associated with this product is draft version 0.6.1



ROAD CLASSIFICATION
Interstate Route (thick red line)
US Route (red line)
Ramp (red line with blue triangle)
State Route (grey line)
Local Road (grey line)
4WD (dashed grey line)

QUADRANGLE LOCATION

South Bayard	Bridgport NW	Bridgport
Redington	Roundhouse Rock	Courthouse Rock
Lawrence Fork	Horseshoe Ranch	Mud Springs

ADJOINING 7.5' QUADRANGLES

ROUNDHOUSE ROCK, NE
2011