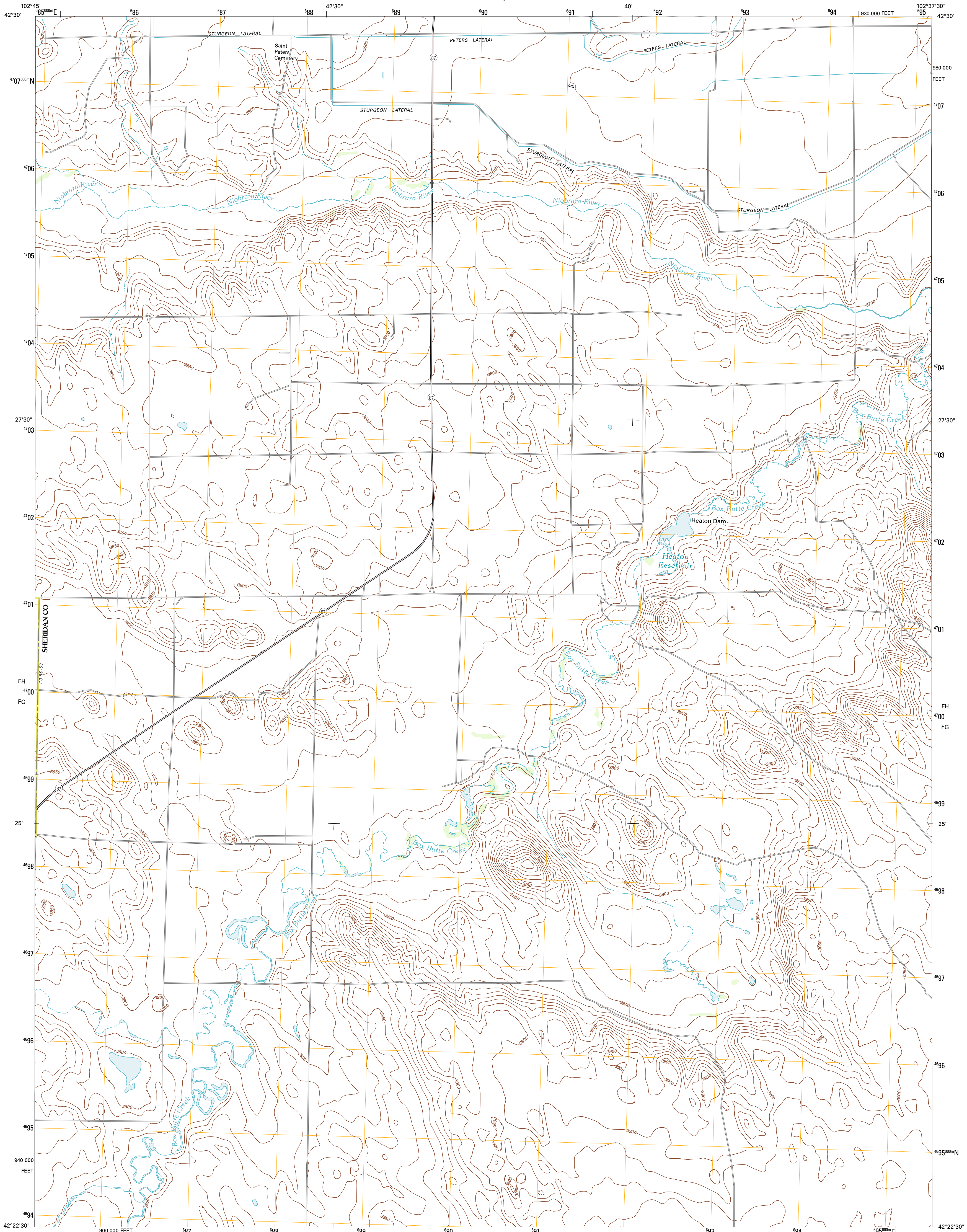




U.S. DEPARTMENT OF THE INTERIOR
U. S. GEOLOGICAL SURVEY

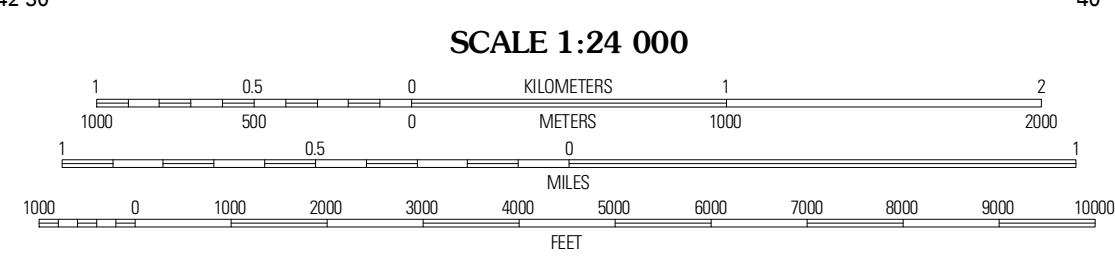
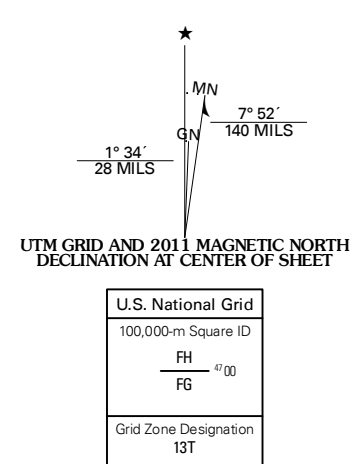


SKUNK LAKE NW QUADRANGLE
NEBRASKA
7.5-MINUTE SERIES

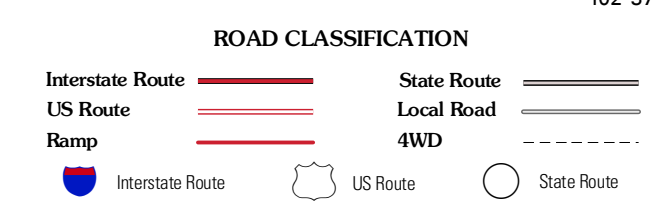


Produced by the United States Geological Survey
North American Datum of 1983 (NAD83)
World Geodetic System of 1984 (WGS84). Projection and
1 000-meter grid: Universal Transverse Mercator, Zone 13T
10 000-foot ticks: Nebraska Coordinate System of 1983

Imagery.....NAIP, June 2010
Roads.....©2006-2011 TomTom
Names.....GNSS, 2011
Hydrography.....National Hydrography Dataset, 2009
Contours.....National Elevation Dataset, 2002
Boundaries.....Census, IBWC, IBC, USGS, 1972 - 2010



CONTOUR INTERVAL 10 FEET
NORTH AMERICAN VERTICAL DATUM OF 1988
This map was produced to conform with the
National Geospatial Program US Topo Product Standard, 2011.
A metadata file associated with this product is draft version 0.6.1



QUADRANGLE LOCATION

Send Canyon East	Hay Springs SW	Hay Springs SE
Box Butte NE	Skunk Lake NW	Skunk Lake NE
Box Butte	Skunk Lake SW	Skunk Lake

ADJOINING 7.5 QUADRANGLES

SKUNK LAKE NW, NE
2011