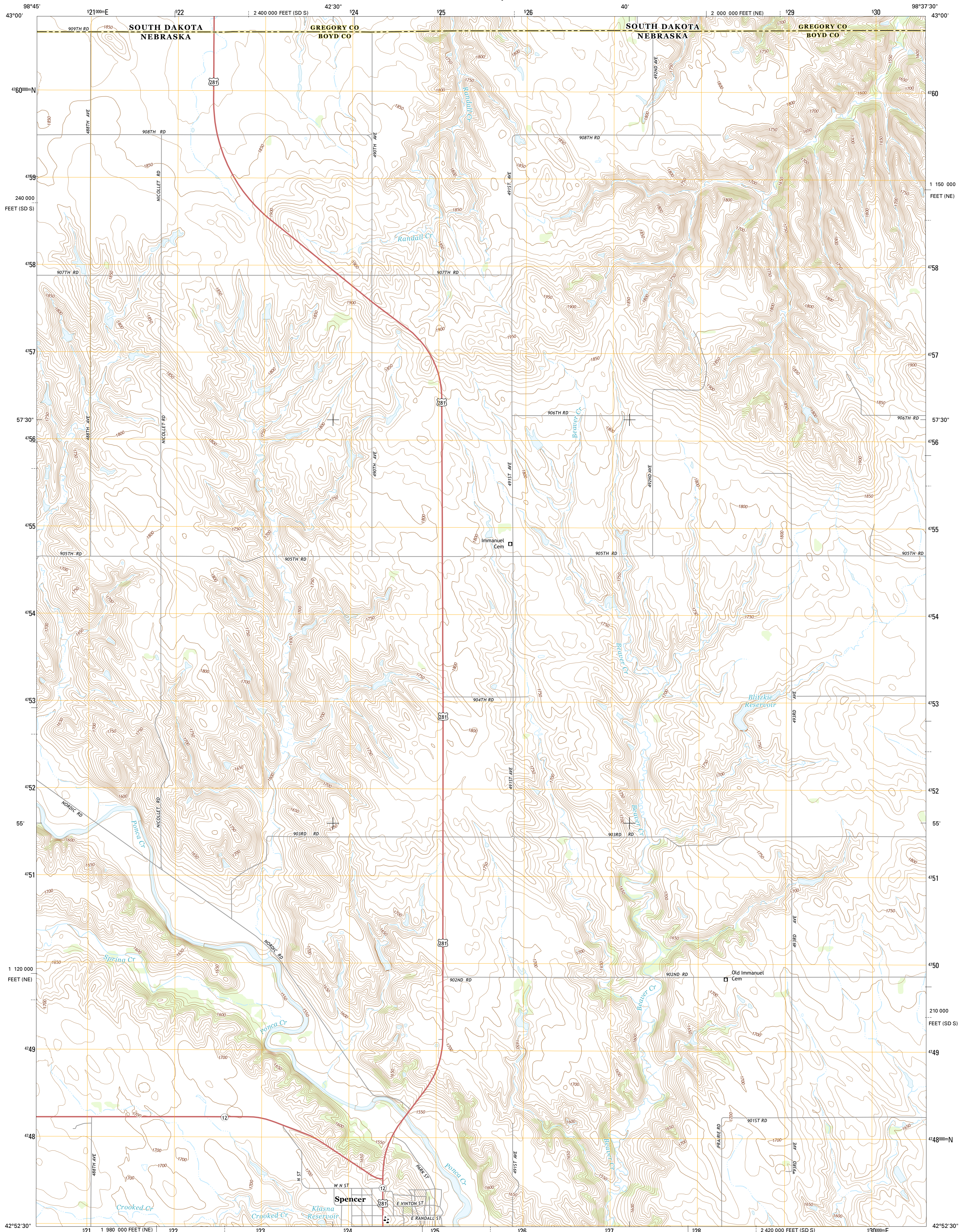




U.S. DEPARTMENT OF THE INTERIOR
U.S. GEOLOGICAL SURVEY



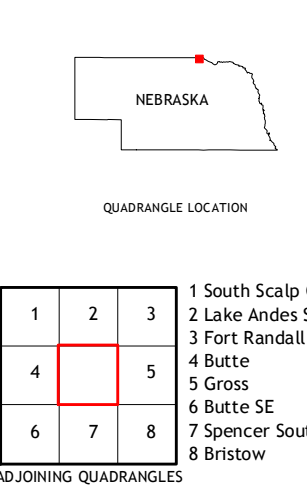
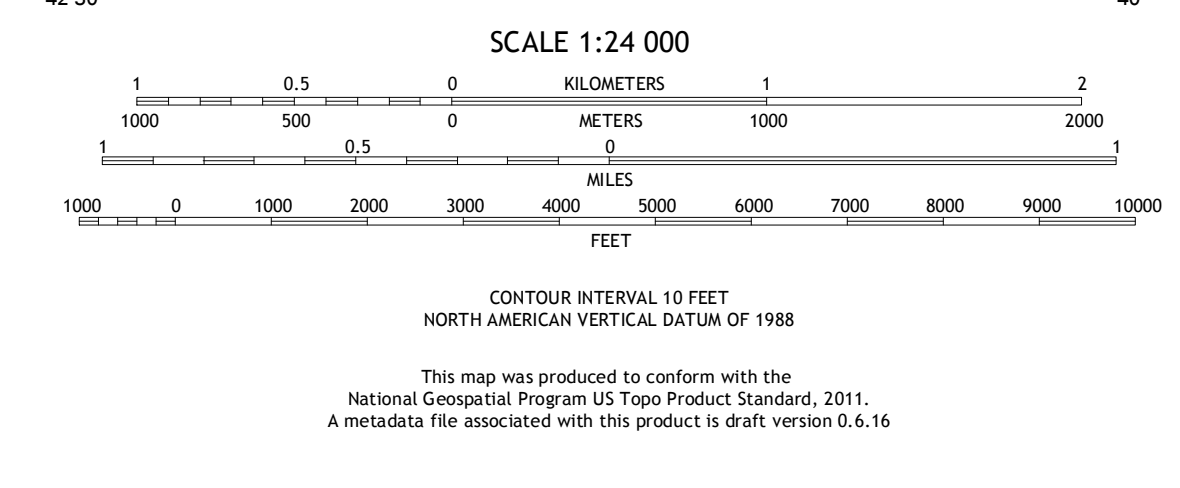
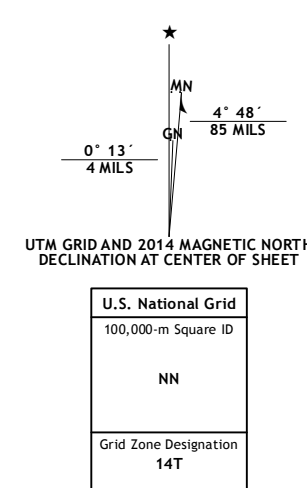
SPENCER NORTH QUADRANGLE
NEBRASKA-SOUTH DAKOTA
7.5-MINUTE SERIES



Produced by the United States Geological Survey
 North American Datum of 1983 (NAD83)
 World Geodetic System of 1984 (WGS84), Projection and
 1 000-meter grid: Universal Transverse Mercator, Zone 14T
 10 000-foot ticks: Nebraska Coordinate System of 1983, South
 Dakota Coordinate System of 1983 (south zone)

This map is not a legal document. Boundaries may be
 generalized for this map scale. Private lands within government
 reservations may not be shown. Obtain permission before
 entering private lands.

Imagery.....N.A.P., July 2012
 Roads.....HERE, ©2013
 Names.....GNIS, 2013
 Hydrography.....National Hydrography Dataset, 2012
 Contours.....National Elevation Dataset, 2003
 Boundaries.....Multiple sources; see metadata file 1972 - 2014



1	2	3
4	5	6
7	8	

1 South Scalp Creek
 2 Lake Andes SW
 3 Fort Randal Dam
 4 Butte
 5 Gross
 6 Butte SE
 7 Spencer South
 8 Bristow

ADJOINING QUADRANGLES

SPENCER NORTH, NE-SD
 2014

