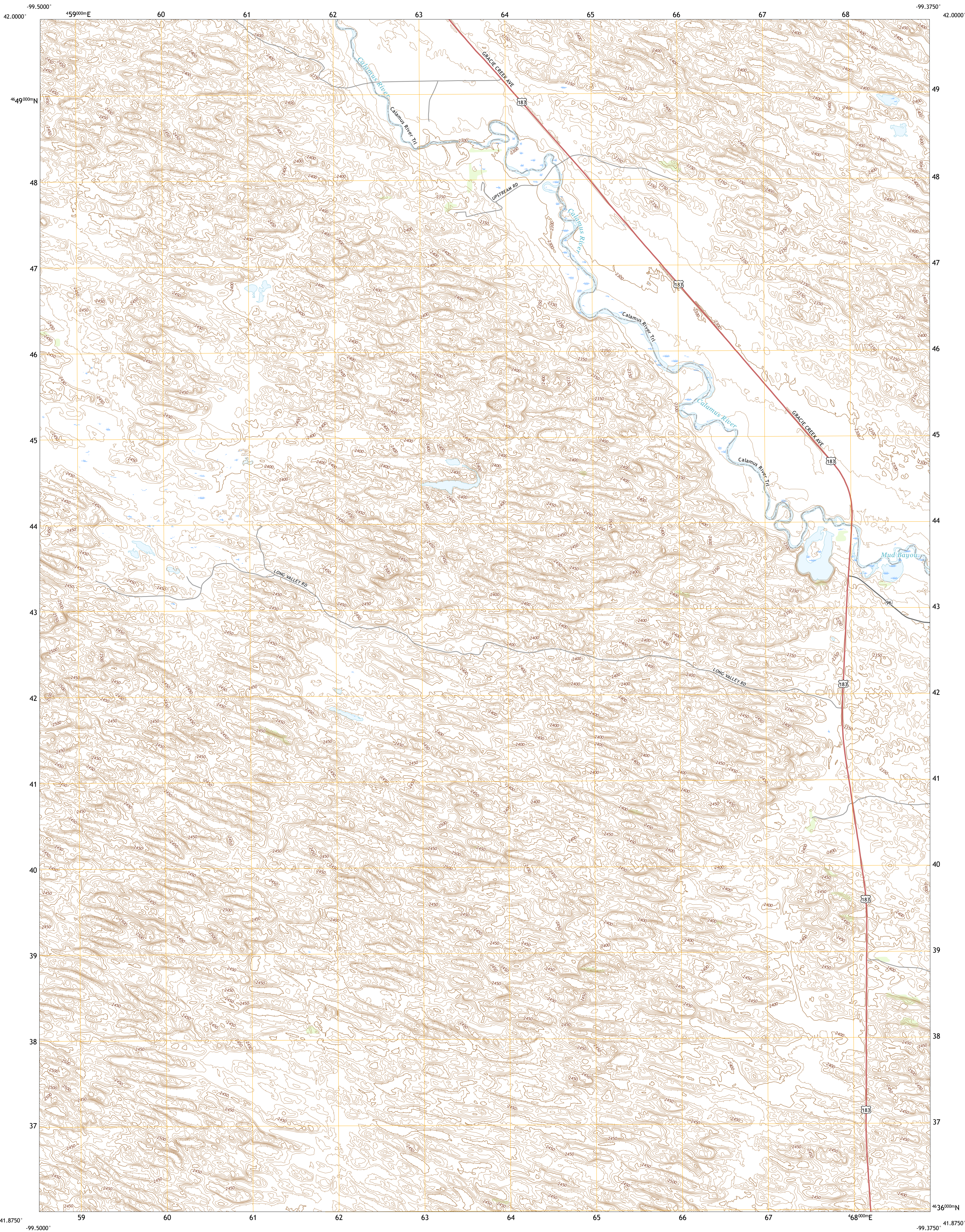




U.S. DEPARTMENT OF THE INTERIOR
U.S. GEOLOGICAL SURVEY

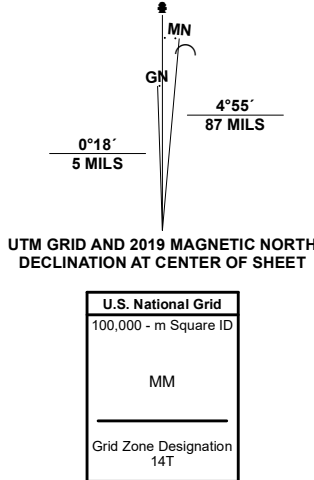


TAYLOR NW QUADRANGLE
NEBRASKA - LOUP COUNTY
7.5-MINUTE SERIES



Produced by the United States Geological Survey

North American Datum of 1983 (NAD83)
World Geodetic System of 1984 (WGS84), Projection and
1 000-meter grid/Universal Transverse Mercator, Zone 14T
This map is not a legal document. Boundaries may be
generalized for this map scale. Private lands within government
reservations may not be shown. Obtain permission before
entering private lands.
Imagery.....NAIP, August 2020 - August 2020
Roads.....U.S. Census Bureau, 2015
Names.....GNIS, 1999 - 2009
Hydrography.....National Hydrography Dataset, 2006 - 2019
Contours.....National Elevation Dataset, 2018
Boundaries.....Multiple sources: see metadata file, 2018 - 2019
Public Land Survey System.....BLM, 2020
Wetlands.....FWS National Wetlands Inventory Not Available



CONTOUR INTERVAL 10 FEET
NORTH AMERICAN VERTICAL DATUM OF 1988
This map was produced to conform with the
National Geospatial Program US Topo Product Standard.



QUADRANGLE LOCATION

1	2	3
4	5	6
7	8	9

1 Shovel Dot Ranch
2 Stonehouse Ranch SW
3 Stonehouse Ranch
4 Almeria NE
5 Taylor NE
6 Almeria
7 Taylor
8 Taylor SE

ROAD CLASSIFICATION	
Expressway	Local Connector
Secondary Hwy	Local Road
Ramp	4WD
Interstate Route	US Route
	State Route

TAYLOR NW, NE
2021

