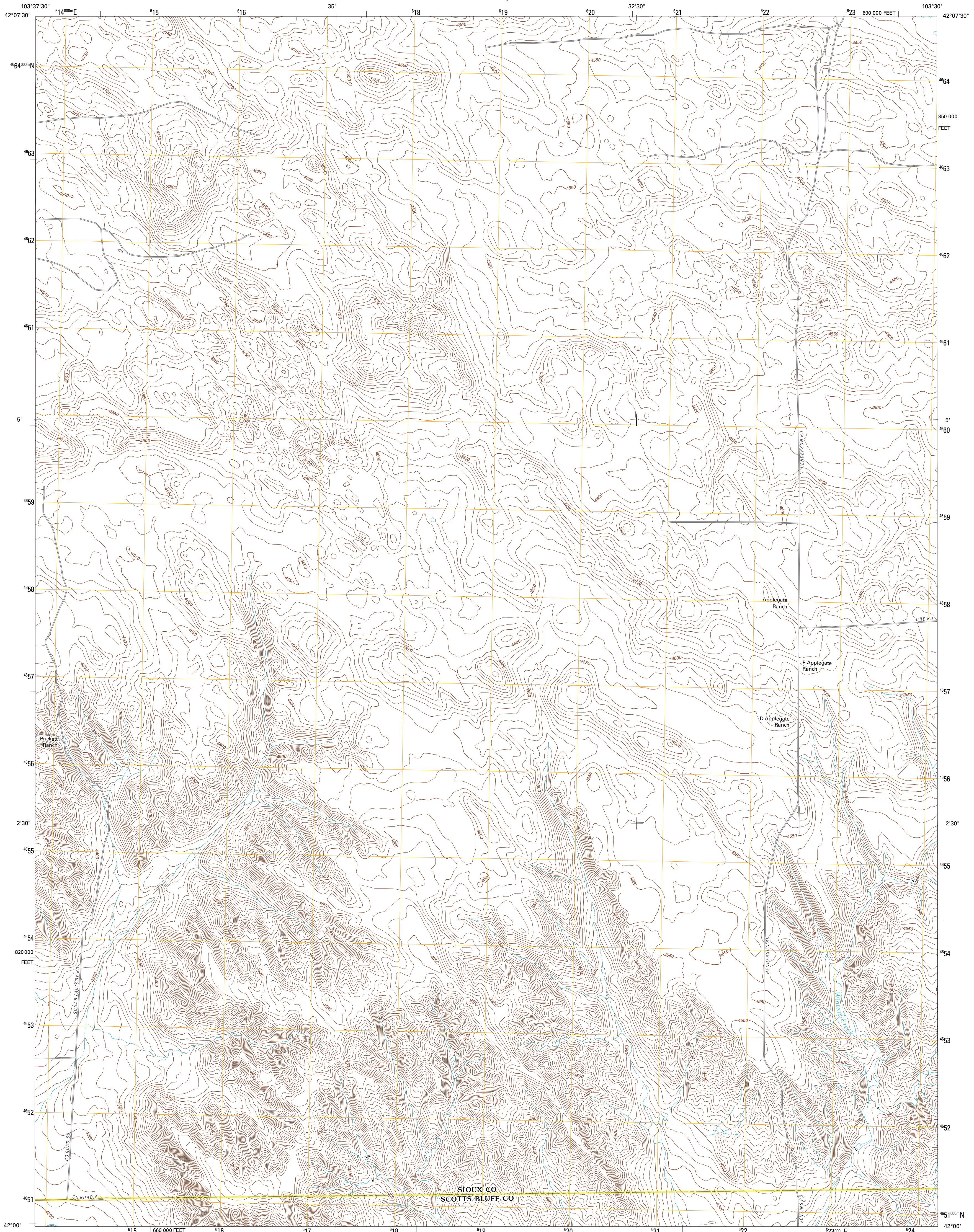




U.S. DEPARTMENT OF THE INTERIOR
U. S. GEOLOGICAL SURVEY

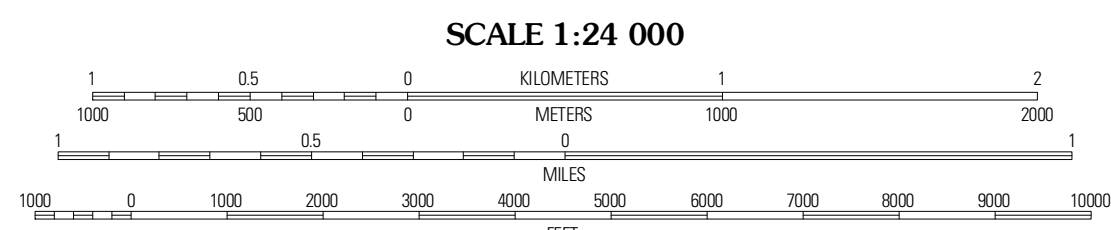
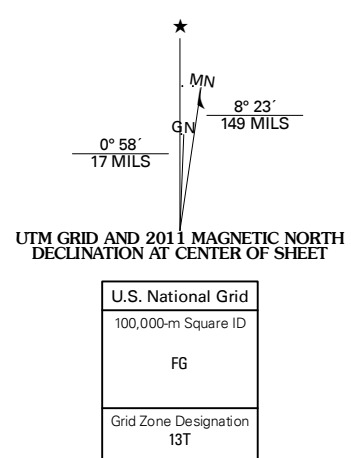


UNIVERSITY LAKE SE QUADRANGLE
NEBRASKA
7.5-MINUTE SERIES



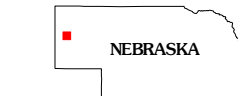
Produced by the United States Geological Survey
North American Datum of 1983 (NAD83)
World Geodetic System of 1984 (WGS84). Projection and
1 000-meter grid: Universal Transverse Mercator, Zone 13T
10 000-foot ticks: Nebraska Coordinate System of 1983

Imagery.....NAIP, June 2010
Roads.....©2006-2011 TomTom
Names.....GNS, 2011
Hydrography.....National Hydrography Dataset, 2009
Contours.....National Elevation Dataset, 2002
Boundaries.....Census, IBWC, IBC, USGS, 1972 - 2010



CONTOUR INTERVAL 10 FEET
NORTH AMERICAN VERTICAL DATUM OF 1988

This map was produced to conform with the
National Geospatial Program US Topo Product Standard, 2011.
A metadata file associated with this product is draft version 0.6.1

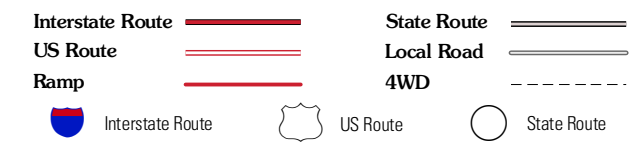


NEBRASKA

QUADRANGLE LOCATION

University Lake NW	University Lake NE	Kilpatrick Lake NW
University Lake	University Lake SE	Kilpatrick Lake SW
Scottsbluff North	Lake Alice	Lake Minatare

ROAD CLASSIFICATION



UNIVERSITY LAKE SE, NE
2011

ADJOINING 7.5' QUADRANGLES