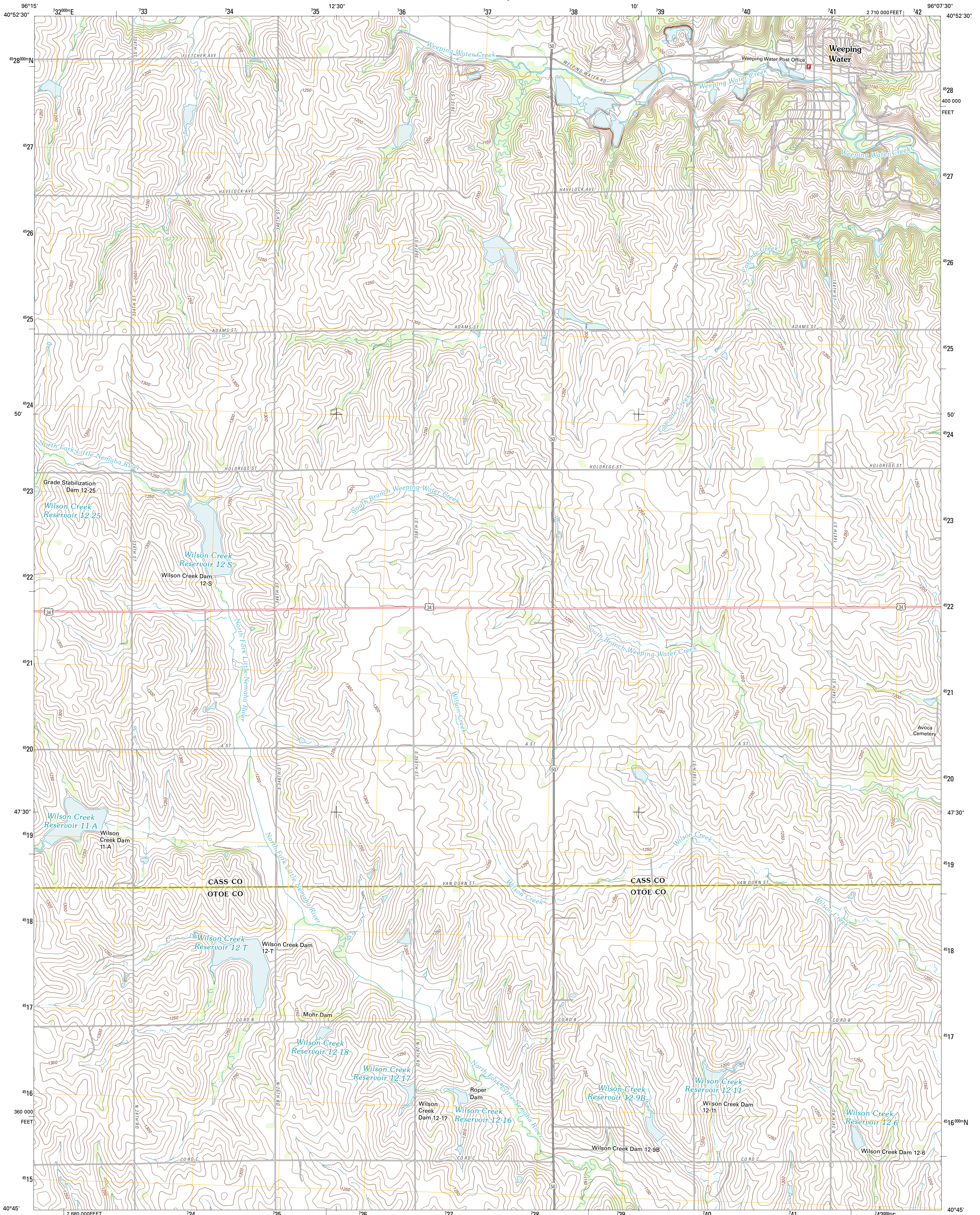




U.S. DEPARTMENT OF THE INTERIOR  
U. S. GEOLOGICAL SURVEY



WEeping WATER QUADRANGLE  
NEBRASKA  
7.5-MINUTE SERIES



Produced by the United States Geological Survey  
North American Datum of 1983 (NAD83)  
World Geodetic System of 1984 (WGS84). Projection and  
1 000-meter grid: Universal Transverse Mercator, Zone 14T  
10 000-foot ticks: Nebraska Coordinate System of 1983

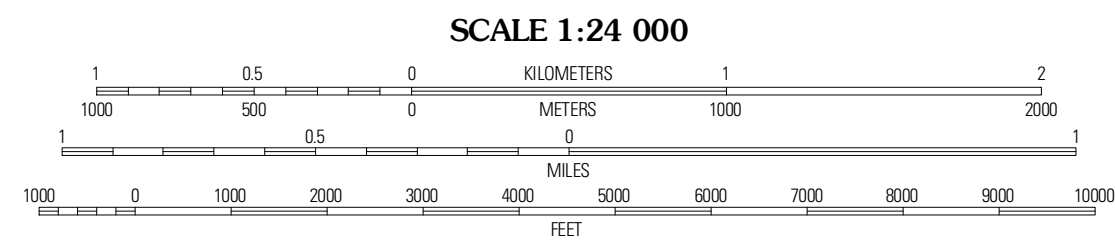
Imagery.....NAP, July 2010  
Roads.....©2006-2011 TomTom  
Names.....GNIS, 2011  
Hydrography.....National Hydrography Dataset, 2010  
Contours.....National Elevation Dataset, 2001  
Boundaries.....Census, IBWC, IBC, USGS, 1972 - 2010

UTM GRID AND 2011 MAGNETIC NORTH  
DECLINATION AT CENTER OF SHEET

MN  
1 32' 26"  
GN  
81 MILLS

U.S. National Grid  
100,000m Square ID  
QL

Grid Zone Designation  
14T



CONTOUR INTERVAL 10 FEET  
NORTH AMERICAN VERTICAL DATUM OF 1988

This map was produced to conform with the  
National Geospatial Program US Topo Product Standard, 2011.  
A metadata file associated with this product is draft version 0.6.1



QUADRANGLE LOCATION

Murdock	Munley	Weeping Water NE
Elmwood	Weeping Water	Avoca
Uadilla	Syncrude	Dunbar

ADJOINING 7.5 QUADRANGLES

ROAD CLASSIFICATION

Interstate Route

US Route

Ramp

State Route

Local Road

4WD

Interstate Route

US Route

State Route

WEeping WATER, NE  
2011