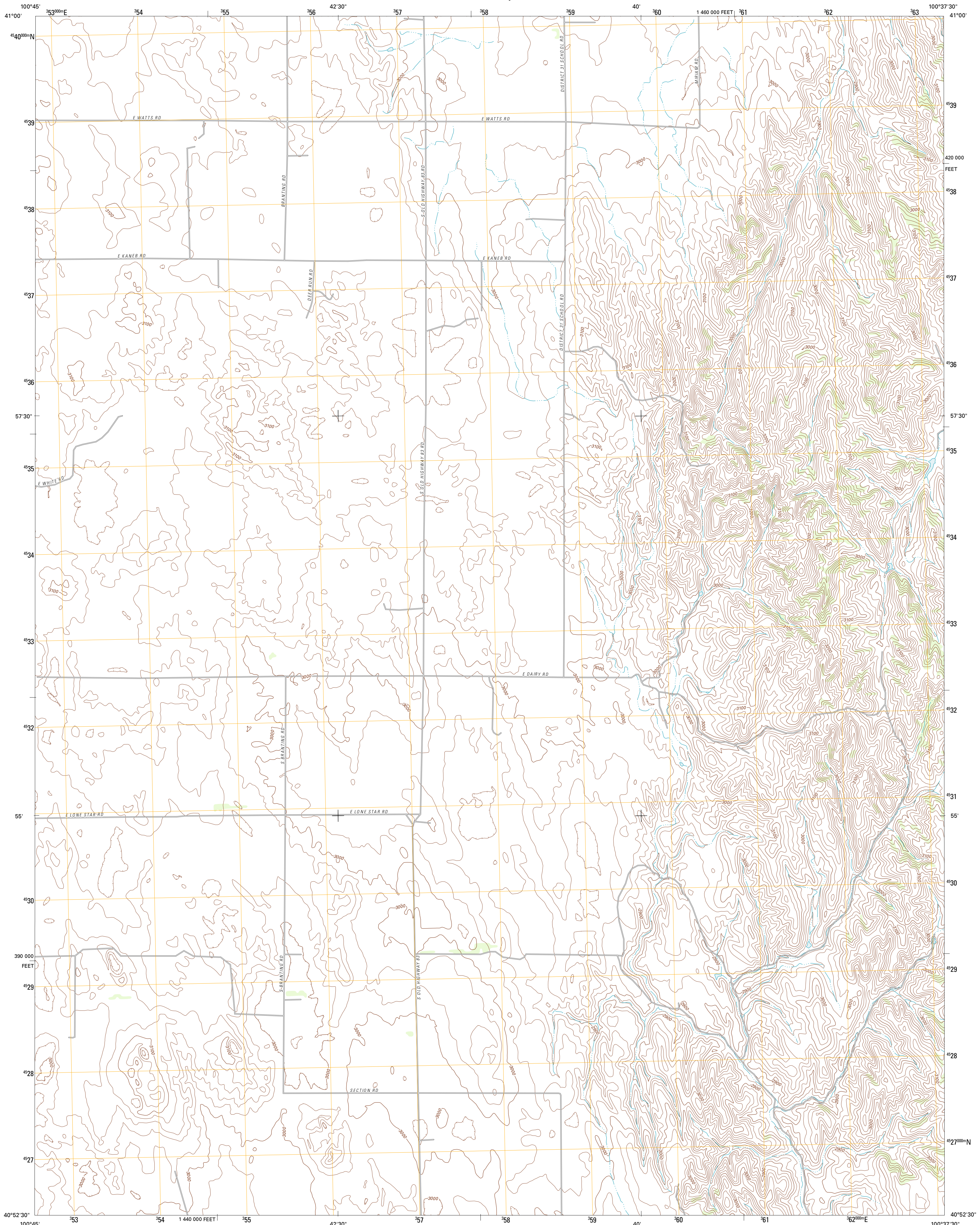




U.S. DEPARTMENT OF THE INTERIOR  
U. S. GEOLOGICAL SURVEY



WELLFLEET NW QUADRANGLE  
NEBRASKA-LINCOLN CO.  
7.5-MINUTE SERIES



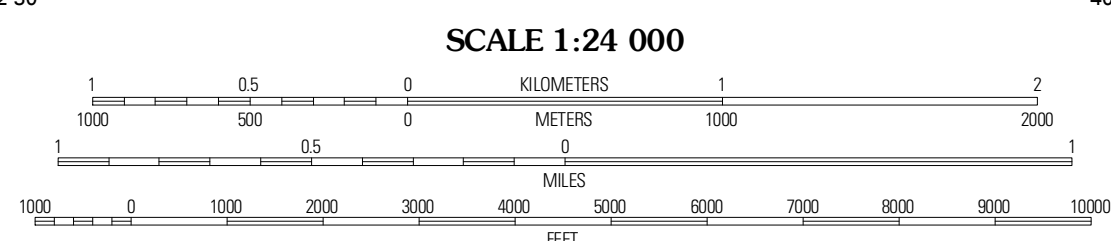
Produced by the United States Geological Survey  
North American Datum of 1983 (NAD83)  
World Geodetic System of 1984 (WGS84) Projection and  
1 000-meter grid; Universal Transverse Mercator, Zone 14T  
10 000-foot ticks; Nebraska Coordinate System of 1983

Imagery.....NAP, June 2010  
Roads.....©2006-2011 TomTom  
Names.....GNIS, 2011  
Hydrography.....National Hydrography Dataset, 2009  
Contours.....National Elevation Dataset, 2001  
Boundaries.....Census, IBWC, IBC, USGS, 1972 - 2010

UTM GRID AND 2011 MAGNETIC NORTH DECLINATION AT CENTER OF SHEET

|   |
|---|
| U.S. National Grid<br>300,000-m Square ID |
| LL  |
| Grid Zone Designation<br>14T              |

MN  
GN  
11° 22'  
20 MILS



CONTOUR INTERVAL 20 FEET  
NORTH AMERICAN VERTICAL DATUM OF 1988

This map was produced to conform with the  
National Geospatial Program US Topo Product Standard, 2011.  
A metadata file associated with this product is draft version 0.6.1



QUADRANGLE LOCATION

|              |              |              |
|--------------|--------------|--------------|
| Lake Maloney | Maxwell SW   | Maxwell      |
| Dickers NE   | Wellfleet NW | Wellfleet NE |
| Somerset     | Wellfleet    | Wellfleet SE |

ROAD CLASSIFICATION

|                  |             |
|------------------|-------------|
| Interstate Route | State Route |
| US Route         | Local Road  |
| Ramp             | 4WD         |

Interstate Route  
US Route  
State Route

WELLFLEET NW, NE  
2011

ADJOINING 7.5' QUADRANGLES