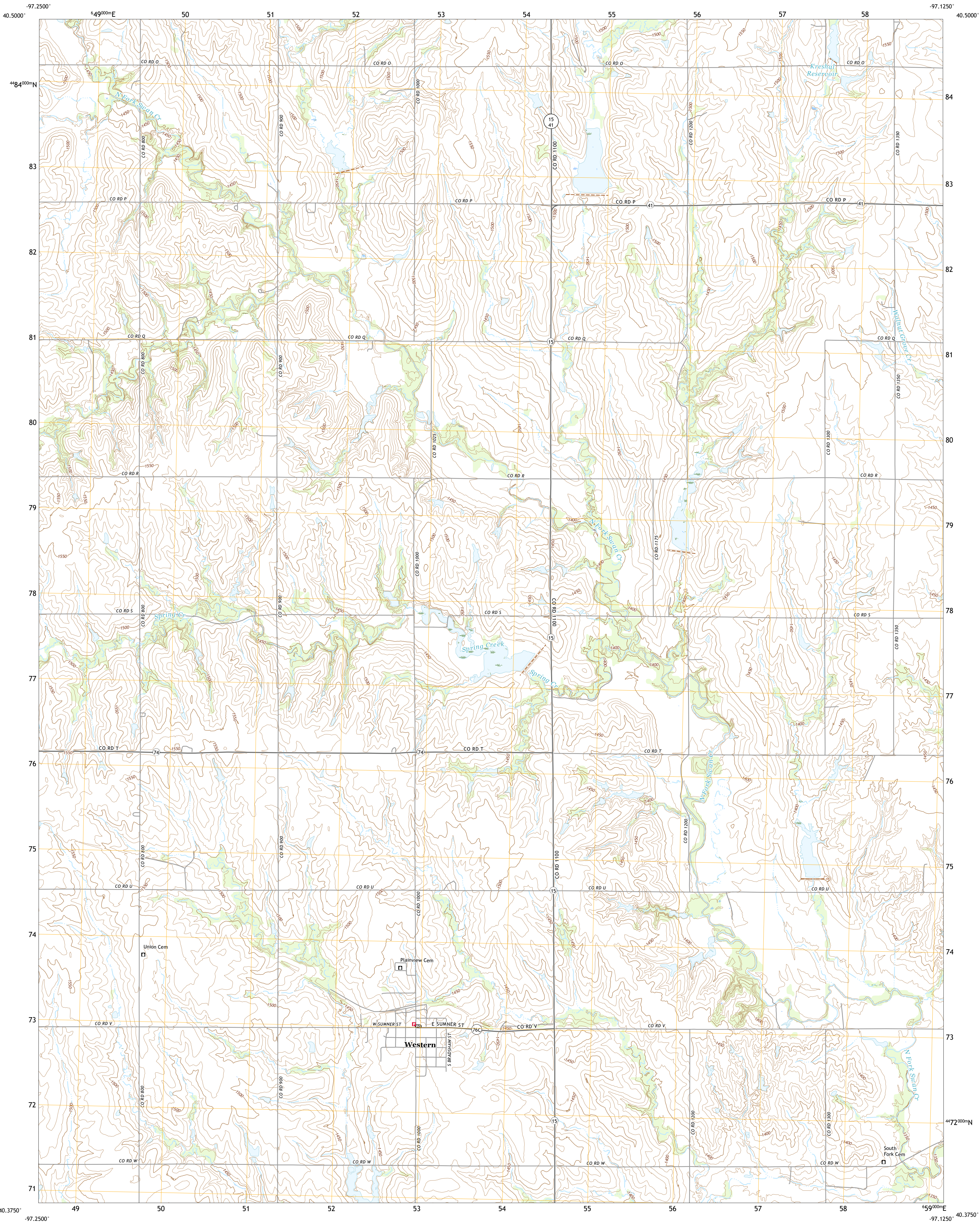




U.S. DEPARTMENT OF THE INTERIOR
U.S. GEOLOGICAL SURVEY

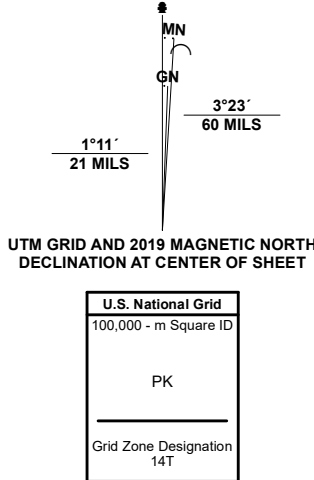


WESTERN QUADRANGLE
NEBRASKA - SALINE COUNTY
7.5-MINUTE SERIES



Produced by the United States Geological Survey

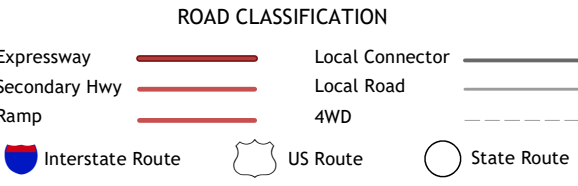
North American Datum of 1983 (NAD83)
World Geodetic System of 1984 (WGS84). Projection and
1 000-meter grid/Universal Transverse Mercator, Zone 14T
This map is not a legal document. Boundaries may be
generalized for this map scale. Private lands within government
reservations may not be shown. Obtain permission before
entering private lands.
Imagery.....NAIP, July 2020 - July 2020
Roads.....U.S. Census Bureau, 2015
Names.....GNIS, 1979 - 2020
Hydrography.....National Hydrography Dataset, 2003 - 2018
Contours.....National Elevation Dataset, 2011
Boundaries.....Multiple sources: see metadata file, 2018 - 2020
Public Land Survey System.....BLM, 2020
Wetlands.....FWS National Wetlands Inventory Not Available



QUADRANGLE LOCATION

1	2	3
4	5	6
7	8	9

1 Friend SE
2 Dorchester SW
3 Pleasant Hill
4 Tablos
5 Swanton
6 Daykin
7 Western SW
8 Western SE



WESTERN, NE
2021

