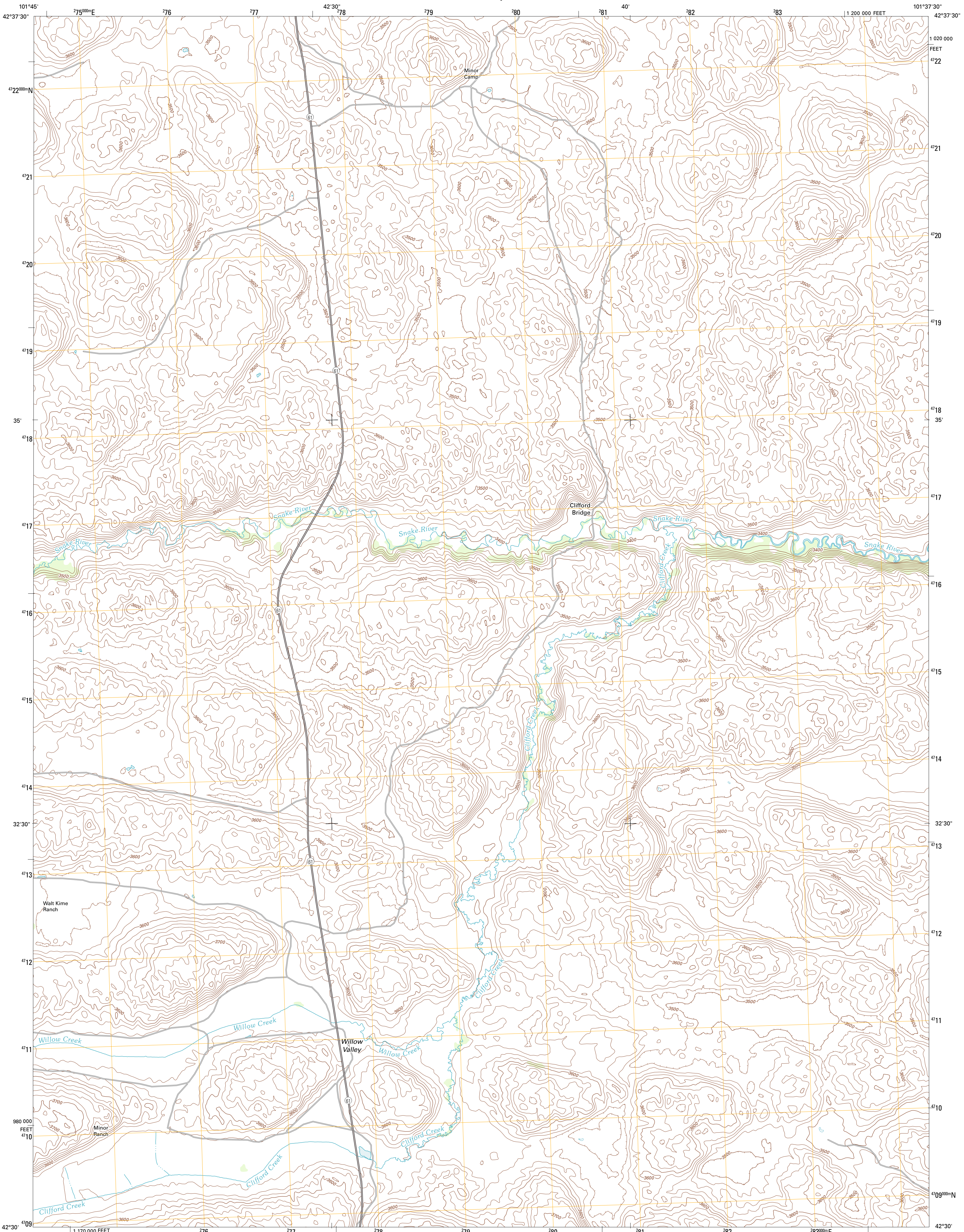




U.S. DEPARTMENT OF THE INTERIOR  
U. S. GEOLOGICAL SURVEY

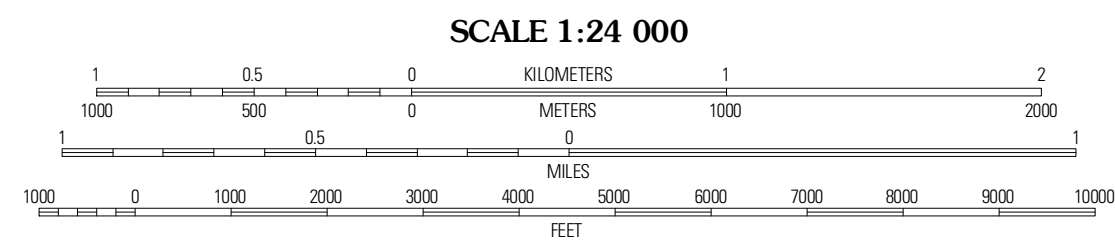
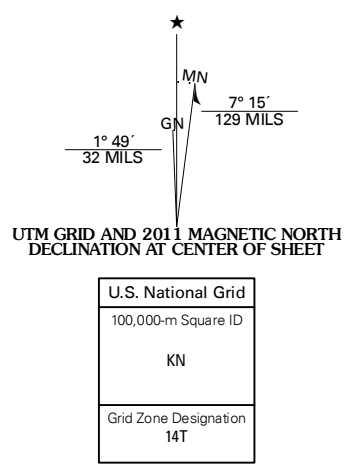


WILD MARE LAKE SW QUADRANGLE  
NEBRASKA-CHERRY CO.  
7.5-MINUTE SERIES



Produced by the United States Geological Survey  
North American Datum of 1983 (NAD83)  
World Geodetic System of 1984 (WGS84). Projection and  
1 000-meter grid: Universal Transverse Mercator, Zone 14T  
10 000-foot ticks: Nebraska Coordinate System of 1983

Imagery.....NAIP, July 2010  
Roads.....©2006-2011 TomTom  
Names.....GNS, 2011  
Hydrography.....National Hydrography Dataset, 2009  
Contours.....National Elevation Dataset, 2002  
Boundaries.....Census, IBWC, IBC, USGS, 1972 - 2010



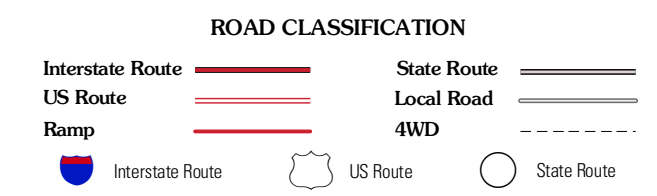
CONTOUR INTERVAL 20 FEET  
NORTH AMERICAN VERTICAL DATUM OF 1988  
This map was produced to conform with the  
National Geospatial Program US Topo Product Standard, 2011.  
A metadata file associated with this product is draft version 0.6.1



QUADRANGLE LOCATION

Bornemann Lake	Wild Mare Lake NW	Wild Mare Lake
North Valley	Wild Mare Lake SW	Wild Mare Lake SE
Turnin Lake East	Steverson Lake	Round Lake

ADJOINING 7.5 QUADRANGLES



WILD MARE LAKE SW, NE  
2011