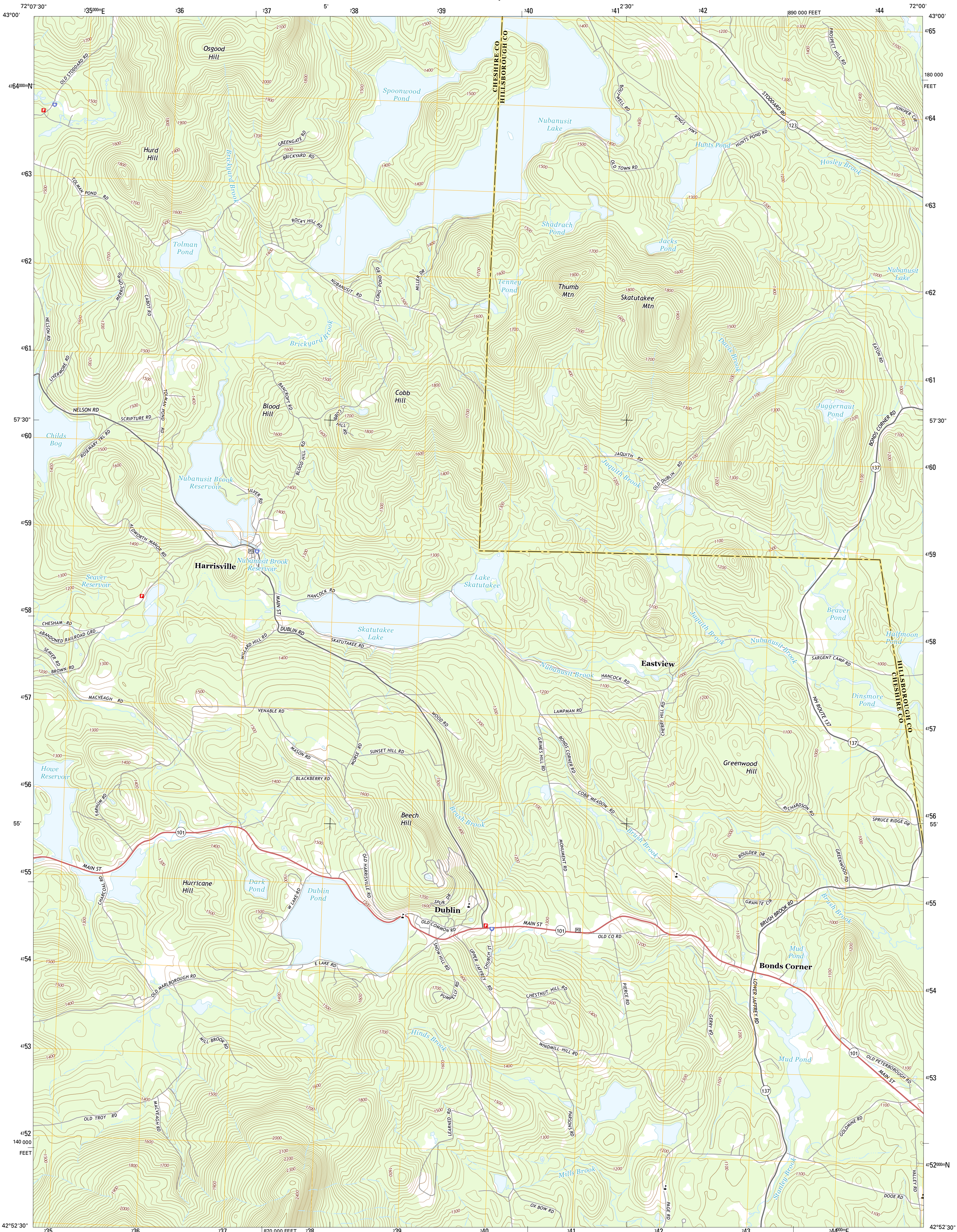




U.S. DEPARTMENT OF THE INTERIOR
U.S. GEOLOGICAL SURVEY



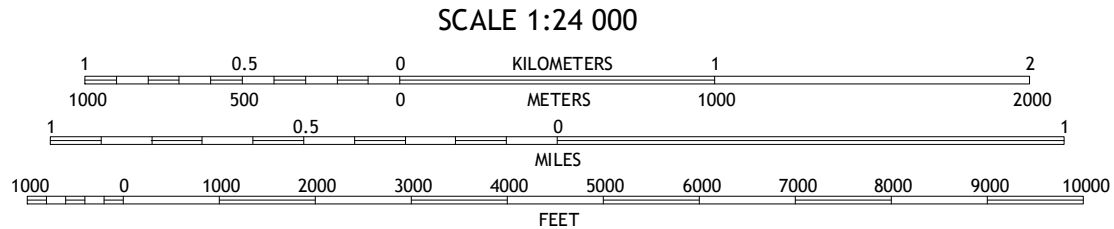
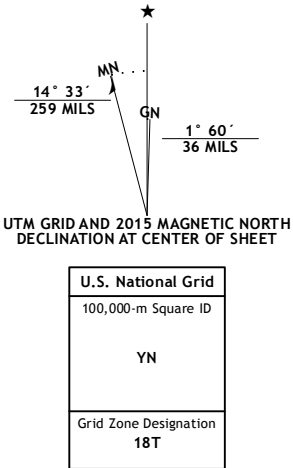
DUBLIN QUADRANGLE
NEW HAMPSHIRE
7.5-MINUTE SERIES



Produced by the United States Geological Survey
North American Datum of 1983 (NAD83)
World Geodetic System of 1984 (WGS84). Projection and
1 000-meter grid: Universal Transverse Mercator, Zone 18T
10 000-foot ticks: New Hampshire Coordinate System of 1983

This map is not a legal document. Boundaries may be
generalized for this map scale. Private lands within government
reservations may not be shown. Obtain permission before
entering private lands.

Imagery.....N.A.P. July 2012
Roads.....HERE, ©2013 - 2014
Names.....GNIS, 2015
Hydrography.....National Hydrography Dataset, 2012
Contours.....Not Available
Boundaries.....Multiple sources; see metadata file 1972 - 2015



CONTOURS NOT PRESENT BECAUSE AVAILABLE ELEVATION
DATA DO NOT MEET ACCURACY REQUIREMENTS

This map was produced to conform with the
National Geospatial Program US Topo Product Standard, 2011.
A metadata file associated with this product is draft version 0.6.18



ROAD CLASSIFICATION			
Expressway	Local Connector	Local Road	
Secondary Hwy	4WD		
Ramp	Interstate Route	US Route	State Route

1	2	3
4	5	
6	7	8

ADJOINING QUADRANGLES

1 Marlow
2 Stoddard
3 Hillsboro
4 Marlborough
5 Peterborough North
6 Troy
7 Menadock Mountain
8 Peterborough South

DUBLIN, NH
2015

