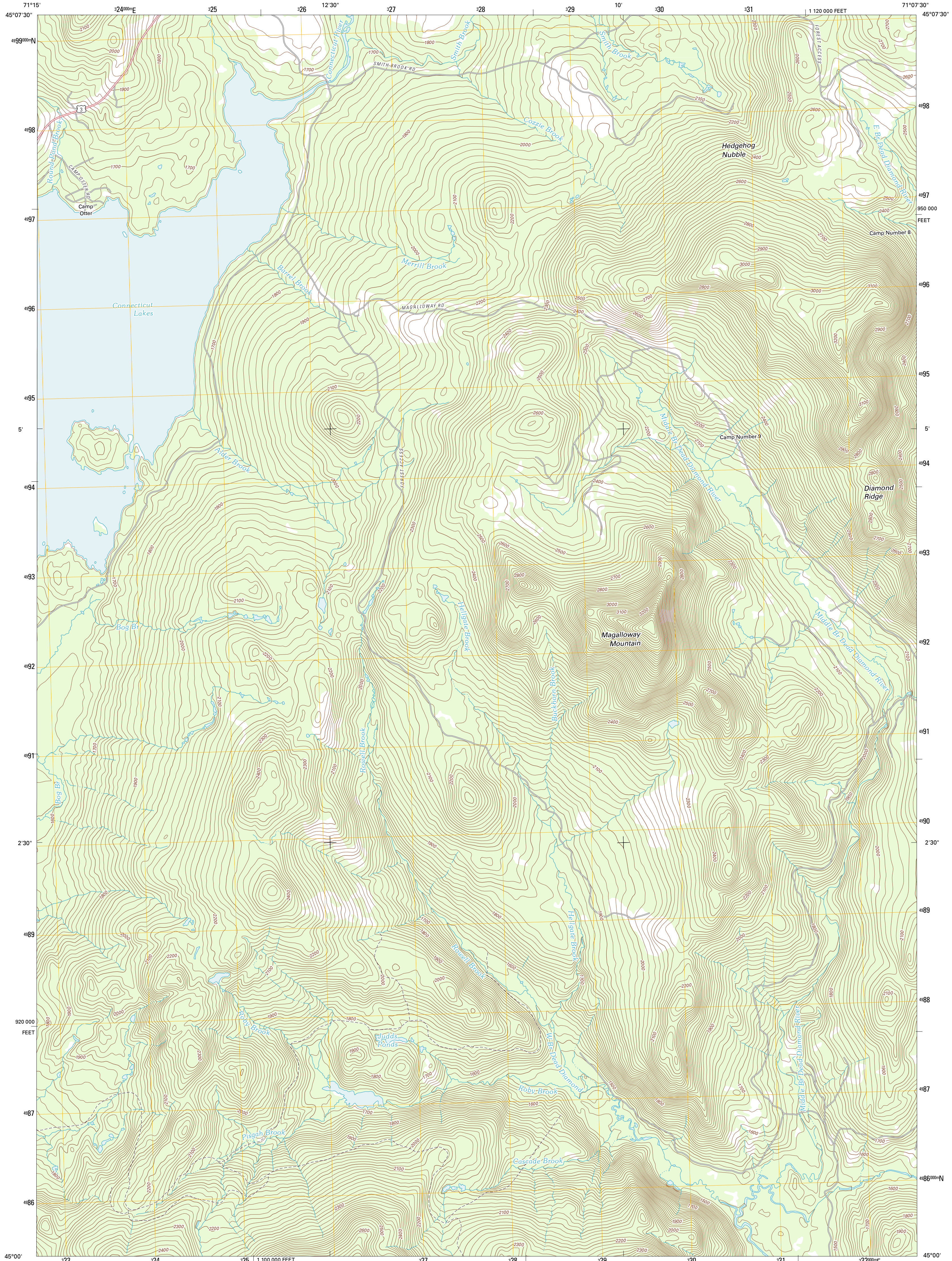




U.S. DEPARTMENT OF THE INTERIOR  
U. S. GEOLOGICAL SURVEY

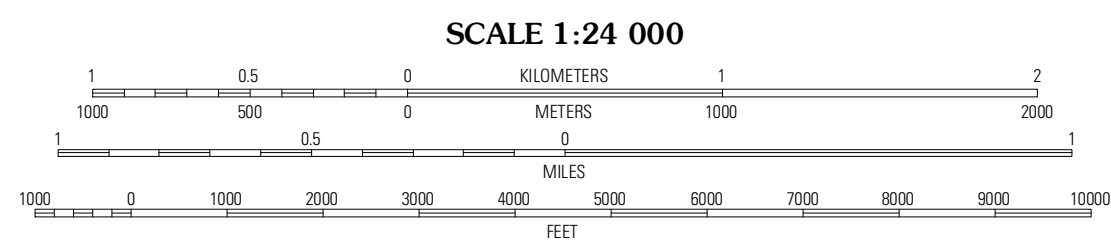
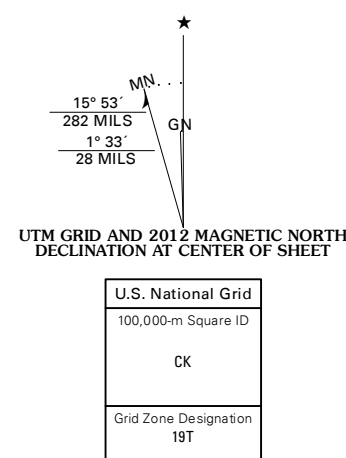


MAGALLOWAY MOUNTAIN QUADRANGLE  
NEW HAMPSHIRE-COOS CO.  
7.5-MINUTE SERIES



Produced by the United States Geological Survey  
North American Datum of 1983 (NAD83)  
World Geodetic System of 1984 (WGS84). Projection and  
1 000-meter grid: Universal Transverse Mercator, Zone 19T  
10 000-foot ticks: New Hampshire Coordinate System of  
1983

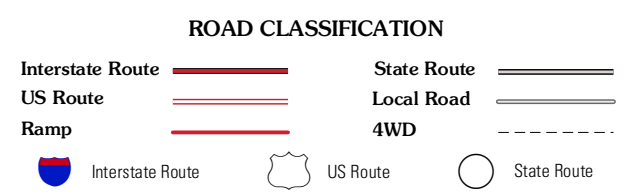
Imagery.....NAP, September 2011  
Roads.....©2006-2011 TomTom  
Names.....GNIS, 2011  
Hydrography.....National Hydrography Dataset, 2011  
Contours.....National Elevation Dataset, 2011  
Boundaries.....Census, IBWC, IBC, USGS, 1972 - 2010



QUADRANGLE LOCATION

Green Hill	Second Connecticut Lake	Rump Mountain
Lake Francis	Magalloway Mountain	Baseback Mountain
Diamond Pond	Mount Pisgah	Wilsons Mills

ADJOINING 7.5 QUADRANGLES



CONTOUR INTERVAL 20 FEET  
NORTH AMERICAN VERTICAL DATUM OF 1988

This map was produced to conform with the  
National Geospatial Program US Topo Product Standard, 2011.  
A metadata file associated with this product is draft version 0.6.2

MAGALLOWAY MOUNTAIN, NH  
2012