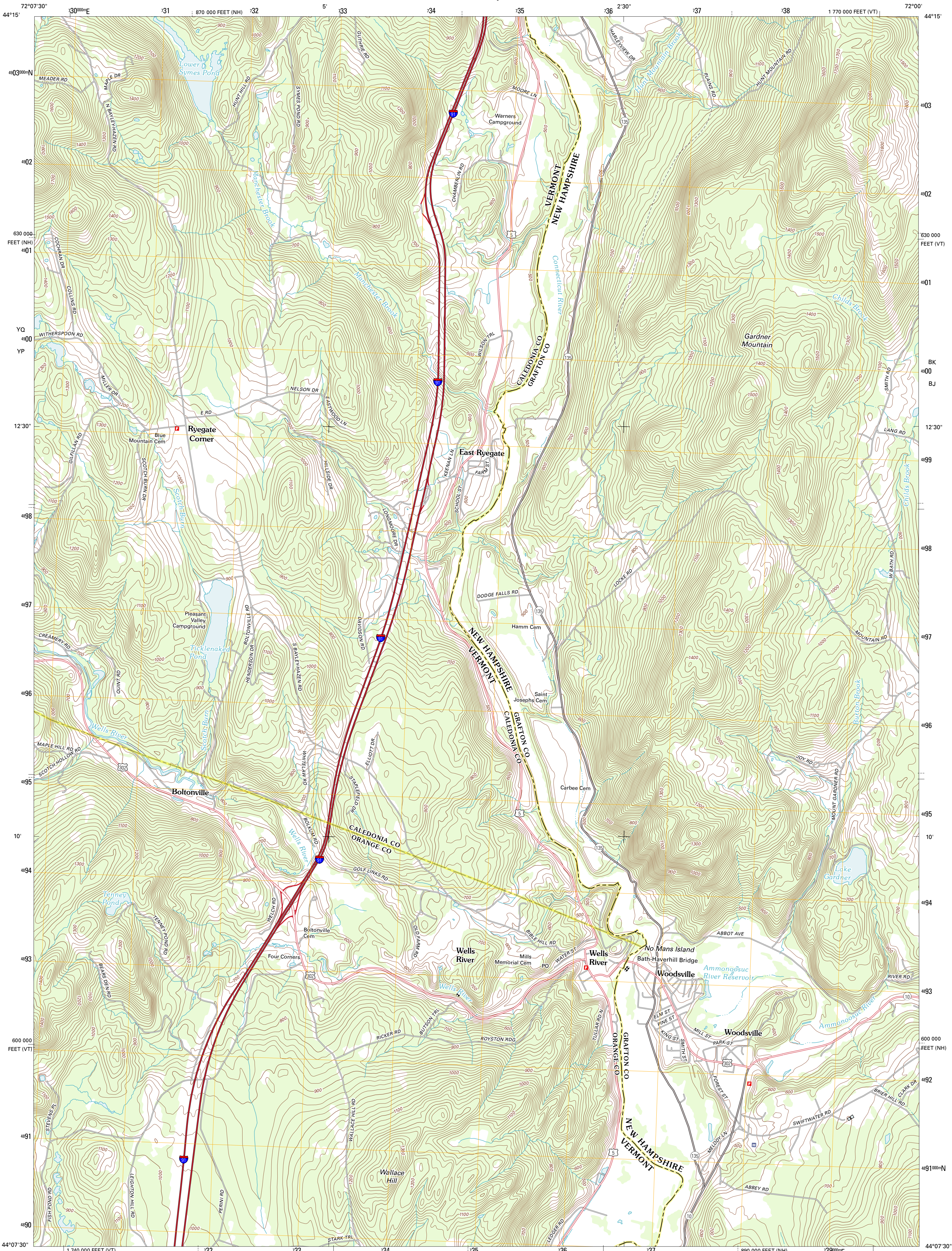




U.S. DEPARTMENT OF THE INTERIOR
U. S. GEOLOGICAL SURVEY

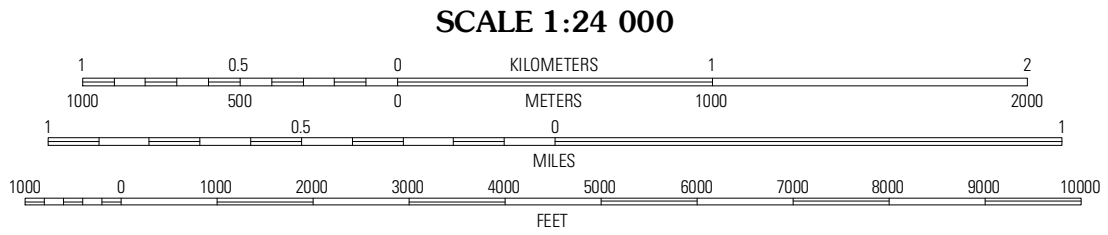
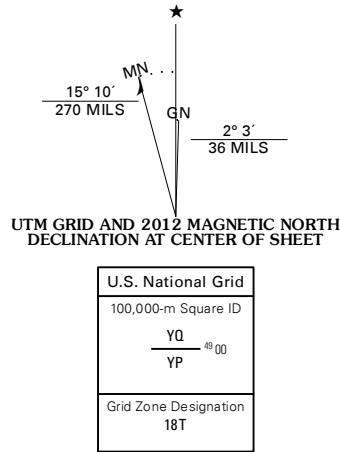


WOODSVILLE QUADRANGLE
NEW HAMPSHIRE-VERMONT
7.5-MINUTE SERIES



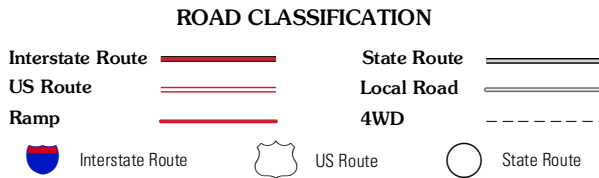
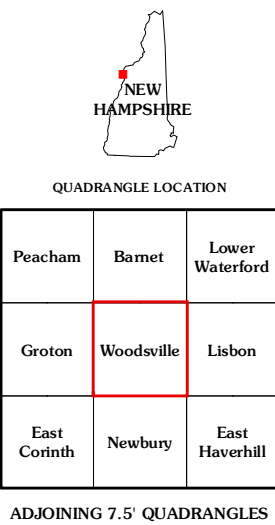
Produced by the United States Geological Survey
North American Datum of 1983 (NAD83)
World Geodetic System of 1984 (WGS84). Projection and
1 000-meter grid. Universal Transverse Mercator, Zone 18T
10 000-foot ticks. Vermont Coordinate System of 1983, New
Hampshire Coordinate System of 1983

Imagery.....NAIP, August 2011 - September 2011
Roads.....©2006-2011 TomTom
Names.....GNIS, 2011
Hydrography.....National Hydrography Dataset, 2011
Contours.....National Elevation Dataset, 2011
Boundaries.....Census, IBWC, IBC, USGS, 1972 - 2010



CONTOUR INTERVAL 20 FEET
NORTH AMERICAN VERTICAL DATUM OF 1988

This map was produced to conform with the
National Geospatial Program US Topo Product Standard, 2011.
A metadata file associated with this product is draft version 0.6.2



Peacham	Barnet	Lower Waterford
Groton	Woodsville	Lisbon
East Corinth	Newbury	East Haverhill

WOODSVILLE, NH-VT
2012