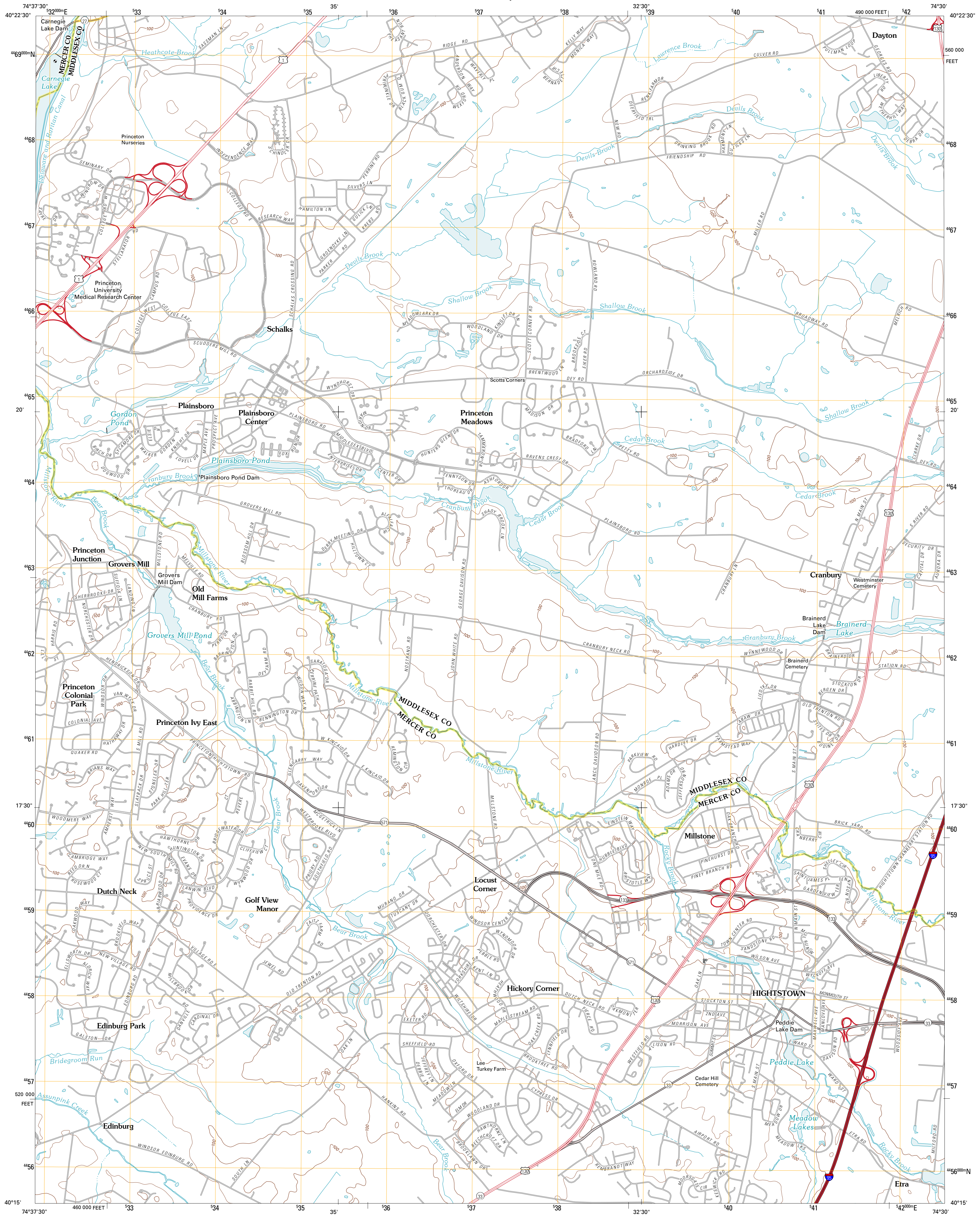




U.S. DEPARTMENT OF THE INTERIOR  
U. S. GEOLOGICAL SURVEY

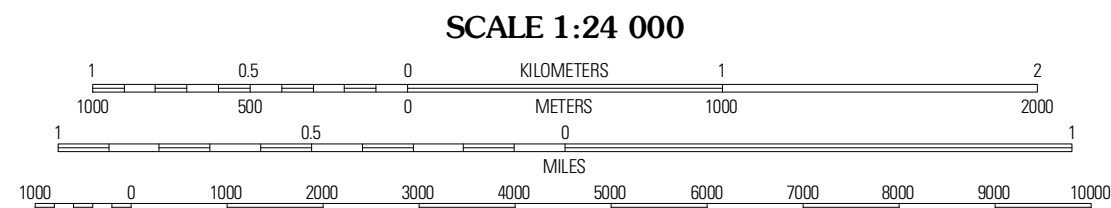
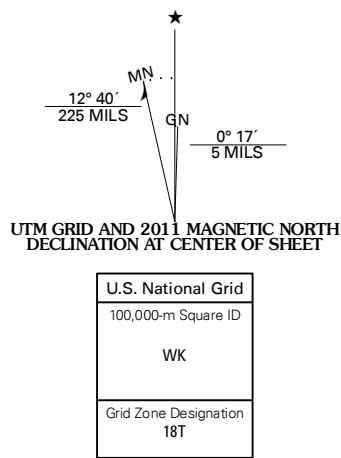


HIGHTSTOWN QUADRANGLE  
NEW JERSEY  
7.5-MINUTE SERIES

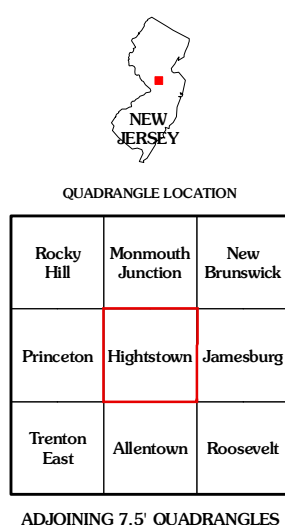


Produced by the United States Geological Survey  
North American Datum of 1983 (NAD83)  
World Geodetic System of 1984 (WGS84). Projection and  
1 000-meter grid: Universal Transverse Mercator, Zone 18T  
10 000-foot ticks: New Jersey Coordinate System of 1983

Imagery...State of New Jersey, January 2007 - January 2009  
Other imagery provided by DE, NY, PA  
Roads...©2006-2010 Tele Atlas  
Names...GNIS, 2010  
Hydrography...National Hydrography Dataset, 2007  
Contours...National Elevation Dataset, 2000  
Boundaries...Census, IBWC, IBC, USGS, 1972 - 2010



CONTOUR INTERVAL 20 FEET  
NORTH AMERICAN VERTICAL DATUM OF 1988  
This map was produced to conform with version 0.5.10  
of the USGS US Topo Product Standard.  
A metadata file associated with this product is draft version 0.5.15.NJ



HIGHTSTOWN, NJ  
2011