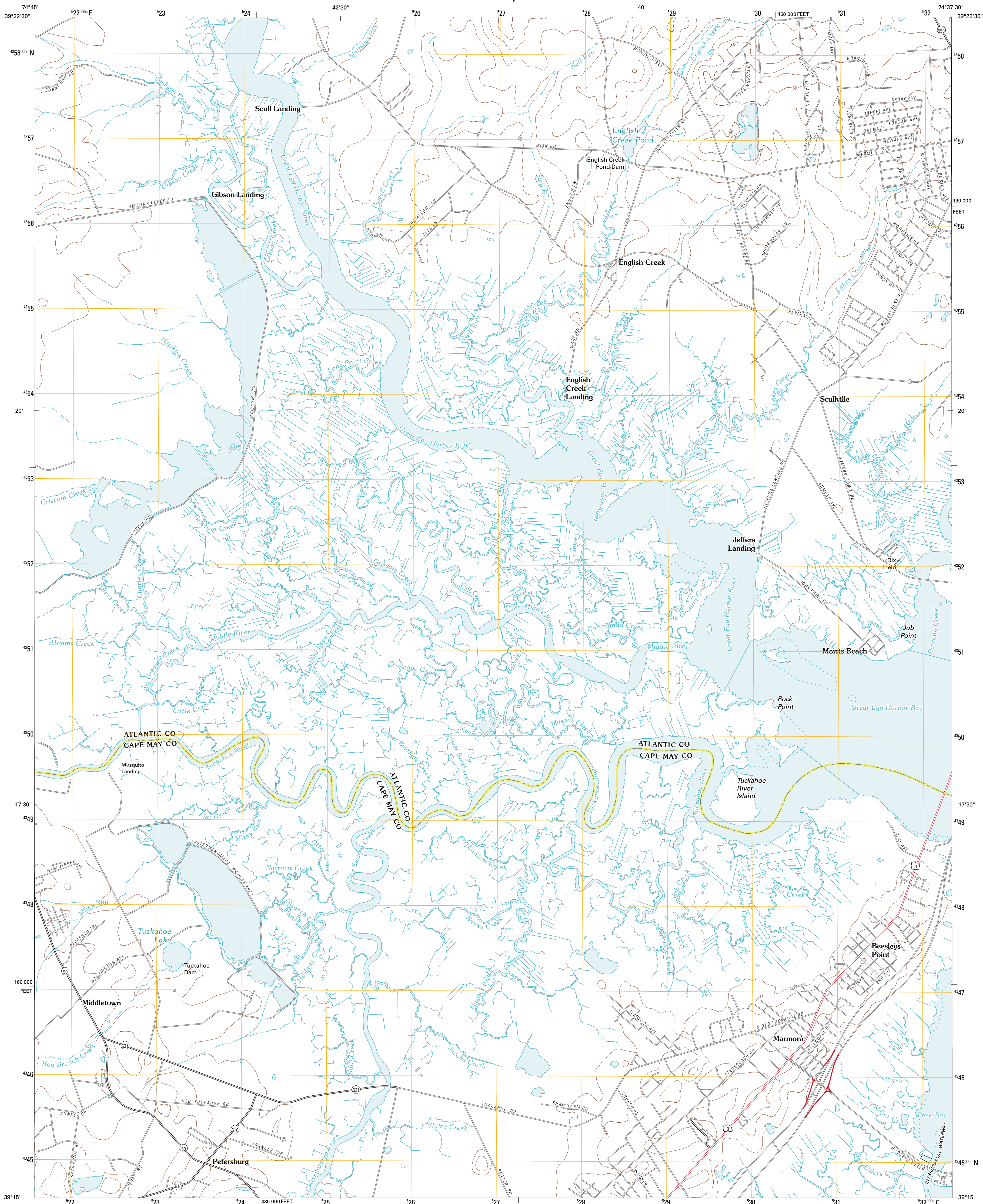




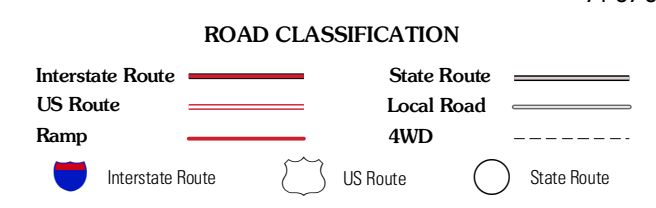
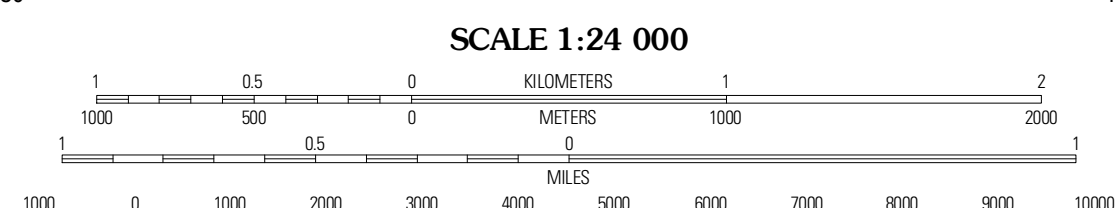
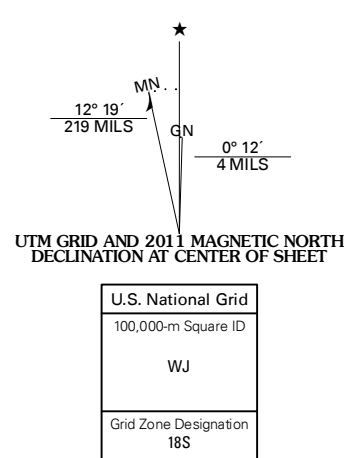
U.S. DEPARTMENT OF THE INTERIOR  
U. S. GEOLOGICAL SURVEY



MARMORA QUADRANGLE  
NEW JERSEY  
7.5-MINUTE SERIES



Produced by the United States Geological Survey  
North American Datum of 1983 (NAD83)  
World Geodetic System of 1984 (WGS84). Projection and  
1 000-meter grid: Universal Transverse Mercator, Zone 18S  
10 000-foot ticks: New Jersey Coordinate System of 1983



QUADRANGLE LOCATION

Dorothy	Mays Landing	Pleasantville
Tuckahoe	Marmora	Ocean City
Woodbine	Sea Isle City	Sea Isle City OE E

ADJOINING 7.5 QUADRANGLES

Imagery.....State of New Jersey, January 2007  
Other Imagery provided by DE, NY, PA  
©2006-2010 Tele Atlas  
Names.....GNIS, 2010  
Hydrography.....National Hydrography Dataset, 2007  
Centers.....National Elevation Dataset, 2001  
Boundaries.....Census, IBWC, IBC, USGS, 1972 - 2010

CONTOUR INTERVAL 10 FEET  
NORTH AMERICAN VERTICAL DATUM OF 1988  
This map was produced to conform with version 0.5.10  
of the USGS US Topo Product Standard.  
A metadata file associated with this product is draft version 0.5.15.NJ

MARMORA, NJ  
2011