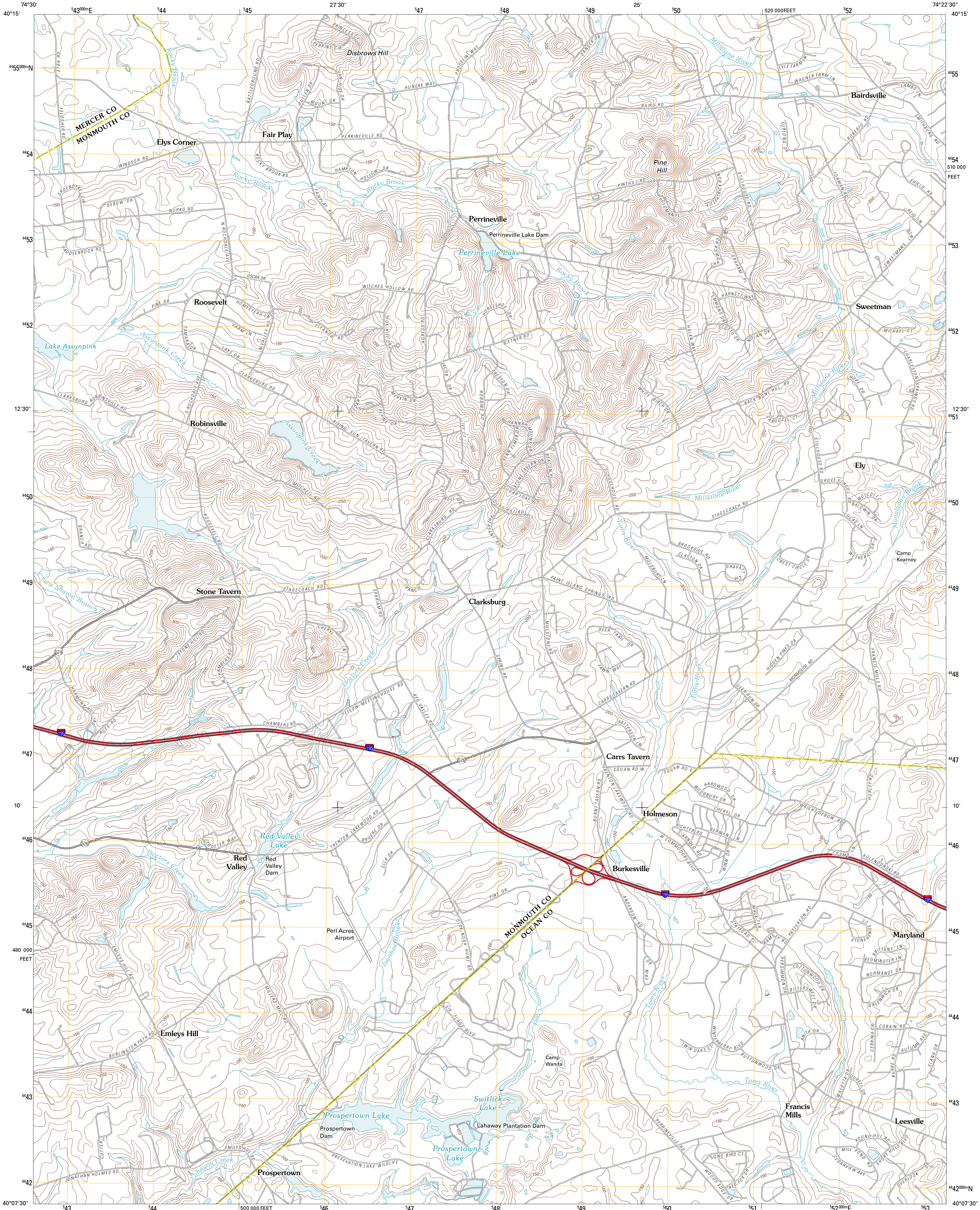




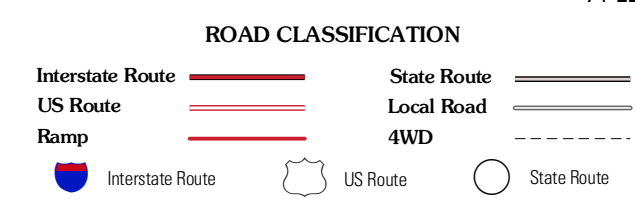
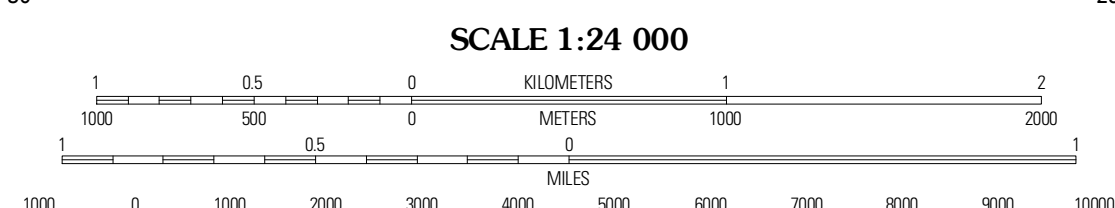
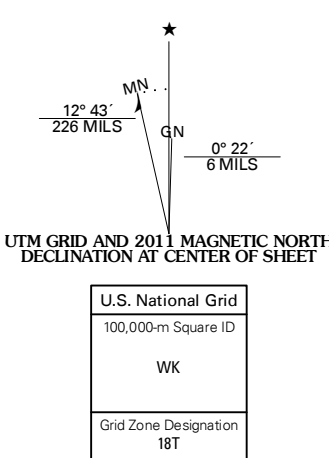
U.S. DEPARTMENT OF THE INTERIOR
U. S. GEOLOGICAL SURVEY



ROOSEVELT QUADRANGLE
NEW JERSEY
7.5-MINUTE SERIES



Produced by the United States Geological Survey
North American Datum of 1983 (NAD83)
World Geodetic System of 1984 (WGS84), Projection and
1 000-meter grid: Universal Transverse Mercator, Zone 18T
10 000-foot ticks: New Jersey Coordinate System of 1983



Imagery.....State of New Jersey, January 2007
Other Imagery provided by DE, NY, PA
Roads.....©2006-2010 Tele Atlas
Names, 2010
Hydrography.....National Hydrography Dataset, 2007
Contours.....National Elevation Dataset, 2001
Boundaries.....Census, IBWC, IBC, USGS, 1972 - 2010

CONTOUR INTERVAL 10 FEET
NORTH AMERICAN VERTICAL DATUM OF 1988
This map was produced to conform with version 0.5.10
of the USGS US Topo Product Standard.
A metadata file associated with this product is draft version 0.5.15.NJ

QUADRANGLE LOCATION

Hightstown	Jamesburg	Freehold
Allentown	Roosevelt	Adelphi
New Egypt	Cassville	Lakehurst

ADJOINING 7.5 QUADRANGLES

ROOSEVELT, NJ
2011