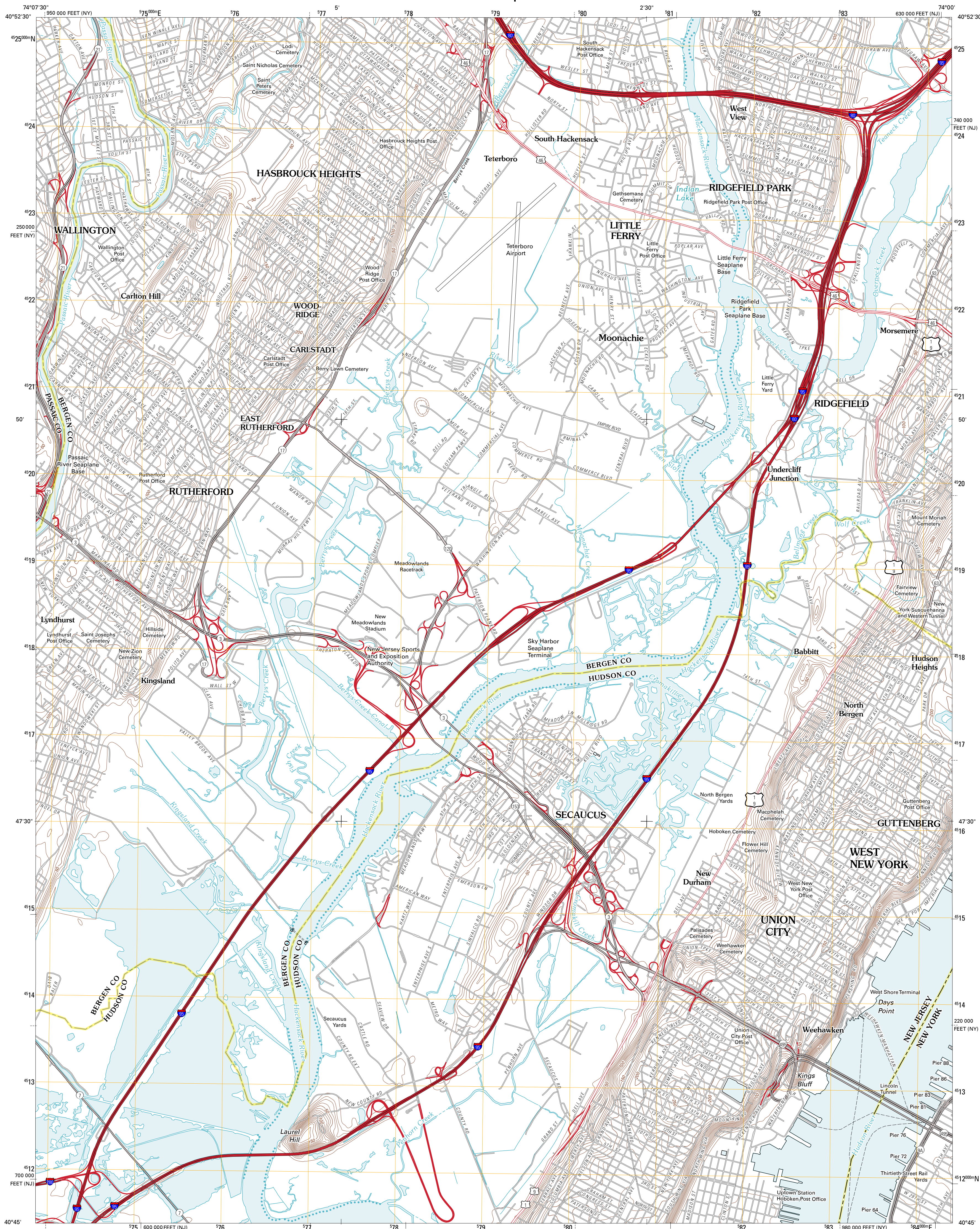




U.S. DEPARTMENT OF THE INTERIOR
U. S. GEOLOGICAL SURVEY

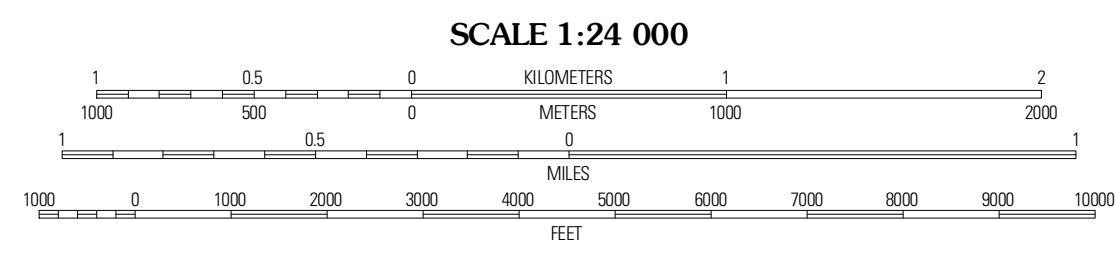
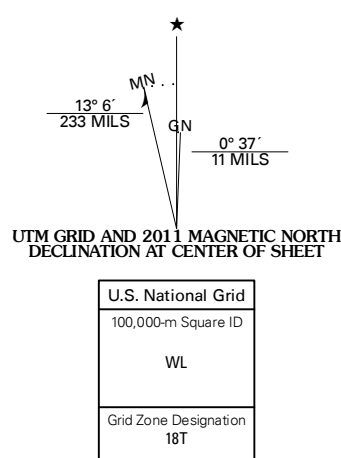


WEEHAWKEN QUADRANGLE
NEW JERSEY-NEW YORK
7.5-MINUTE SERIES

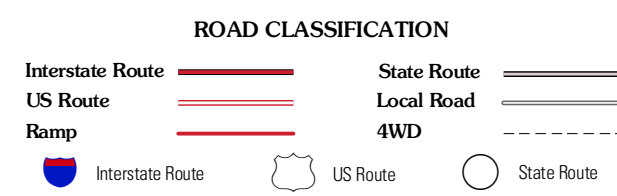
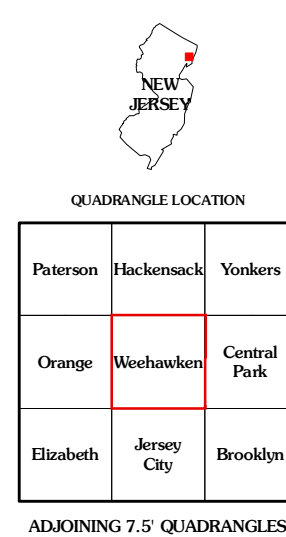


Produced by the United States Geological Survey
North American Datum of 1983 (NAD83)
World Geodetic System of 1984 (WGS84) Projection and
1 000-meter grid: Universal Transverse Mercator, Zone 18T
10 000-foot ticks: New Jersey Coordinate System of 1983,
New York Coordinate System of 1983 (long island zone)

Imagery...State of New Jersey, January 2007 - January 2009
Other imagery provided by DE, NY, PA
Roads...©2006-2010 Tele Atlas
Names...GNIS, 2010
Hydrography...National Hydrography Dataset, 2007
Contours...National Elevation Dataset, 2001
Boundaries...Census, IBWC, IBC, USGS, 1972 - 2010



CONTOUR INTERVAL 10 FEET
NORTH AMERICAN VERTICAL DATUM OF 1988
This map was produced to conform with version 0.5.10
of the USGS US Topo Product Standard.
A metadata file associated with this product is draft version 0.5.15.NJ



WEEHAWKEN, NJ-NY
2011