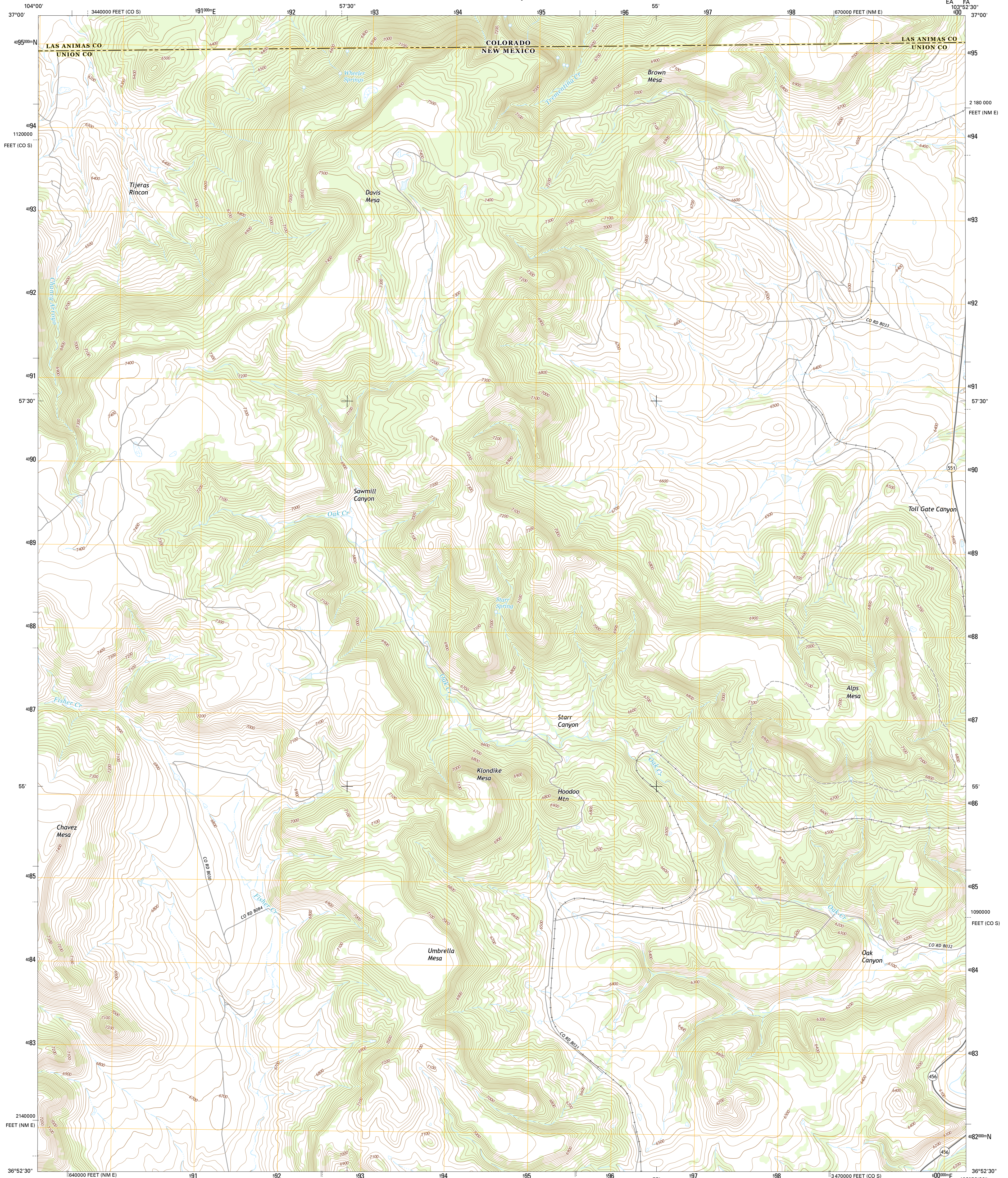




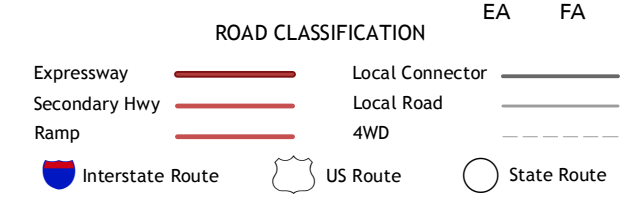
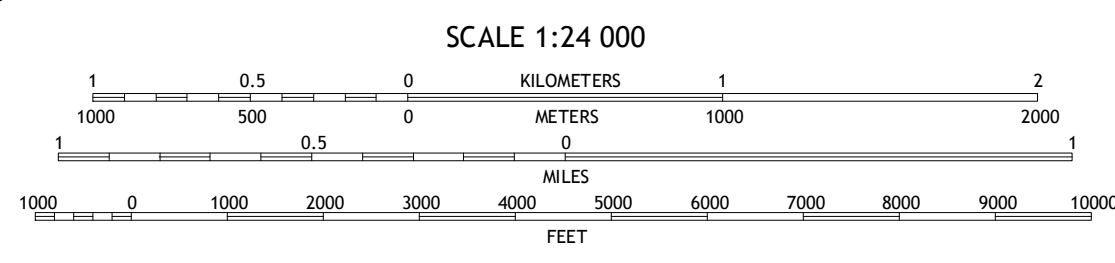
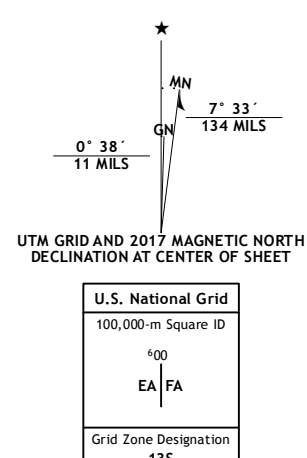
U.S. DEPARTMENT OF THE INTERIOR
U.S. GEOLOGICAL SURVEY



ALPS MESA QUADRANGLE
NEW MEXICO-COLORADO
7.5-MINUTE SERIES



Produced by the United States Geological Survey
 North American Datum of 1983 (NAD83)
 World Geodetic System of 1984 (WGS84). Projection and
 10 000-foot ticks: New Mexico Coordinate System of 1983 (east
 zone), Colorado Coordinate System of 1983 (south zone)
 This map is not a legal document. Boundaries may be
 generalized for this map scale. Private lands within government
 reservations may not be shown. Obtain permission before
 entering private lands.
 Imagery.....NAIP, November 2015
 Roads.....U.S. Census Bureau, 2015
 Names.....U.S. Census Bureau, 2015
 Hydrography.....National Hydrography Dataset, 2015
 Contours.....National Elevation Dataset, 2002
 Boundaries.....Multiple sources; see metadata file 1972 - 2016
 Public Land Survey System.....BLM, 2016
 Wetlands.....FWS National Wetlands Inventory 1977 - 2014



1	2	3
4	5	6
7	8	

ADJOINING QUADRANGLES

- 1 Trinchera
- 2 Branson
- 3 Branson SE
- 4 Trinchera Pass
- 5 Emery Peak
- 6 Robinson Peak
- 7 Folsom
- 8 Des Moines

CONTOUR INTERVAL 20 FEET
 NORTH AMERICAN VERTICAL DATUM OF 1988
 This map was produced to conform with the
 National Geospatial Program US Topo Product Standard, 2011.
 A metadata file associated with this product is draft version 0.6.19

ALPS MESA, NM-CO
2017



NSN 7 16 0 1 6 2 0 2 2 4 2 4 7 1 1
 NGA REF NO. USGS 24 K 7 1 1