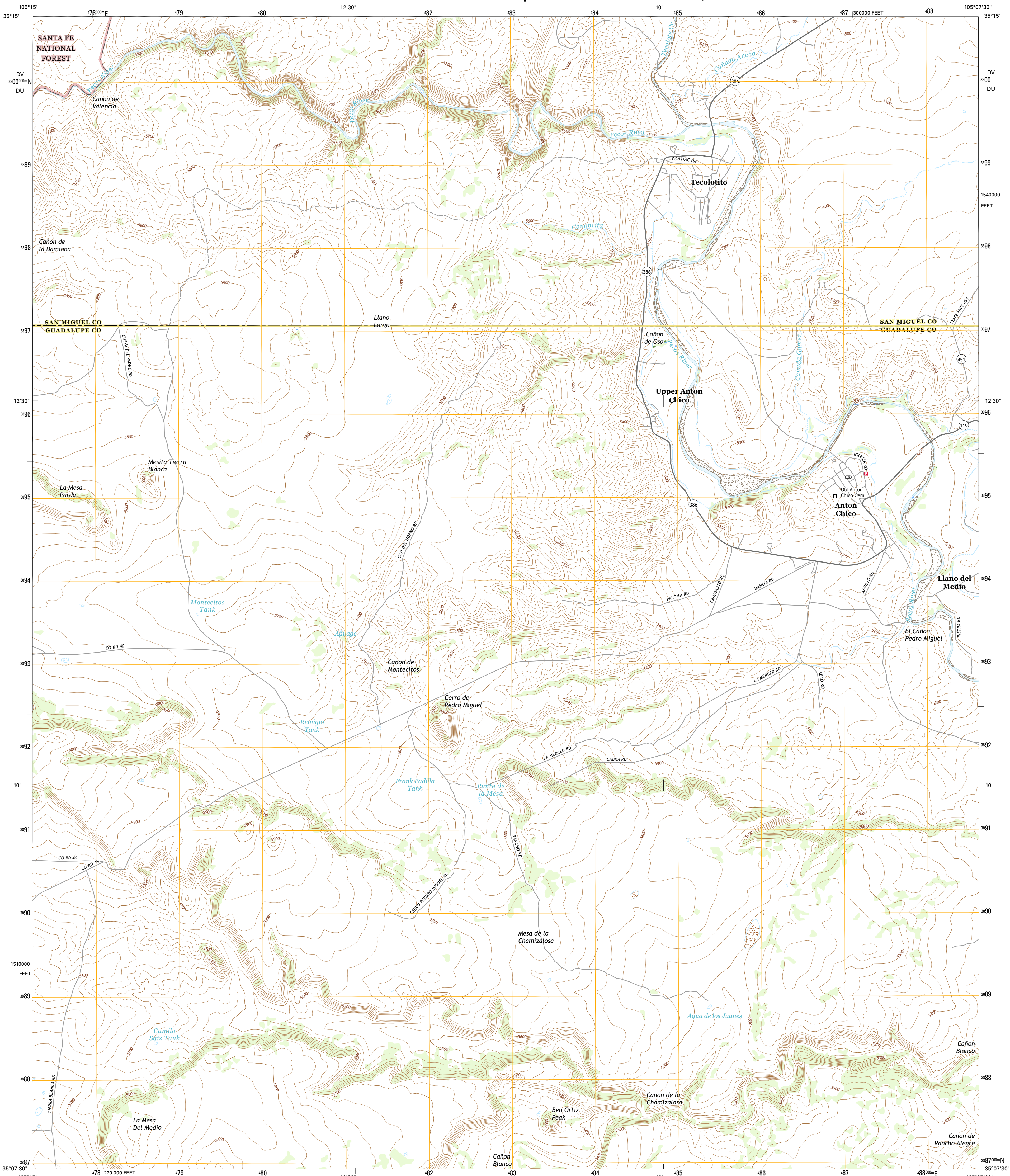




U.S. DEPARTMENT OF THE INTERIOR  
U.S. GEOLOGICAL SURVEY



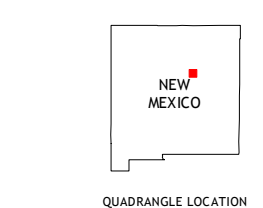
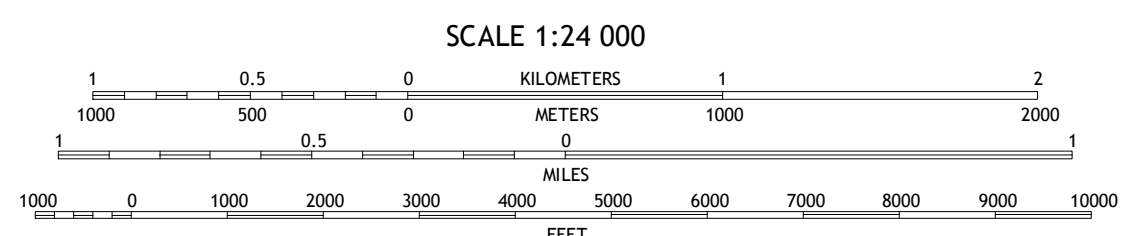
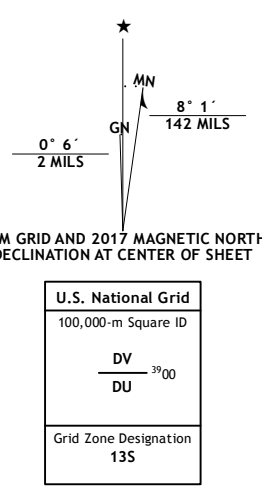
ANTON CHICO QUADRANGLE  
NEW MEXICO  
7.5-MINUTE SERIES



Produced by the United States Geological Survey  
North American Datum of 1983 (NAD83)  
World Geodetic System of 1984 (WGS84) Projection and  
1 000-meter grid: Universal Transverse Mercator, Zone 13S  
10 000-foot ticks: New Mexico Coordinate System of 1983 (east zone)

This map is not a legal document. Boundaries may be generalized for this map scale. Private lands within government reservations may not be shown. Obtain permission before entering private lands.

Imagery: N.A.I.P., September 2014  
Roads: U.S. Census Bureau, 2015-2016 Data with limited Forest Service updates, 2012-2016  
Names: GNIS, 2016  
Hydrography: National Hydrography Dataset, 2014  
Contours: National Elevation Dataset, 2000  
Boundaries: Multiple sources; see metadata file 1972-2016  
Public Land Survey System: BLM, 2016  
Wetlands: FWS National Wetlands Inventory 1977-2014



ROAD CLASSIFICATION

Expressway	Local Connector
Secondary Hwy	Local Road
Interstate Route	4WD
Ramp	US Route
FS Primary Route	FS Passenger Route
	FS High Clearance Route
	State Route

Check with local Forest Service unit for current travel conditions and restrictions.

1	2	3
4	5	6
7	8	

- 1 Villanueva
- 2 Apache Springs
- 3 Mesa Chupinas
- 4 San Juan
- 5 Dilla
- 6 Potrillo Hill
- 7 Mesa Palo Amarillo
- 8 Thompson Ranch

ANTON CHICO, NM  
2017

