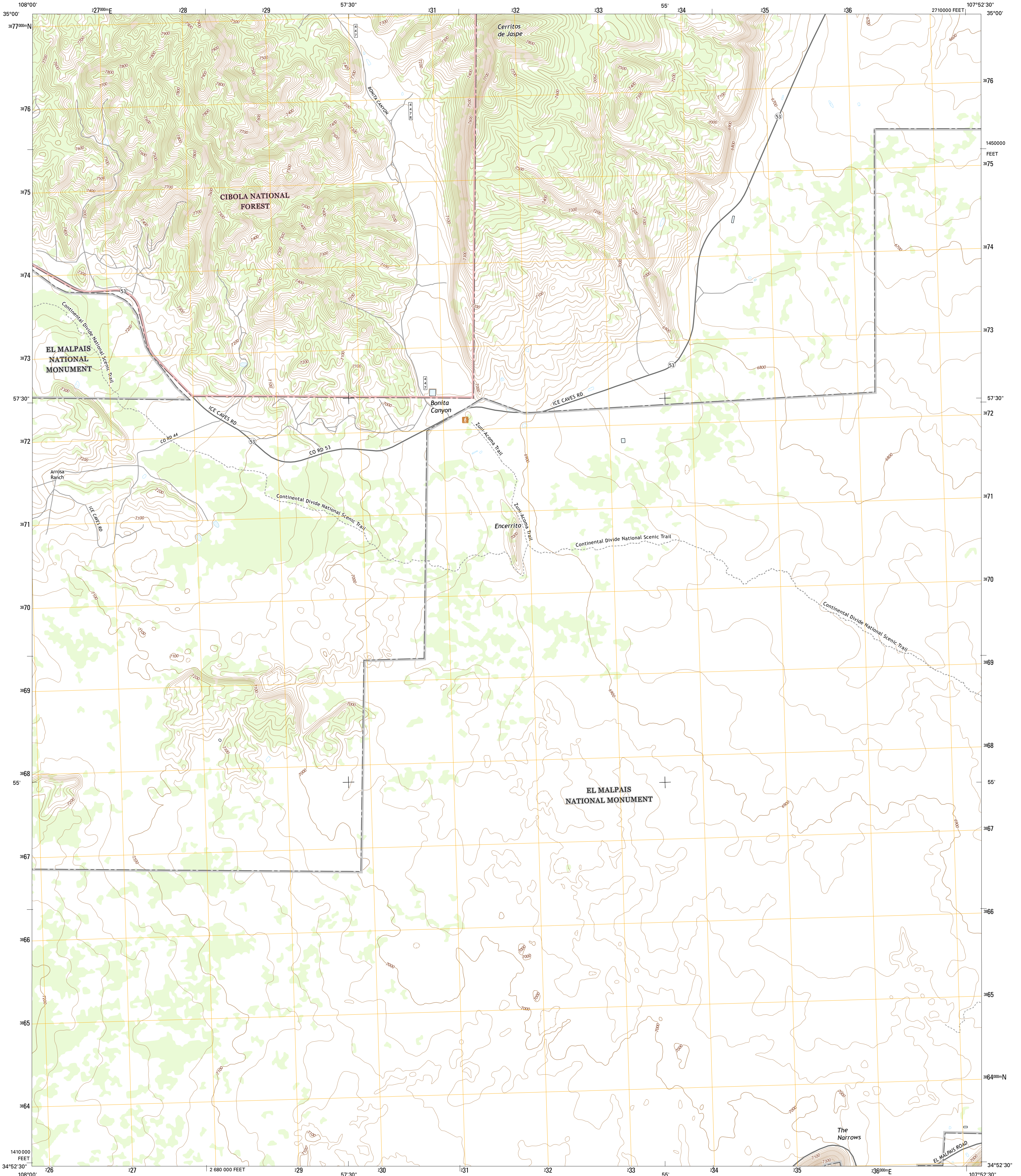




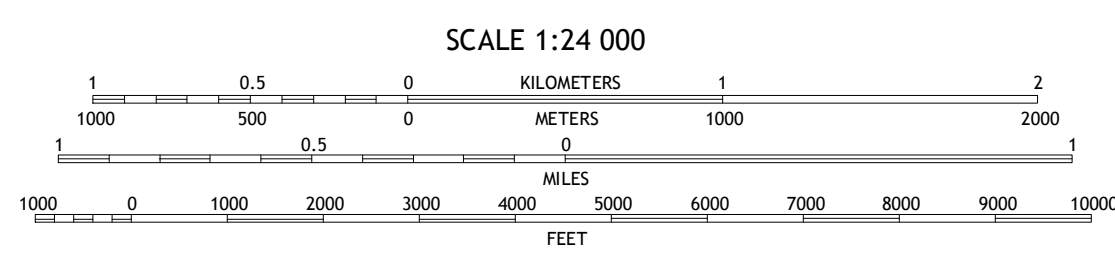
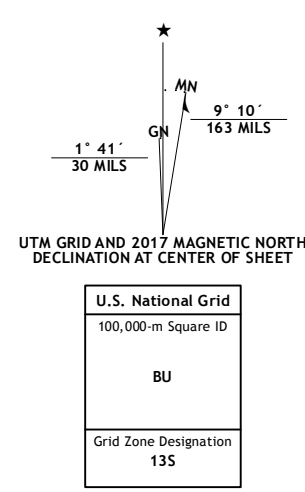
U.S. DEPARTMENT OF THE INTERIOR
U.S. GEOLOGICAL SURVEY



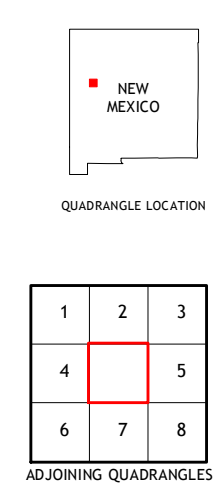
ARROSA RANCH QUADRANGLE
NEW MEXICO-CIBOLA CO.
7.5-MINUTE SERIES



Produced by the United States Geological Survey
 North American Datum of 1983 (NAD83)
 World Geodetic System of 1984 (WGS84) Projection and
 1 000-meter grid: Universal Transverse Mercator, Zone 13S
 10 000-foot ticks: New Mexico Coordinate System of 1983 (west zone)
 This map is not a legal document. Boundaries may be generalized for this map scale. Private lands within government reservations may not be shown. Obtain permission before entering private lands.
 Imagery: N.A.I.P. September 2014
 Roads: U.S. Census Bureau, 2015 - 2016
 Roads within US Forest Service Lands: FSTopo Data with limited Forest Service updates, 2012 - 2016
 Names: GNIS, 2016
 Hydrography: National Hydrography Dataset, 2014
 Contours: National Elevation Dataset, 2000
 Boundaries: Multiple sources; see metadata file 1972_2016
 Public Land Survey System: BLM, 2016
 Wetlands: FWS National Wetlands Inventory 1977 - 2014



CONTOUR INTERVAL 20 FEET
 NORTH AMERICAN VERTICAL DATUM OF 1988
 This map was produced to conform with the National Geospatial Program US Topo Product Standard, 2011. A metadata file associated with this product is draft version 0.6.19



ROAD CLASSIFICATION

Expressway	Local Connector
Secondary Hwy	Local Road
Ramp	4WD
Interstate Route	US Route
FS Primary Route	FS Passenger Route
	FS High Clearance Route

ADJOINING QUADRANGLES

1 Paxton Springs	2 San Rafael	3 Grants SE
4 Ice Caves	5 Los Pinos	6 Ice Caves SE
7 North Pasture	8 Laguna Honda	

Check with local Forest Service unit for current travel conditions and restrictions.
ARROSA RANCH, NM
 2017

