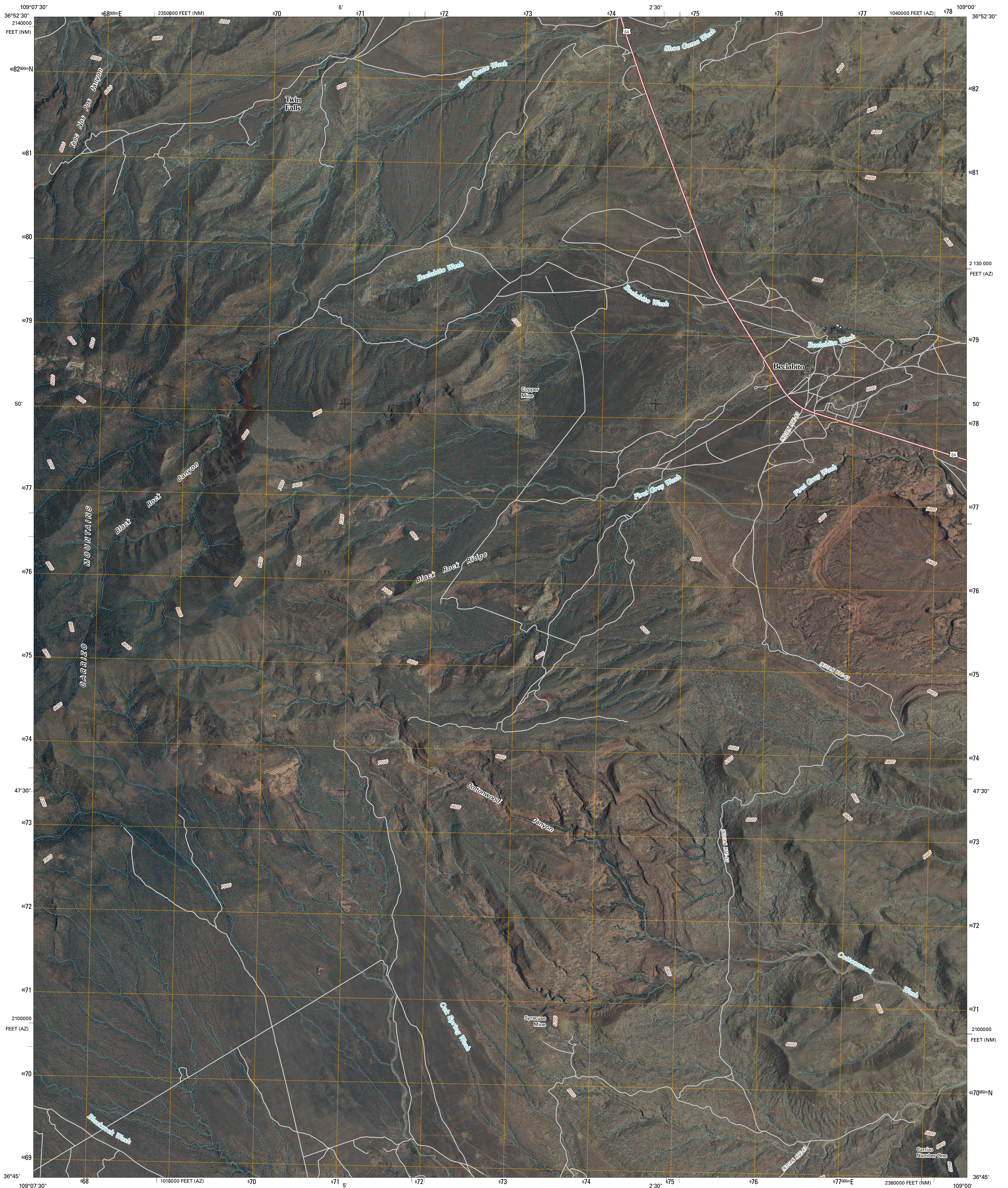




U.S. DEPARTMENT OF THE INTERIOR
U. S. GEOLOGICAL SURVEY

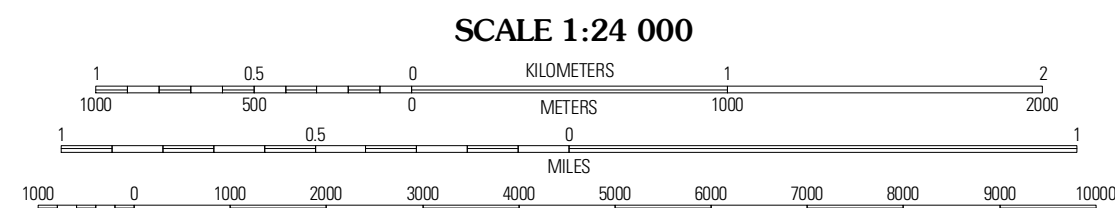
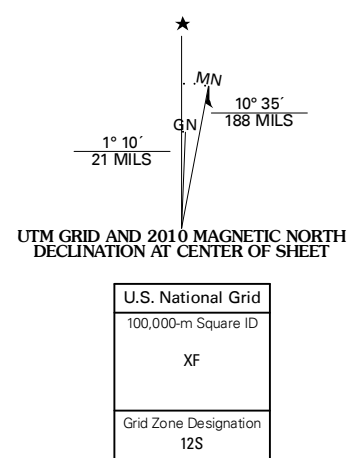


BECLABITO QUADRANGLE
NEW MEXICO-ARIZONA
7.5-MINUTE SERIES



Produced by the United States Geological Survey
North American Datum of 1983 (NAD83)
World Geodetic System of 1984 (WGS84) Projection and
1 000-meter grid; Universal Transverse Mercator, Zone 12S
10 000-foot ticks; New Mexico Coordinate System of 1983
(west zone) and Arizona Coordinate System of 1983
(east zone)

Imagery:.....NAP, January 2005 - May 2009
Roads:.....©2006-2010 Tele Atlas
Names:.....©2006-2010 Tele Atlas
Hydrography:.....National Hydrography Dataset, 2005
Contours:.....National Elevation Dataset, 1999



CONTOUR INTERVAL 40 FEET
NORTH AMERICAN VERTICAL DATUM OF 1988

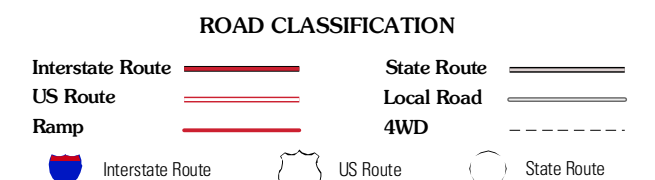
This map was produced to conform with version 0.5.10 of the draft USGS Standards for 7.5-Minute Quadrangle Maps. A metadata file associated with this product is draft version 0.5.11



QUADRANGLE LOCATION

Cow Butte	Tree Nos Pos	Sillies Spring
Pastora Peak	Beclabito	Rocky Point
Boiling Over Well	Horse Mesa	Sand Spring

ADJOINING 7.5' QUADRANGLES



BECLABITO, NM-AZ
2010