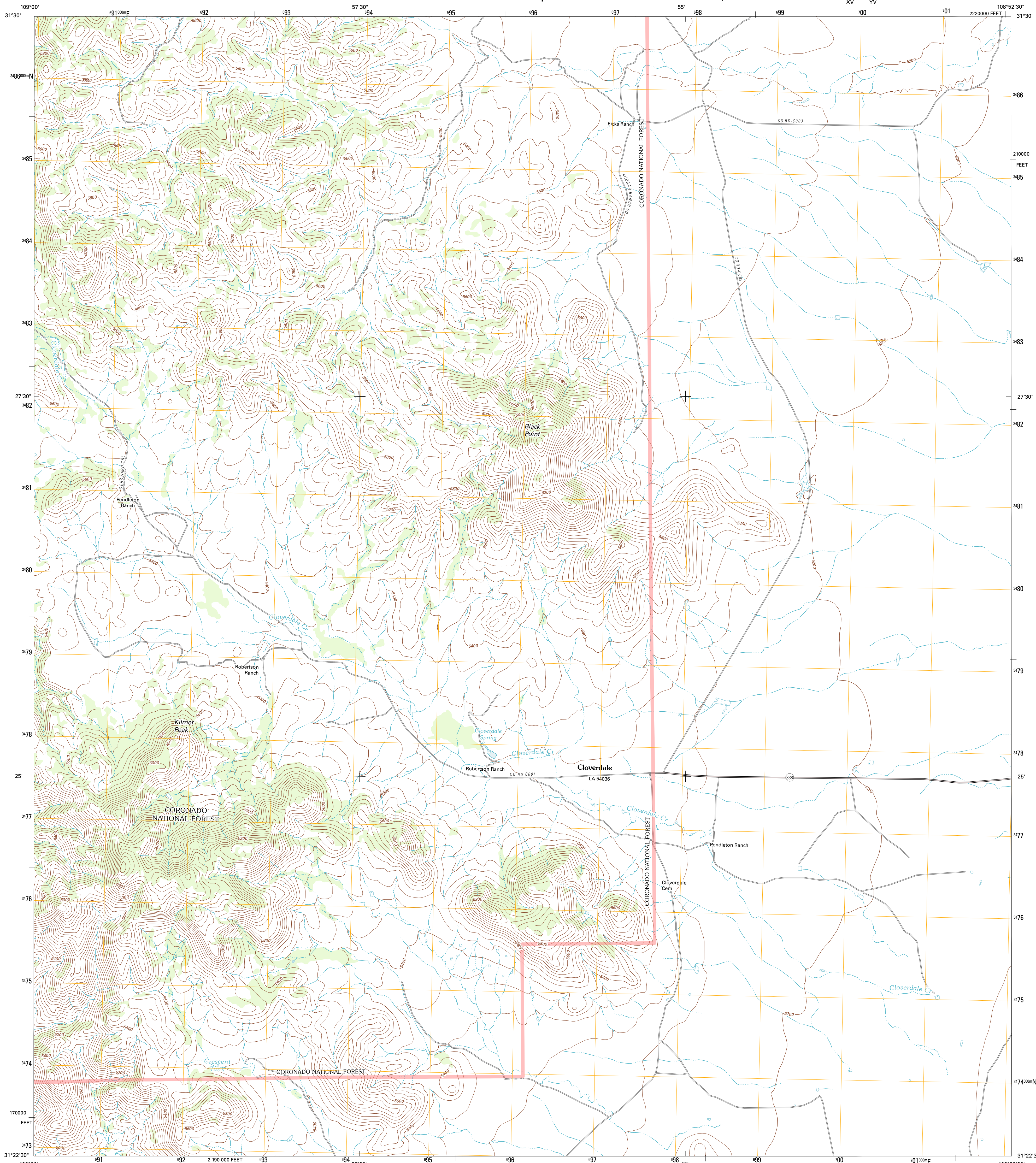




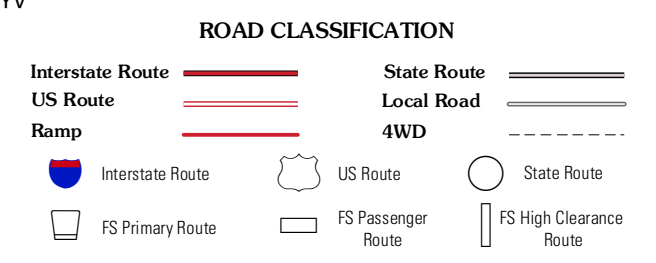
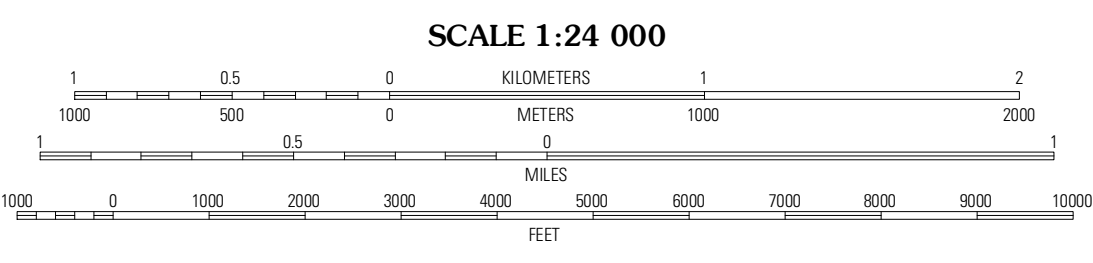
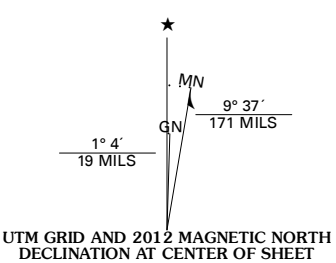
U.S. DEPARTMENT OF THE INTERIOR
U. S. GEOLOGICAL SURVEY



BLACK POINT QUADRANGLE
NEW MEXICO-HIDALGO CO.
7.5-MINUTE SERIES



Produced by the United States Geological Survey
North American Datum of 1983 (NAD83)
World Geodetic System of 1984 (WGS84) Projection and
1 000-meter grid: Universal Transverse Mercator, Zone 12R
10 000-foot ticks: New Mexico Coordinate System of 1983
(west zone)



Images: NADIP, May 2009
Roads: 2006-2011 TomTom
Roads within US Forest Service Lands: FSTopo Data
with limited Forest Service updates, 2009
Names: GNIS, 2011
Hydrography: National Hydrography Dataset, 2009
Contours: National Elevation Dataset, 2001
Boundaries: Census, IBWC, IBC, USGS, 1972 - 2010

U.S. National Grid	100,000m Square ID
	XV YV
Grid Zone Designation	12R

This map was produced to conform with the
National Geospatial Program US Topo Product Standard, 2011.
A metadata file associated with this product is draft version 0.6.1

Skeleton Canyon	Clinton Draw	Animas Peak
Gauchaque Spring	Black Point	Fitzpatrick
Gauchaque Canyon	Gauchaque Pass	Lang Canyon

ADJOINING 7.5 QUADRANGLES

BLACK POINT, NM
2012