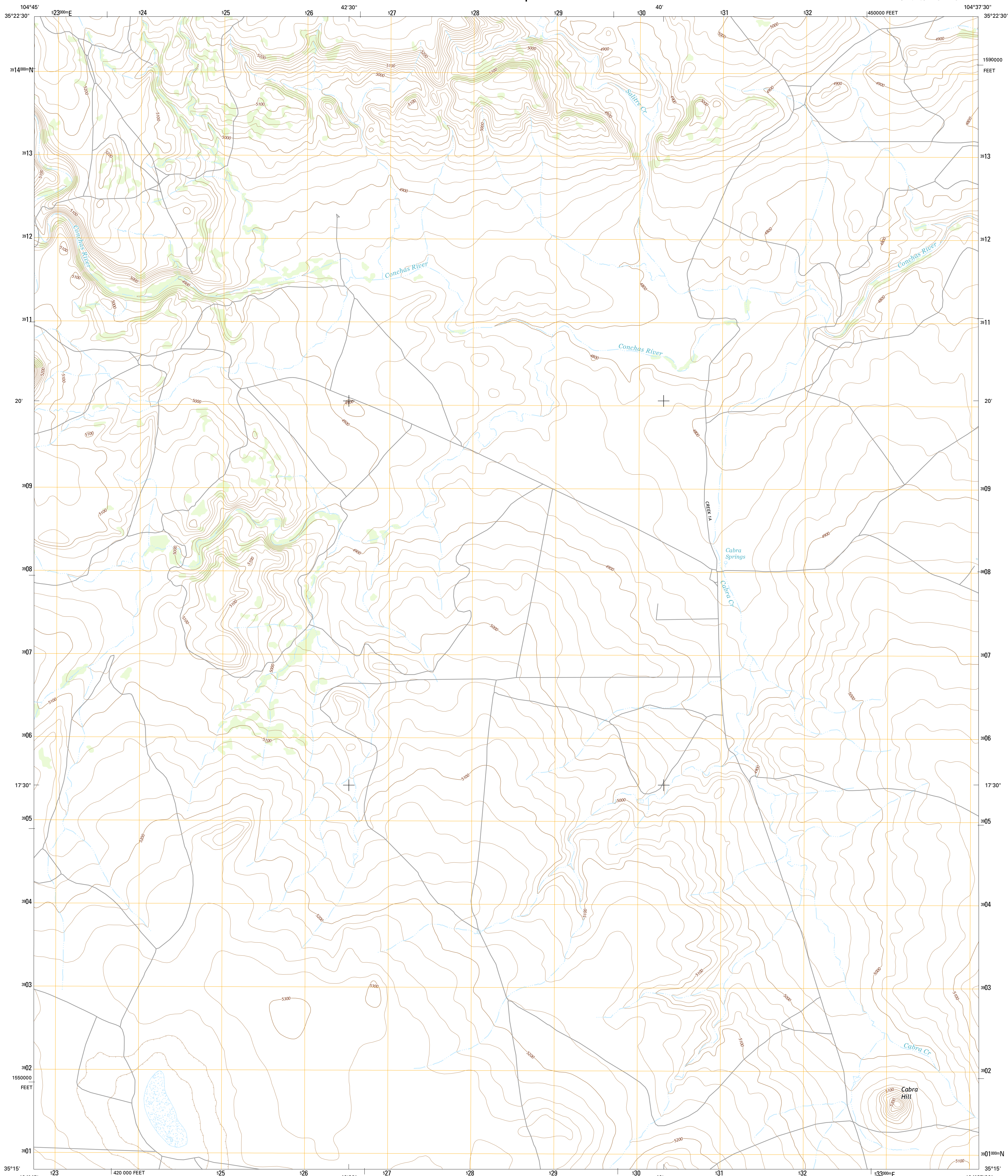




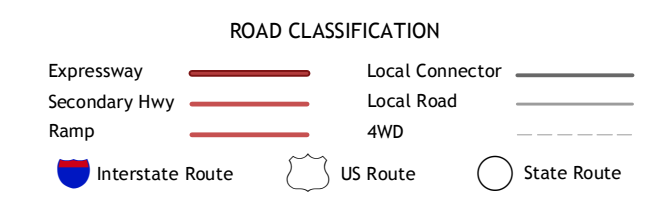
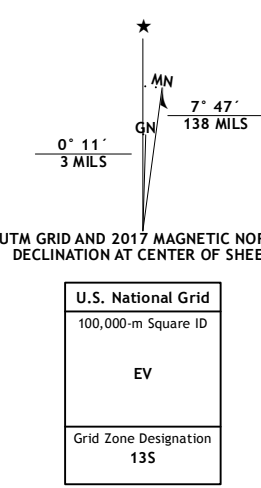
U.S. DEPARTMENT OF THE INTERIOR  
U.S. GEOLOGICAL SURVEY



CABRA HILL QUADRANGLE  
NEW MEXICO-SAN MIGUEL CO.  
7.5-MINUTE SERIES



**Produced by the United States Geological Survey**  
 North American Datum of 1983 (NAD83)  
 World Geodetic System of 1984 (WGS84) Projection and  
 1 000-meter grid: Universal Transverse Mercator, Zone 13S  
 10 000-foot ticks: New Mexico Coordinate System of 1983 (east zone)  
 This map is not a legal document. Boundaries may be  
 generalized for this map scale. Private lands within government  
 reservations may not be shown. Obtain permission before  
 entering private lands.  
 Imagery.....N.A.I.P., October 2014  
 Roads.....U.S. Census Bureau, 2015 - 2016  
 Names.....GNIS, 2016  
 Hydrography.....National Hydrography Dataset, 2014  
 Contours.....National Elevation Dataset, 1998  
 Boundaries.....Multiple sources; see metadata file 1972 - 2016  
 Public Land Survey System.....BLM, 2016  
 Wetlands.....FWS National Wetlands Inventory 1977 - 2014



1	2	3
4	5	6
7	8	

ADJOINING QUADRANGLES

1 Flagstone Mountain  
 2 Punta Del Chorro  
 3 Cerro De Corazon  
 4 Cactus Tank  
 5 Mesa Pino  
 6 Horse Pasture Tank  
 7 Bar V Ranch  
 8 Mesa Chericco

**CABRA HILL, NM**  
2017

