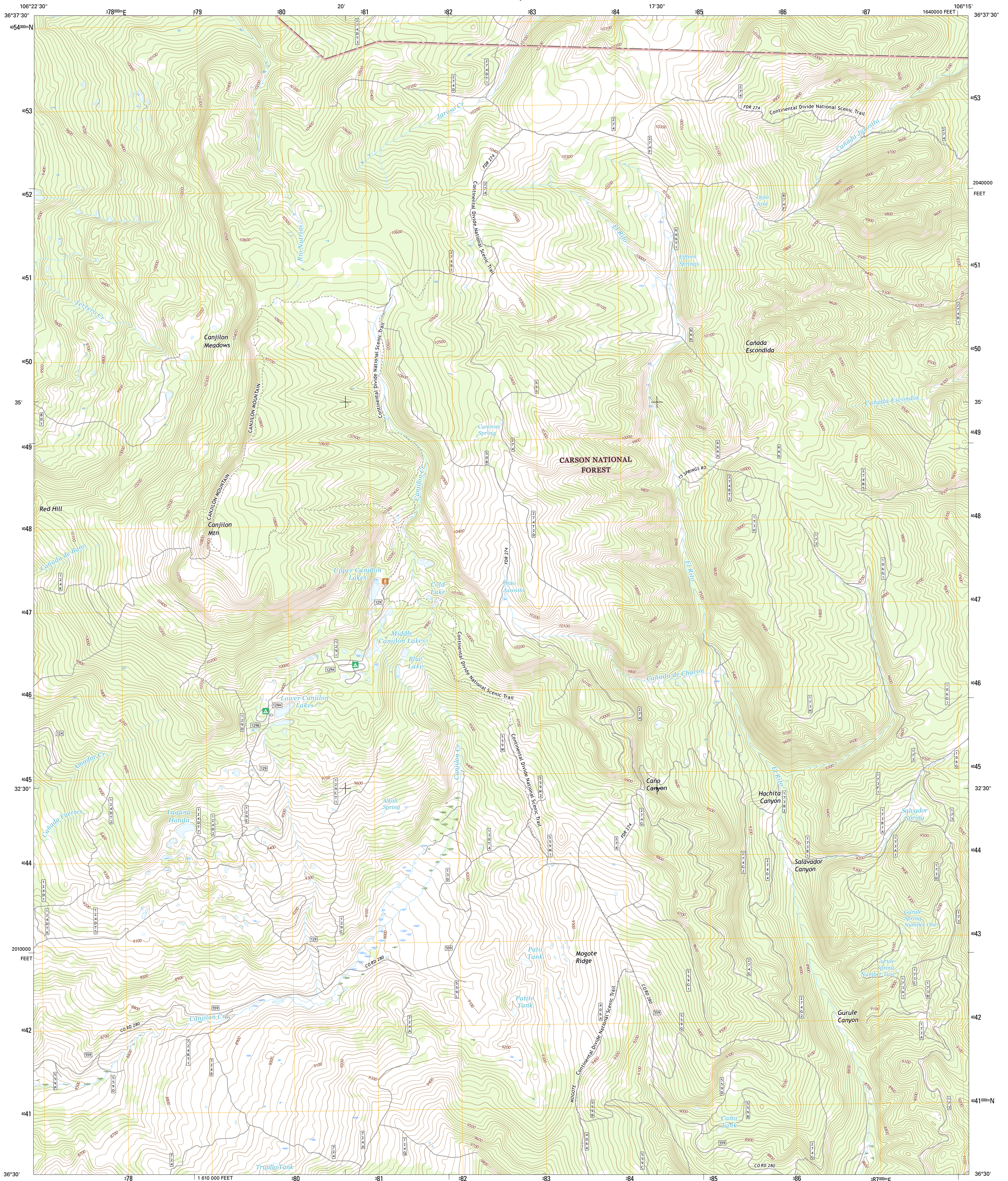




U.S. DEPARTMENT OF THE INTERIOR
U.S. GEOLOGICAL SURVEY



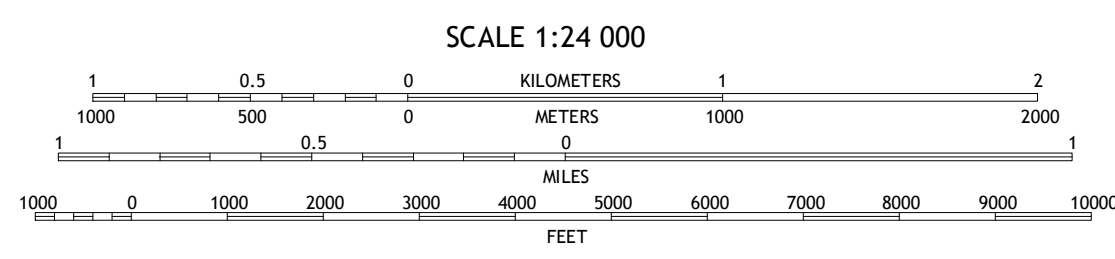
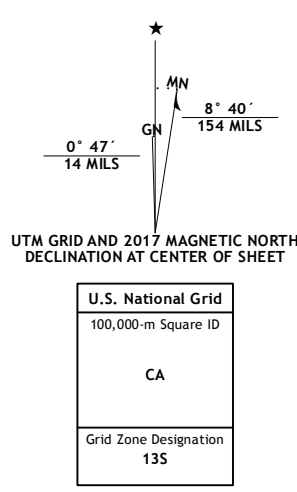
CANJILON MOUNTAIN QUADRANGLE
NEW MEXICO-RIO ARriba CO.
7.5-MINUTE SERIES



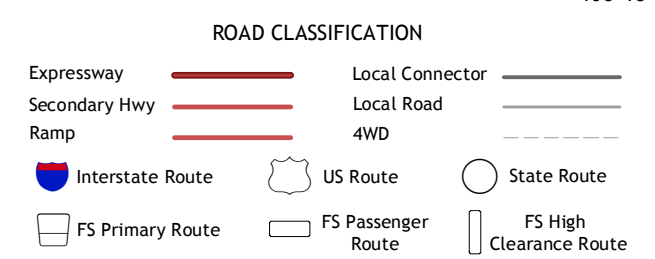
Produced by the United States Geological Survey
North American Datum of 1983 (NAD83)
World Geodetic System of 1984 (WGS84). Projection and
1 000-meter grid: Universal Transverse Mercator, Zone 13S
10 000-foot ticks: New Mexico Coordinate System of 1983
(central zone)

This map is not a legal document. Boundaries may be
generalized for this map scale. Private lands within government
reservations may not be shown. Obtain permission before
entering private lands.

Imagery:.....NAP, October 2014
Roads:.....U.S. Census Bureau, 2015 - 2016
Roads within US Forest Service Lands:.....FS Topo Data
with limited Forest Service updates, 2012 - 2016
Names:.....GNIS, 2016
Hydrography:.....National Hydrography Dataset, 2014
Contours:.....National Elevation Dataset, 2000
Boundaries:.....Multiple sources; see metadata file 1972 - 2016
Public Land Survey System:.....BLM, 2016
Wetlands:.....FWS National Wetlands Inventory 1977 - 2014



CONTOUR INTERVAL 20 FEET
NORTH AMERICAN VERTICAL DATUM OF 1988
This map was produced to conform with the
National Geospatial Program US Topo Product Standard, 2011.
A metadata file associated with this product is draft version 0.6.19



Check with local Forest Service unit
for current travel conditions and restrictions.

1	2	3	1 Penasco Amarillo
4	5	6	2 East Gavilan Canyon
7	8	7	3 Burned Mountain
		8	4 Cebolla
			5 Canon Plaza
			6 Canjilon
			7 Magote Peak
			8 Valle Grande Peak

CANJILON MOUNTAIN, NM
2017

