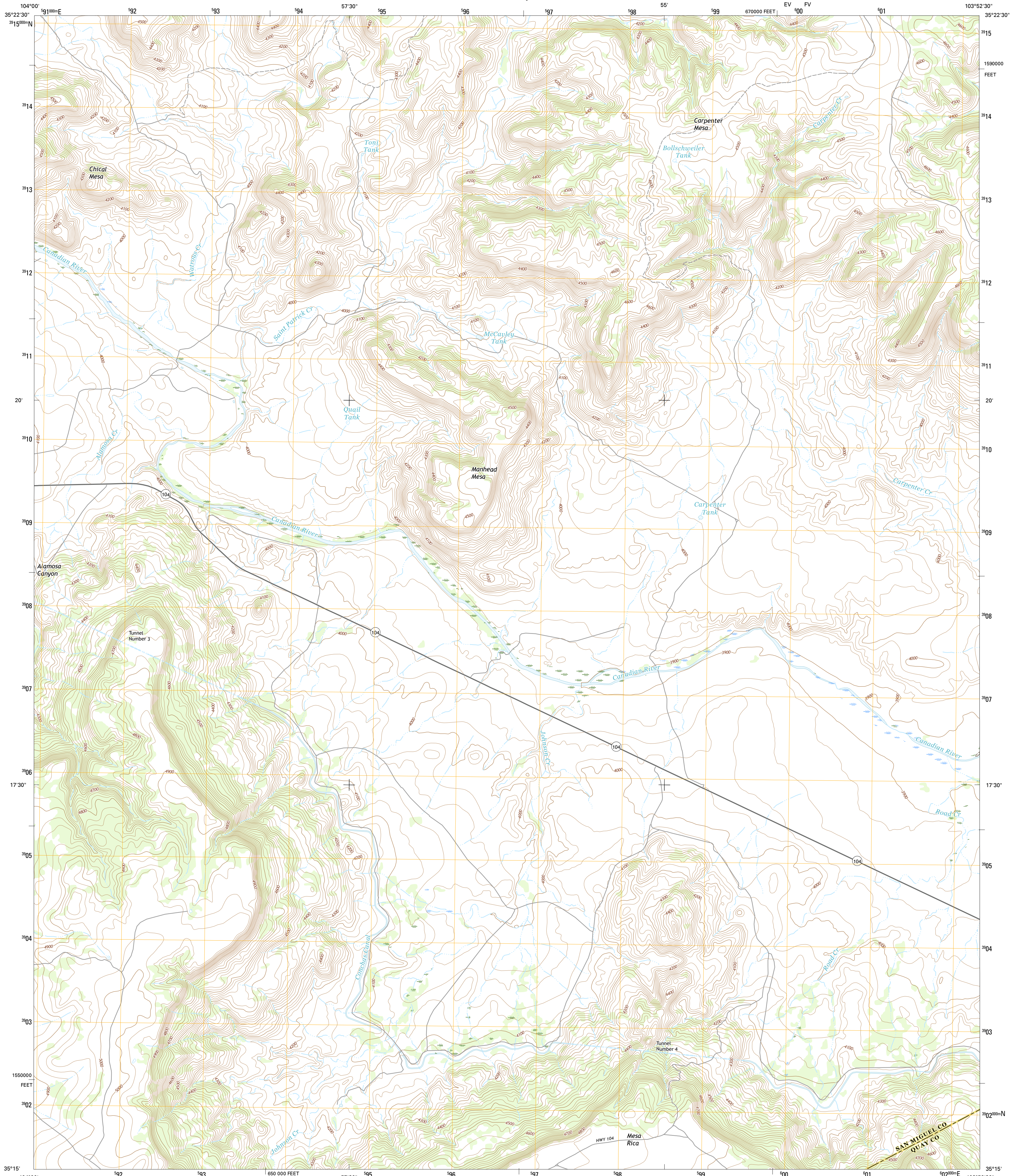




U.S. DEPARTMENT OF THE INTERIOR  
U.S. GEOLOGICAL SURVEY



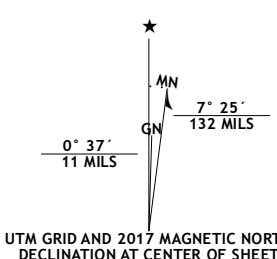
CARPENTER MESA SW QUADRANGLE  
NEW MEXICO  
7.5-MINUTE SERIES



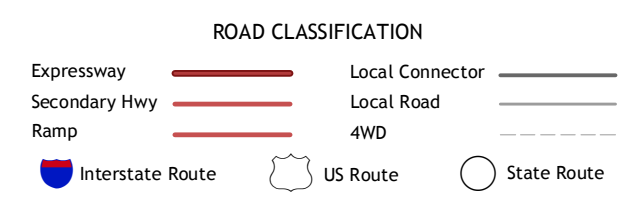
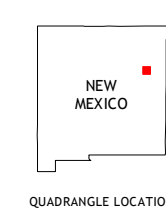
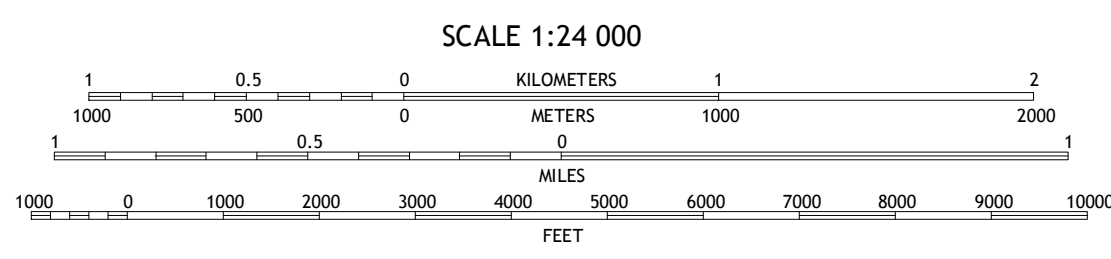
Produced by the United States Geological Survey  
North American Datum of 1983 (NAD83)  
World Geodetic System of 1984 (WGS84). Projection and  
1 000-meter grid: Universal Transverse Mercator, Zone 13S  
10 000-foot ticks: New Mexico Coordinate System of 1983 (east  
zone)

This map is not a legal document. Boundaries may be  
generalized for this map scale. Private lands within government  
reservations may not be shown. Obtain permission before  
entering private lands.

Imagery.....NIP, October 2014  
Roads.....U.S. Census Bureau, 2015 - 2016  
Names.....GNIS, 2016  
Hydrography.....National Hydrography Dataset, 2014  
Contours.....National Elevation Dataset, 1998  
Boundaries.....Multiple sources; see metadata file 1972 - 2016  
Public Land Survey System.....BLM, 2016  
Wetlands.....FWS National Wetlands Inventory 1977 - 2014



U.S. National Grid	100,000-m Square ID
EV	FV
Grid Zone Designation 13S	



CONTOUR INTERVAL 40 FEET  
NORTH AMERICAN VERTICAL DATUM OF 1988

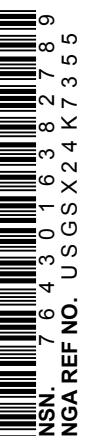
This map was produced to conform with the  
National Geospatial Program US Topo Product Standard, 2011.  
A metadata file associated with this product is draft version 0.6.19

1	2	3
4	5	6
7	8	9

ADJOINING QUADRANGLES

- 1 La Cinta Mesa
- 2 Carpenter Mesa NW
- 3 Medina Mesa
- 4 Monument Point
- 5 Trinchera Creek
- 6 Muntz Canyon
- 7 Cow Canyon
- 8 Liberty Mesa

CARPENTER MESA SW, NM  
2017



NSN 7 56 0 1 6 3 0 2 4 7 3 5  
NGA REF NO. U.S. G.S. X 4 K 73 5