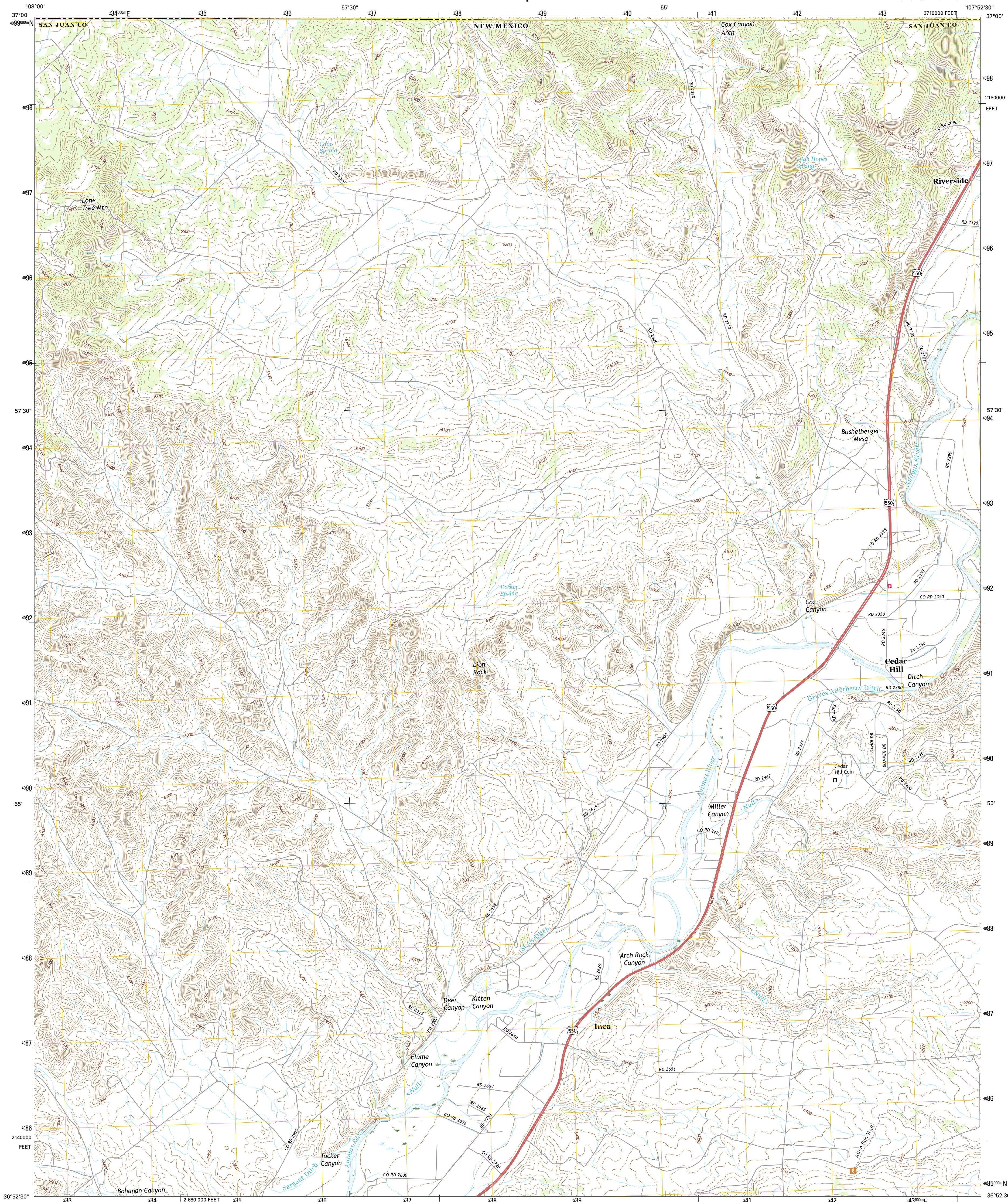




U.S. DEPARTMENT OF THE INTERIOR
U.S. GEOLOGICAL SURVEY



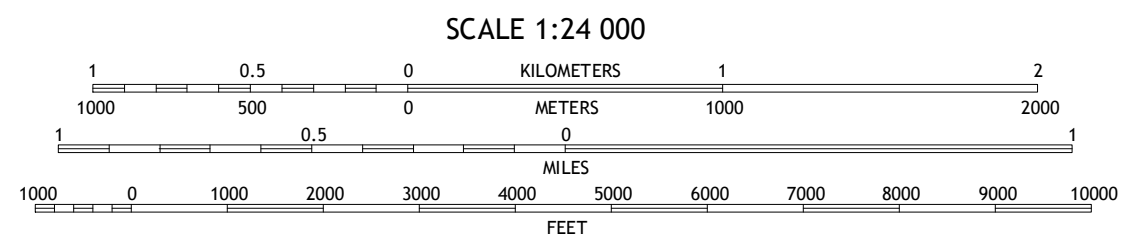
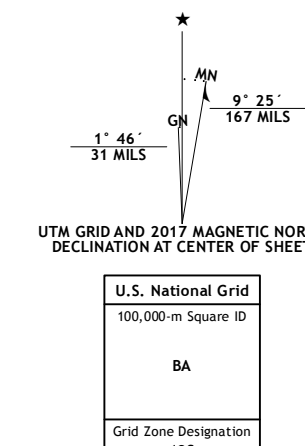
CEDAR HILL QUADRANGLE
NEW MEXICO-SAN JUAN CO.
7.5-MINUTE SERIES



Produced by the United States Geological Survey
North American Datum of 1983 (NAD83)
World Geodetic System of 1984 (WGS84) Projection and
1 000-meter grid; Universal Transverse Mercator, Zone 13S
10 000-foot ticks; New Mexico Coordinate System of 1983 (west zone)

This map is not a legal document. Boundaries may be generalized for this map scale. Private lands within government reservations may not be shown. Obtain permission before entering private lands.

Imagery.....NAIP, November 2015
Roads.....U.S. Census Bureau, 2015-2016
Names.....GNIS, 2016
Hydrography.....National Hydrography Dataset, 2015
Contours.....National Elevation Dataset, 2001
Boundaries.....Multiple sources; see metadata file 1972-2016
Public Land Survey System.....BLM, 2016
Wetlands.....FWS National Wetlands Inventory 1977-2014



CONTOUR INTERVAL 20 FEET
NORTH AMERICAN VERTICAL DATUM OF 1988

This map was produced to conform with the National Geospatial Program US Topo Product Standard, 2011. A metadata file associated with this product is draft version 0.6.19



ROAD CLASSIFICATION

Expressway	Local Connector
Secondary Hwy	Local Road
Ramp	4WD
Interstate Route	US Route
	State Route

ADJOINING QUADRANGLES

1	2	3
4	5	
6	7	8

- 1 Pinkerton Mesa
- 2 Long Mountain
- 3 Bonad Hill
- 4 Adobe Downs Ranch
- 5 Mount Nebo
- 6 Flora Vista
- 7 Jatec
- 8 Turkey

CEDAR HILL, NM
2017

