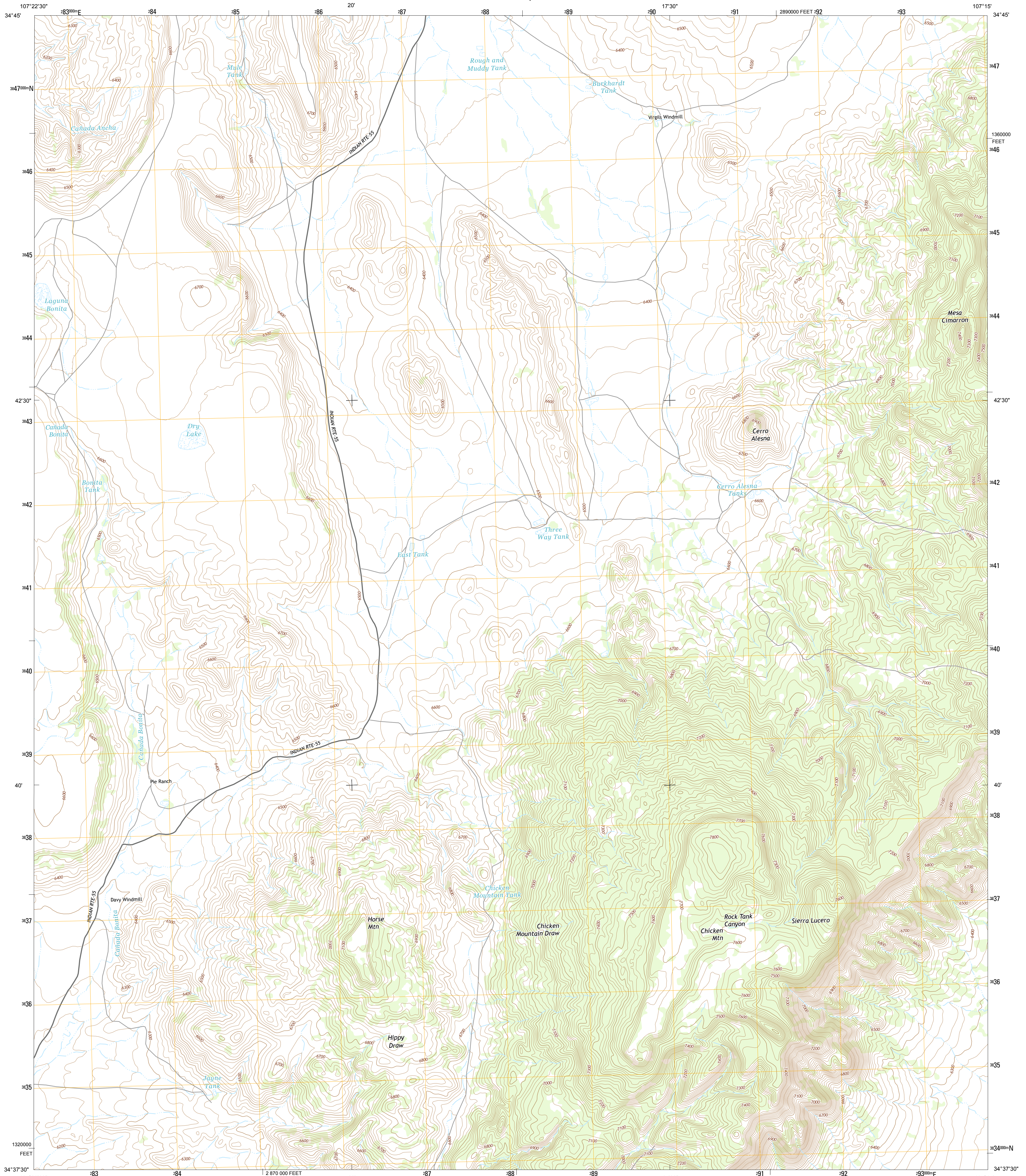




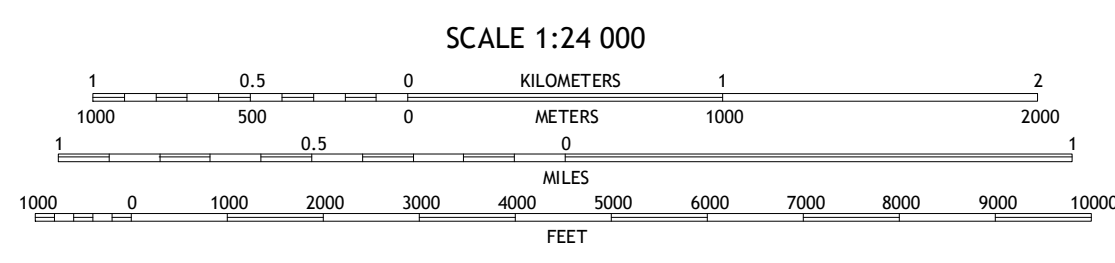
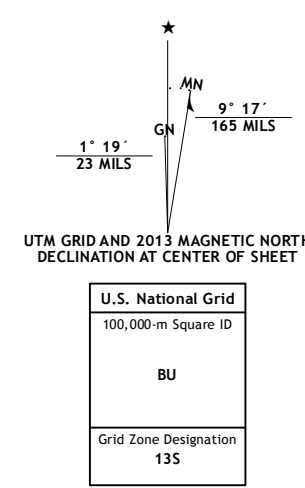
U.S. DEPARTMENT OF THE INTERIOR
U. S. GEOLOGICAL SURVEY



CHICKEN MOUNTAIN QUADRANGLE
NEW MEXICO-CIBOLA CO.
7.5-MINUTE SERIES



Produced by the United States Geological Survey
 North American Datum of 1983 (NAD83)
 World Geodetic System of 1984 (WGS84). Projection and
 1 000-meter grid: Universal Transverse Mercator, Zone 13S
 10 000-foot ticks: New Mexico Coordinate System of 1983 (west
 zone)
 Imagery.....NIP, May 2011
 Roads.....©2006-2013 TomTom
 Names.....National Hydrography Dataset, 2011
 Hydrography.....National Elevation Dataset, 1999
 Contours.....National Elevation Dataset, 1999
 Boundaries.....Census, IBWC, IBC, USGS, 1972 - 2012
 Public Land Survey System.....BLM, 2011



CONTOUR INTERVAL 20 FEET
NORTH AMERICAN VERTICAL DATUM OF 1988

This map was produced to conform with the
National Geospatial Program US Topo Product Standard, 2011.
A metadata file associated with this product is draft version 0.6.15

QUADRANGLE LOCATION

Marmon Ranch	Cerro Verde	White Ridge
Cerro Del Oro	Chicken Mountain	Mesa Gallina
Field Ranch	Puerto de Los Cavadores	Mesa Sarca

ADJOINING 7.5 QUADRANGLES

ROAD CLASSIFICATION

Expressway	Local Connector
Secondary Hwy	Local Road
Ramp	4WD
Interstate Route	US Route
	State Route

CHICKEN MOUNTAIN, NM
2013

