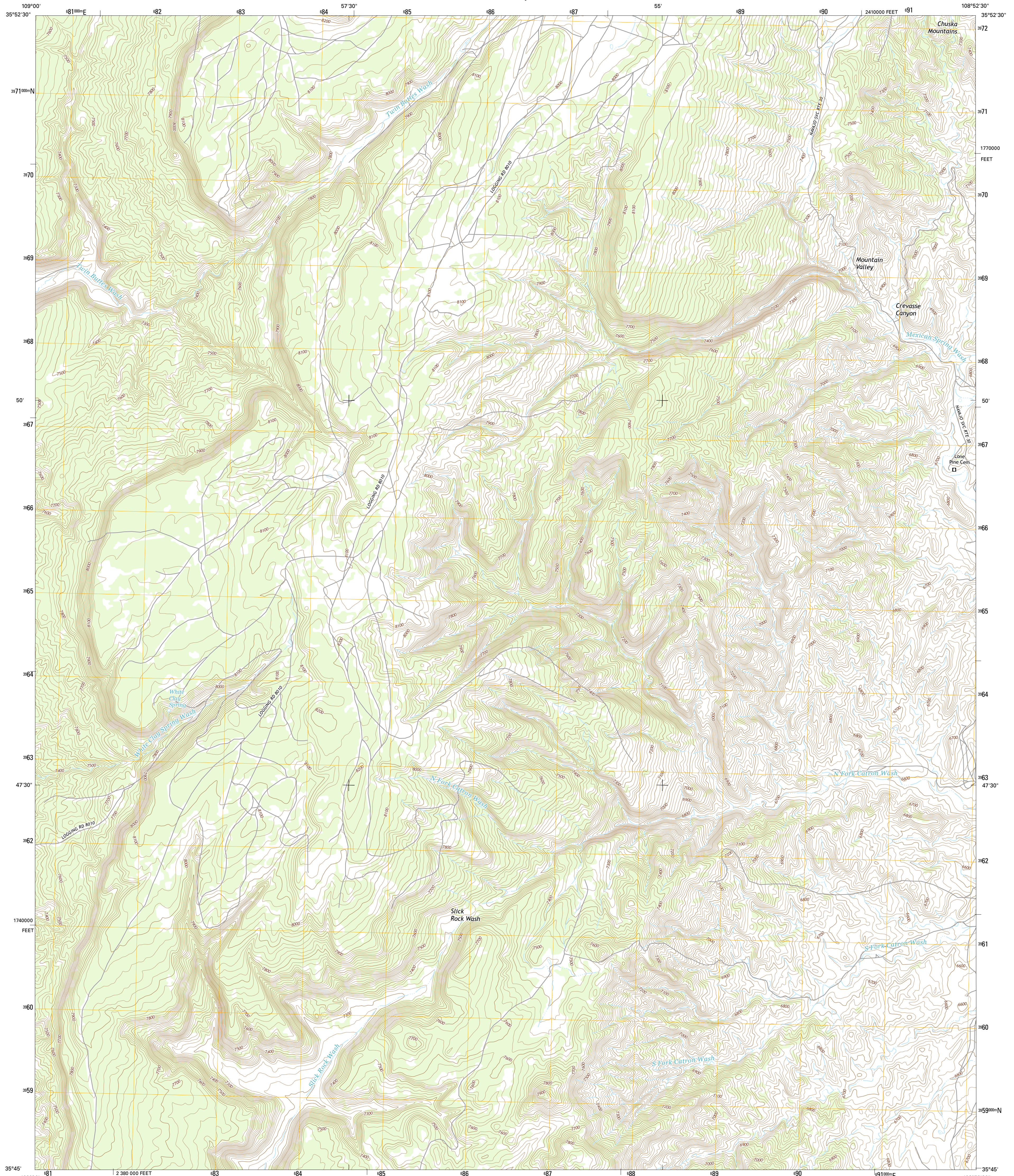




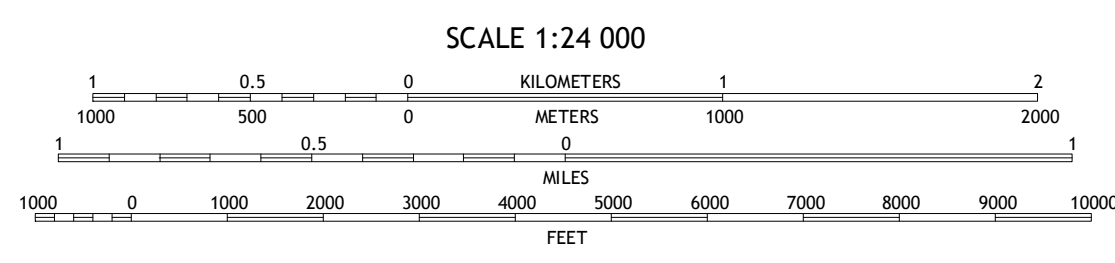
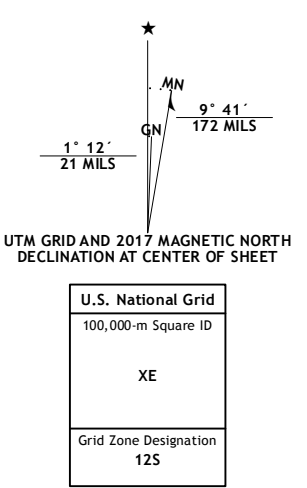
U.S. DEPARTMENT OF THE INTERIOR
U.S. GEOLOGICAL SURVEY



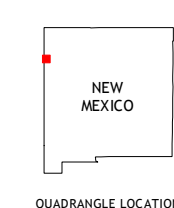
CREVASSE CANYON QUADRANGLE
NEW MEXICO-MCKINLEY CO.
7.5-MINUTE SERIES



Produced by the United States Geological Survey
 North American Datum of 1983 (NAD83)
 World Geodetic System of 1984 (WGS84). Projection and
 1 000-meter grid: Universal Transverse Mercator, Zone 12S
 10 000-foot ticks: New Mexico Coordinate System of 1983 (west
 zone)
 This map is not a legal document. Boundaries may be
 generalized for this map scale. Private lands within government
 reservations may not be shown. Obtain permission before
 entering private lands.
 Imagery.....NAIP, September 2014
 Roads.....U.S. Census Bureau, 2015, 2016
 Names.....GNIS, 2016
 Hydrography.....National Hydrography Dataset, 2014
 Contours.....National Elevation Dataset, 1999
 Boundaries.....Multiple sources; see metadata file 1972_2016
 Public Land Survey System.....BLM, 2016
 Wetlands.....FWS National Wetlands Inventory 1977 - 2014



CONTOUR INTERVAL 20 FEET
 NORTH AMERICAN VERTICAL DATUM OF 1988
 This map was produced to conform with the
 National Geospatial Program US Topo Product Standard, 2011.
 A metadata file associated with this product is draft version 0.6.19



ROAD CLASSIFICATION

Expressway	Local Connector
Secondary Hwy	Local Road
Interstate Route	4WD
US Route	State Route

ADJOINING QUADRANGLES

1	2	3
4	5	6
7	8	

- 1 Buell Park
- 2 Todillo Park
- 3 Chuska Peak
- 4 Fort Defiance
- 5 Tohatchi
- 6 Window Rock
- 7 Tee Bonita School
- 8 Twin Lakes

CREVASSE CANYON, NM
2017

