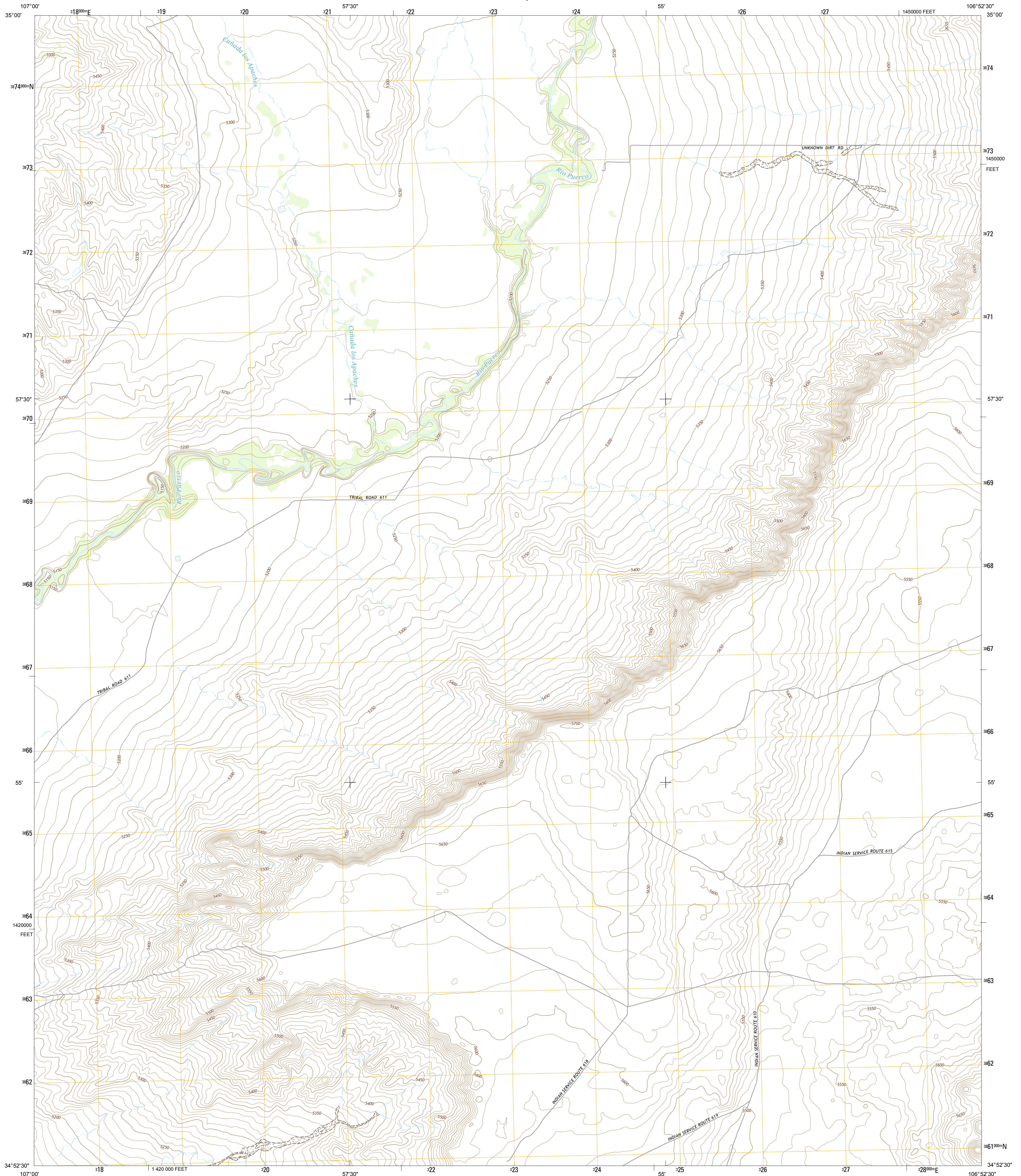




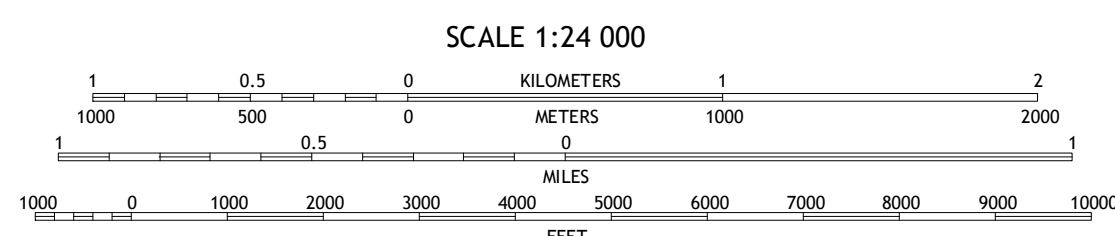
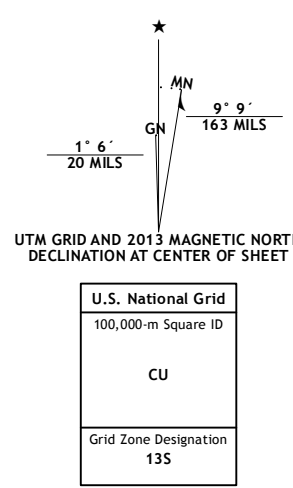
U.S. DEPARTMENT OF THE INTERIOR  
U. S. GEOLOGICAL SURVEY



DALIES NW QUADRANGLE  
NEW MEXICO-BERNALILLO CO.  
7.5-MINUTE SERIES

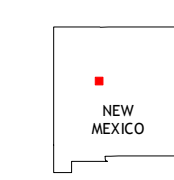


**Produced by the United States Geological Survey**  
 North American Datum of 1983 (NAD83)  
 World Geodetic System of 1984 (WGS84), Projection and  
 1 000-meter grid: Universal Transverse Mercator, Zone 13S  
 10 000-foot ticks: New Mexico Coordinate System of 1983  
 (central zone)  
 This map is not a legal document. Boundaries may be  
 generalized for this map scale. Private lands within government  
 reservations may not be shown. Obtain permission before  
 entering private lands.  
 Imagery.....NAP, May 2011  
 Roads.....©2006-2013 TomTom  
 Names.....GNIS, 2013  
 Hydrography.....National Hydrography Dataset, 2011  
 Contours.....National Elevation Dataset, 1999  
 Boundaries.....Census, IBWC, IBC, USGS, 1972 - 2012  
 Public Land Survey System.....BLM, 2011



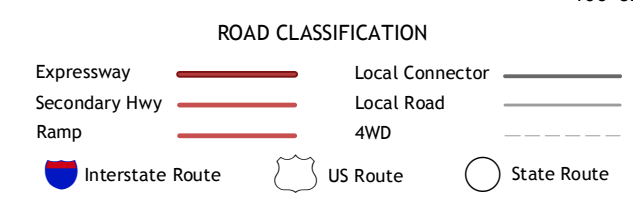
CONTOUR INTERVAL 10 FEET  
NORTH AMERICAN VERTICAL DATUM OF 1988

This map was produced to conform with the  
National Geospatial Program US Topo Product Standard, 2011.  
A metadata file associated with this product is draft version 0.6.15



QUADRANGLE LOCATION

Calencra School	La Mesa Negra	La Mesa Negra SE
South Garcia	Dalies NW	Wind Mesa
South Garcia SE	Rio Puerco	Dalies



DALIES NW, NM  
2013

