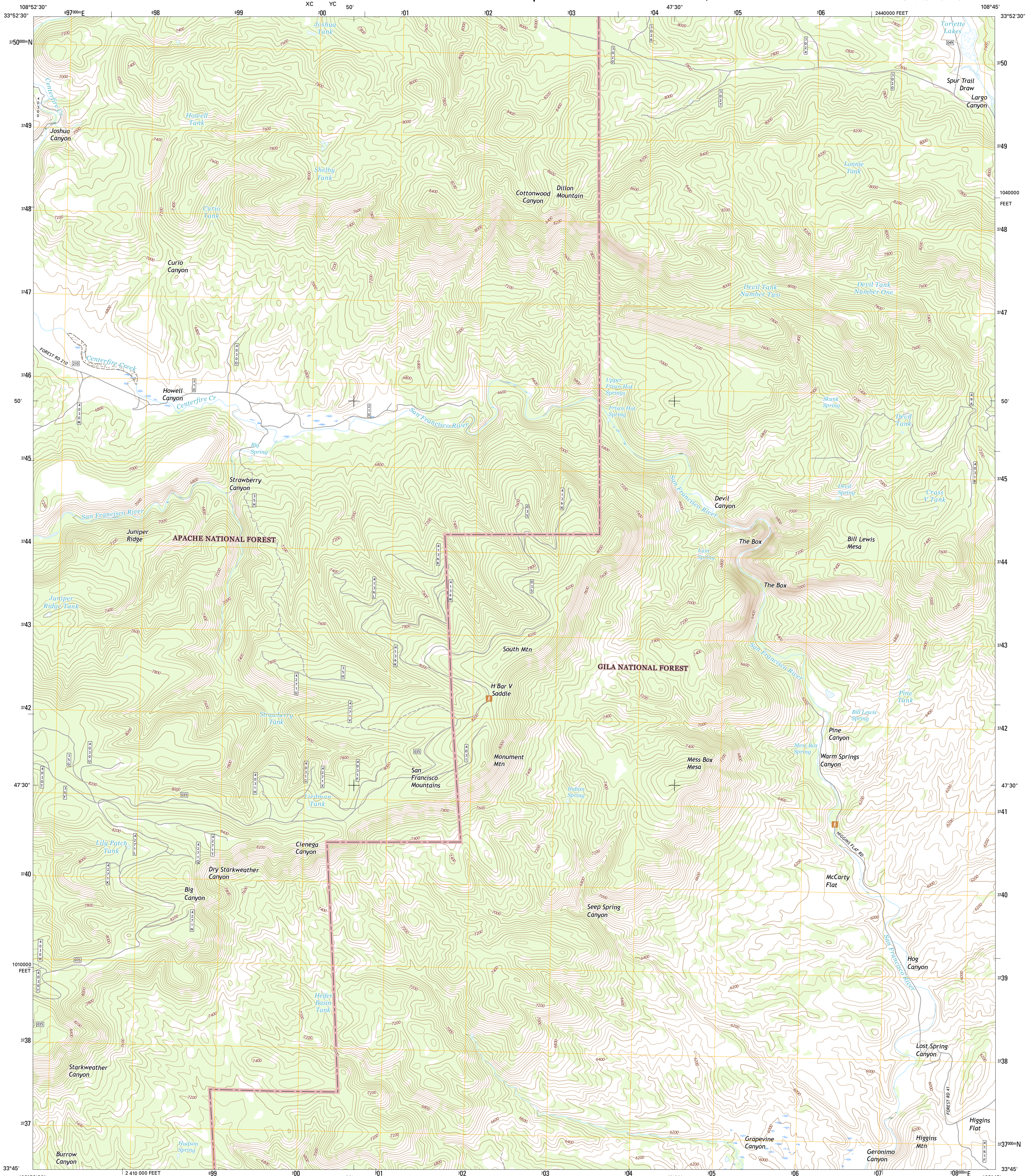




U.S. DEPARTMENT OF THE INTERIOR
U.S. GEOLOGICAL SURVEY



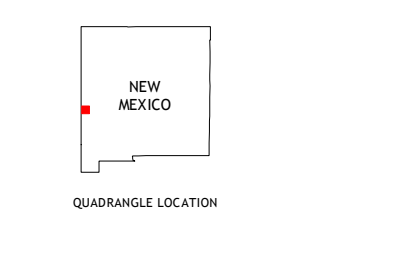
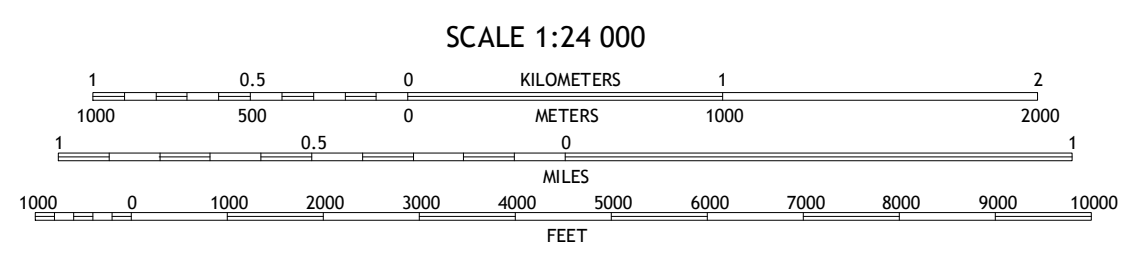
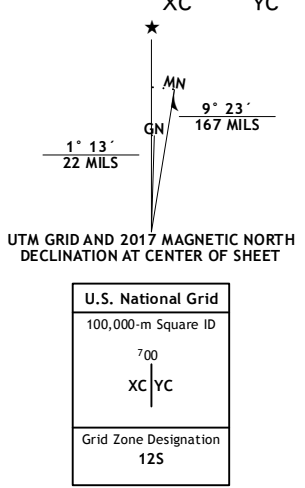
DILLON MOUNTAIN QUADRANGLE
NEW MEXICO-CATRON CO.
7.5-MINUTE SERIES



Produced by the United States Geological Survey
North American Datum of 1983 (NAD83)
World Geodetic System of 1984 (WGS84) Projection and
1 000-meter grid: Universal Transverse Mercator, Zone 12S
10 000-foot ticks: New Mexico Coordinate System of 1983 (west zone)

This map is not a legal document. Boundaries may be generalized for this map scale. Private lands within government reservations may not be shown. Obtain permission before entering private lands.

Imagery:.....NAP, October 2014
Roads:.....U.S. Census Bureau, 2015-2016
Roads within US Forest Service Lands:.....FS Topo Data with limited Forest Service updates, 2012-2016
Names:.....GNIS, 2016
Hydrography:.....National Hydrography Dataset, 2014
Contours:.....National Elevation Dataset, 2000
Boundaries:.....Multiple sources; see metadata file 1972-2016
Public Land Survey System:.....BLM, 2016
Wetlands:.....FWS National Wetlands Inventory 1977-2014



- ROAD CLASSIFICATION
- Expressway
 - Secondary Hwy
 - Interstate Route
 - FS Primary Route
 - Local Connector
 - Local Road
 - 4WD
 - US Route
 - FS Passenger Route
 - FS High Clearance Route
 - State Route
 - FS High Clearance Route
- Check with local Forest Service unit for current travel conditions and restrictions.

1	2	3
4	5	6
7	8	

ADJOINING QUADRANGLES

- 1 Underwood Lake
- 2 Centerfire Bog
- 3 Queens Head
- 4 Luna
- 5 Cruville
- 6 Bull Basin
- 7 Reserve
- 8 Milligan Mountain

DILLON MOUNTAIN, NM
2017

