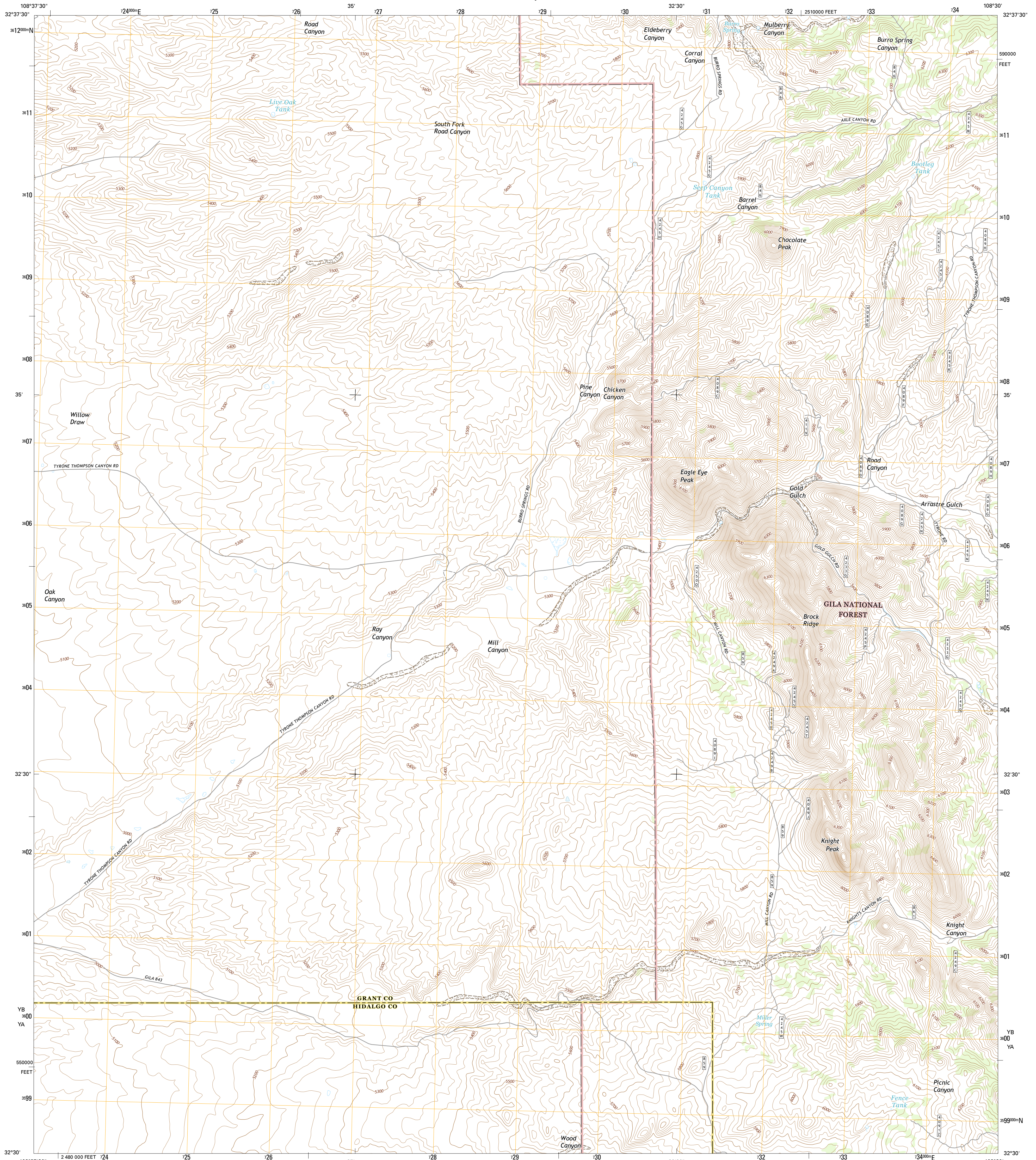




U.S. DEPARTMENT OF THE INTERIOR
U.S. GEOLOGICAL SURVEY



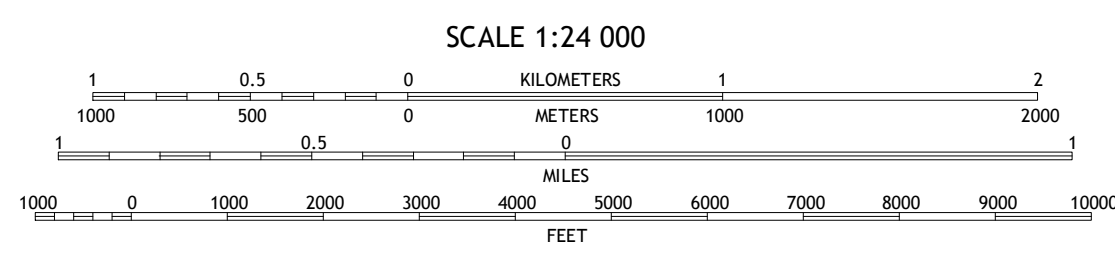
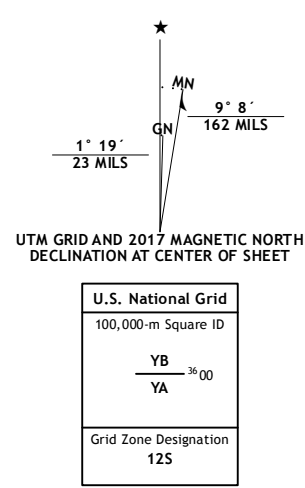
EAGLE EYE PEAK QUADRANGLE
NEW MEXICO
7.5-MINUTE SERIES



Produced by the United States Geological Survey
North American Datum of 1983 (NAD83)
World Geodetic System of 1984 (WGS84). Projection and 1 000-meter grid: Universal Transverse Mercator, Zone 12S
10 000-foot ticks: New Mexico Coordinate System of 1983 (west zone)

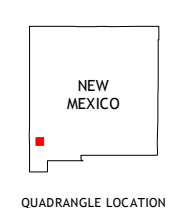
This map is not a legal document. Boundaries may be generalized for this map scale. Private lands within government reservations may not be shown. Obtain permission before entering private lands.

Imagery.....NAIP, October 2014
Roads.....U.S. Census Bureau, 2015 2016
Roads within US Forest Service Lands.....FSTopo Data with limited Forest Service updates, 2012-2016
Names.....GNIS, 2016
Hydrography.....National Hydrography Dataset, 2014
Contours.....National Elevation Dataset, 2001
Boundaries.....Multiple sources; see metadata file 1972-2016
Public Land Survey System.....BLM, 2016
Wetlands.....FWS National Wetlands Inventory 1977-2014



CONTOUR INTERVAL 20 FEET
NORTH AMERICAN VERTICAL DATUM OF 1988

This map was produced to conform with the National Geospatial Program US Topo Product Standard, 2011. A metadata file associated with this product is draft version 0.6.19



ROAD CLASSIFICATION

Expressway	Local Connector
Secondary Hwy	Local Road
Ramp	4WD
Interstate Route	US Route
FS Primary Route	FS Passenger Route
	FS High Clearance Route

Check with local Forest Service unit for current travel conditions and restrictions.

ADJOINING QUADRANGLES

1	2	3
4	5	
6	7	8

- 1 Redrock
- 2 Bullard Peak
- 3 Wind Mountain
- 4 Willow Draw
- 5 Burro Peak
- 6 Culberson Ranch
- 7 Gold Hill
- 8 C Bar Ranch

EAGLE EYE PEAK, NM
2017

