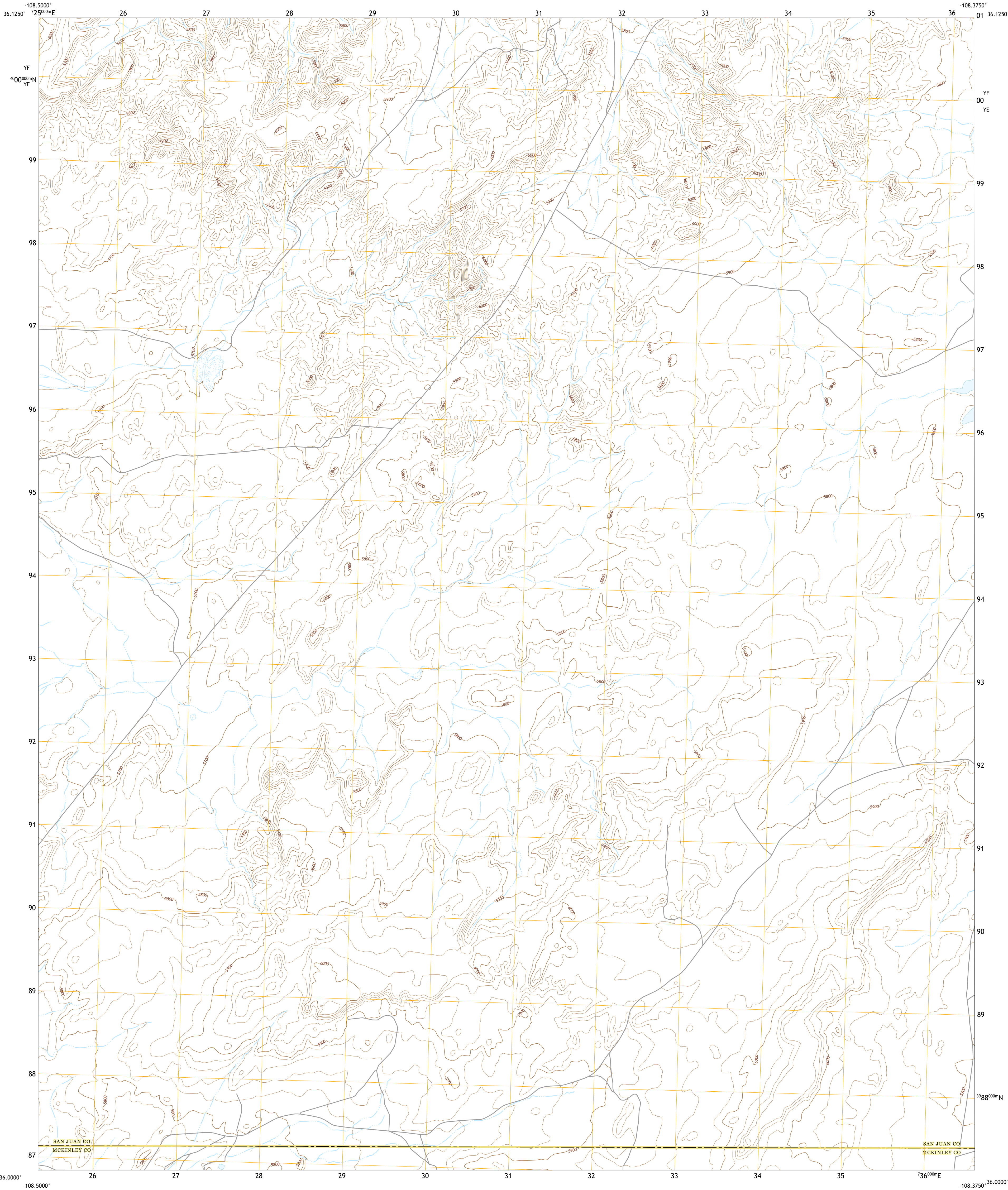




U.S. DEPARTMENT OF THE INTERIOR  
U.S. GEOLOGICAL SURVEY



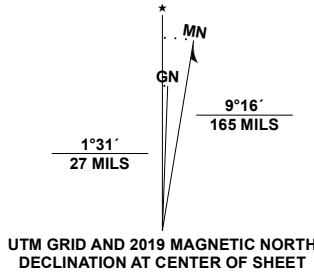
EAST OF GREY HILL SPRING QUADRANGLE  
NEW MEXICO  
7.5-MINUTE SERIES



Produced by the United States Geological Survey

North American Datum of 1983 (NAD83)  
World Geodetic System of 1984 (WGS84) Projection and  
1 000-meter grid/Universal Transverse Mercator, Zone 12S  
This map is not a legal document. Boundaries may be  
generalized for this map scale. Private lands within government  
reservations may not be shown. Obtain permission before  
entering private lands.

Imagery.....NAIP, May 2016 - August 2016  
Roads.....U.S. Census Bureau, 2016  
Names.....GNIS, Not Available  
Hydrography.....National Hydrography Dataset, 1999 - 2019  
Contours.....National Elevation Dataset, 1999  
Boundaries.....Multiple sources; see metadata file 2017 - 2018  
Public Land Survey System.....BLM, 2019  
Wetlands.....FWS National Wetlands Inventory 2005 - 2009



1	2	3
4	5	6
7	8	9

- 1 Great Bend
- 2 East of Great Bend
- 3 Hunter Wash
- 4 Grey Hill Spring
- 5 West of La Vida Mission
- 6 Ear Rock
- 7 Standing Rock NW
- 8 Red Lake Well

- ROAD CLASSIFICATION
- Expressway
  - Secondary Hwy
  - Ramp
  - Interstate Route
  - Local Connector
  - Local Road
  - 4WD
  - US Route
  - State Route

EAST OF GREY HILL SPRING, NM

2020



NSN 7540-01-603-0163 3 8 3 0 5 4  
USGS REF. NO. USGS X 2 4 K 4 4 7 5