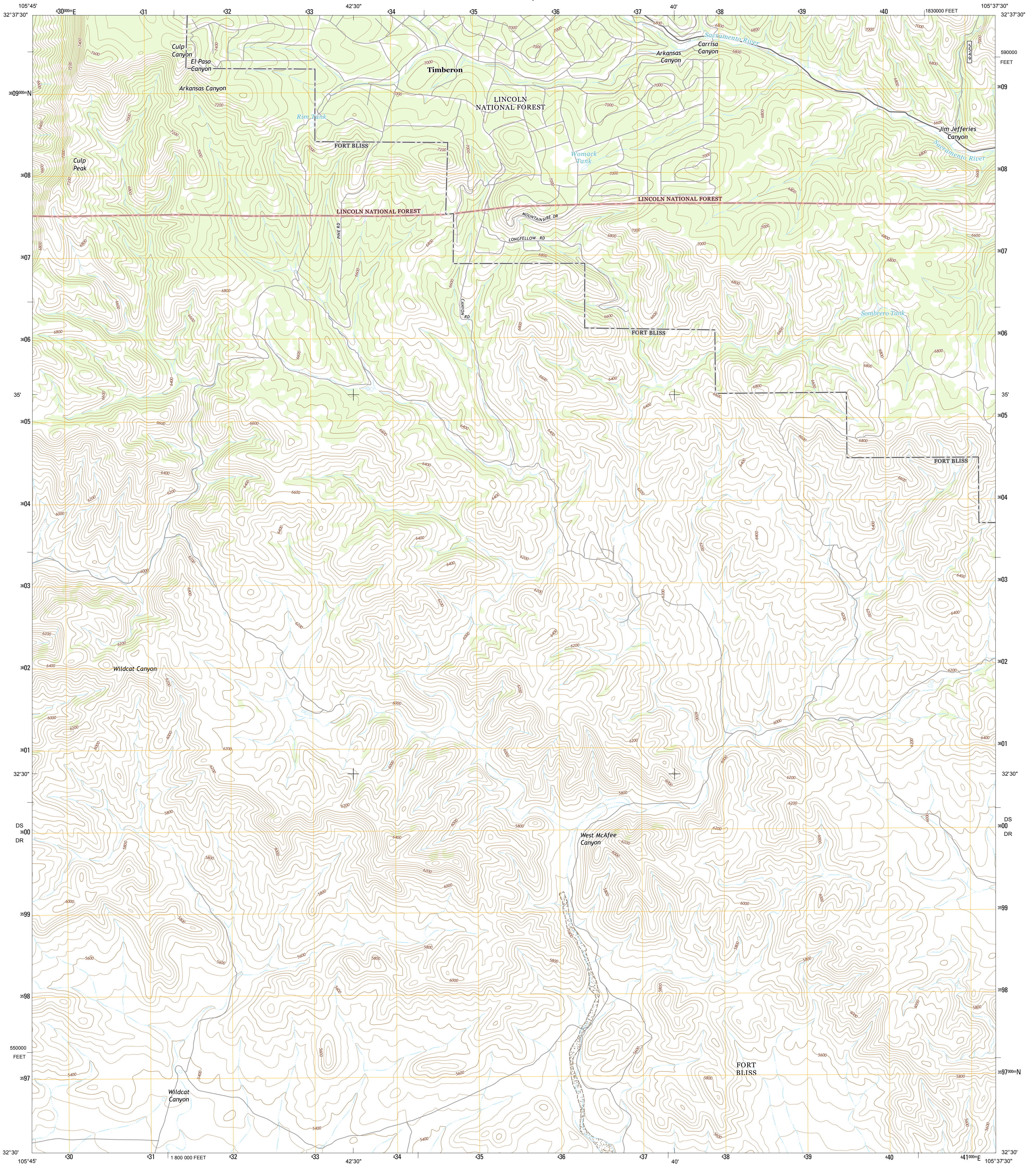




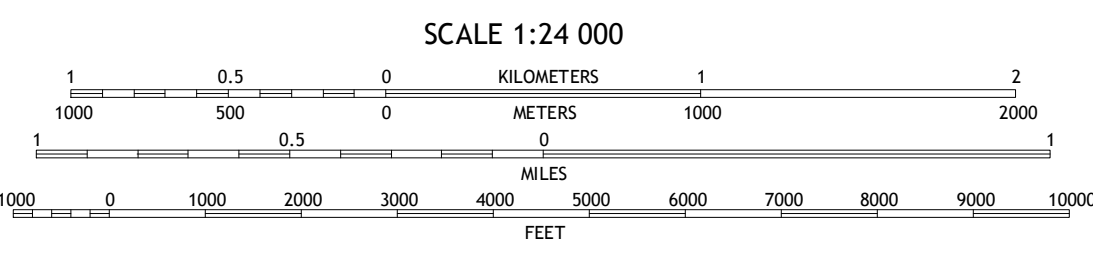
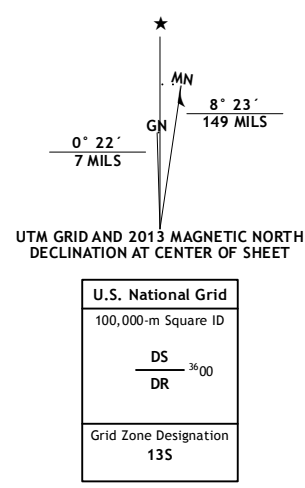
U.S. DEPARTMENT OF THE INTERIOR
U. S. GEOLOGICAL SURVEY



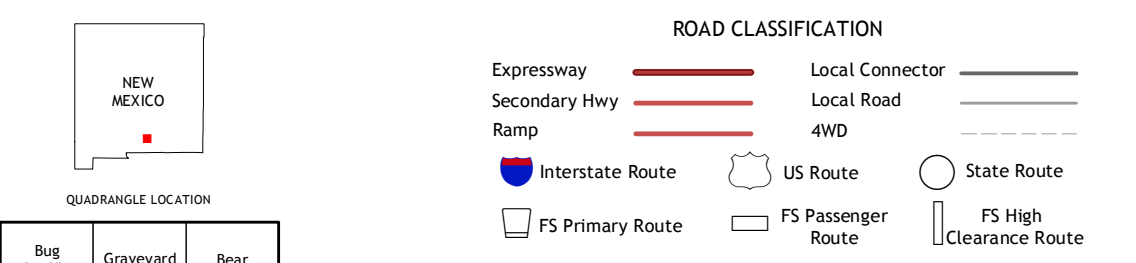
EL PASO CANYON QUADRANGLE
NEW MEXICO-OTERO CO.
7.5-MINUTE SERIES



Produced by the United States Geological Survey
 North American Datum of 1983 (NAD83)
 World Geodetic System of 1984 (WGS84) Projection and
 1 000-meter grid: Universal Transverse Mercator, Zone 13S
 10 000-foot ticks: New Mexico Coordinate System of 1983
 (central zone)
 This map is not a legal document. Boundaries may be
 generalized for this map scale. Private lands within government
 reservations may not be shown. Obtain permission before
 entering private lands.
 Imagery.....NAIP, May 2011
 Roads.....©2006-2013 TomTom
 Roads within US Forest Service Lands.....FSTopo Data
 with limited Forest Service updates, 2013
 Names.....GNIS, 2013
 Hydrography.....National Hydrography Dataset, 2011
 Contours.....National Elevation Dataset, 2002
 Boundaries.....Census, IBWC, IBC, USGS, 1972 - 2012
 Public Land Survey System.....BLM, 2011



CONTOUR INTERVAL 40 FEET
NORTH AMERICAN VERTICAL DATUM OF 1988
 This map was produced to conform with the
 National Geospatial Program US Topo Product Standard, 2011.
 A metadata file associated with this product is draft version 0.6.15



EL PASO CANYON, NM
2013

