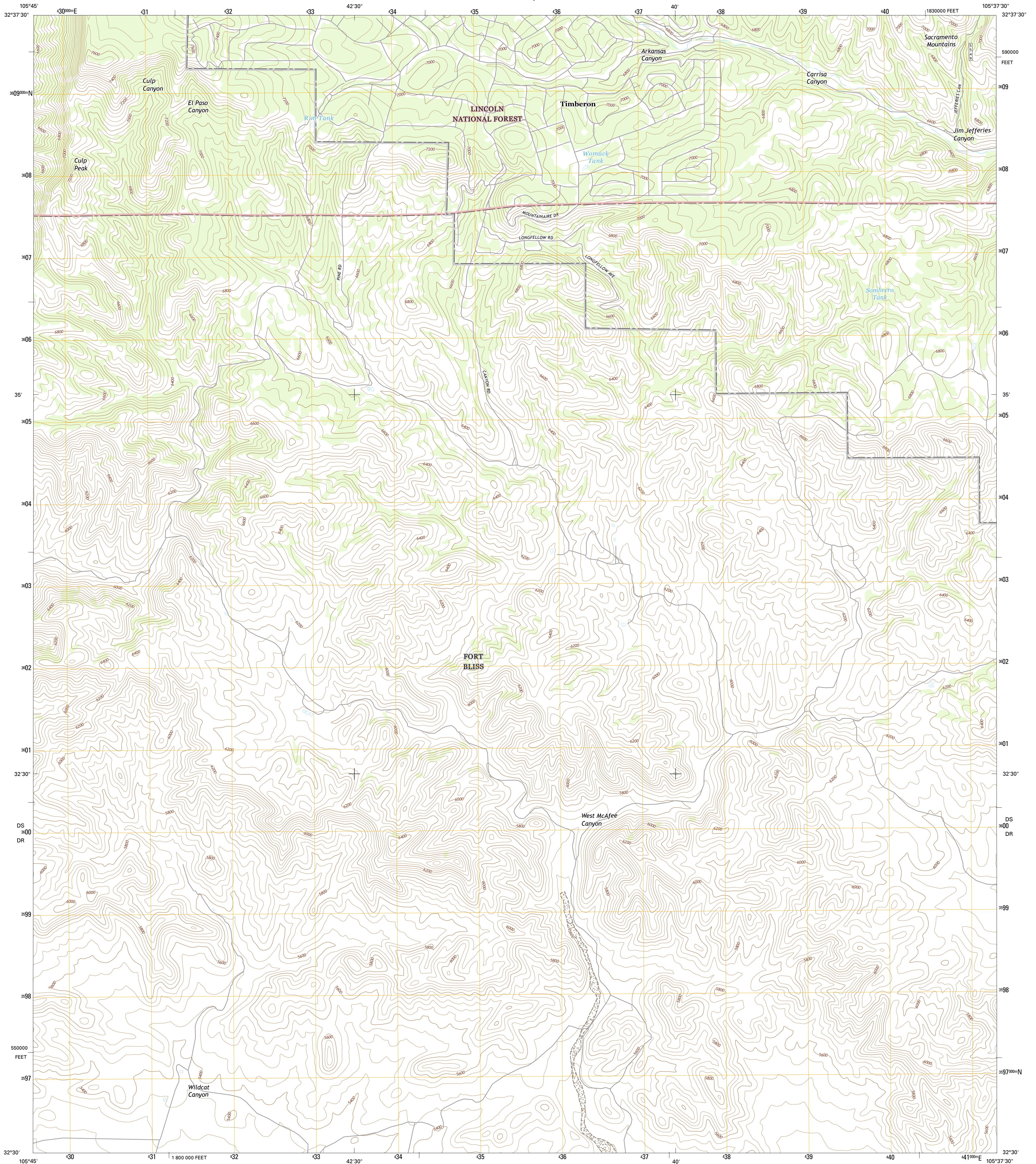




U.S. DEPARTMENT OF THE INTERIOR
U.S. GEOLOGICAL SURVEY



EL PASO CANYON QUADRANGLE
NEW MEXICO-OTERO CO.
7.5-MINUTE SERIES

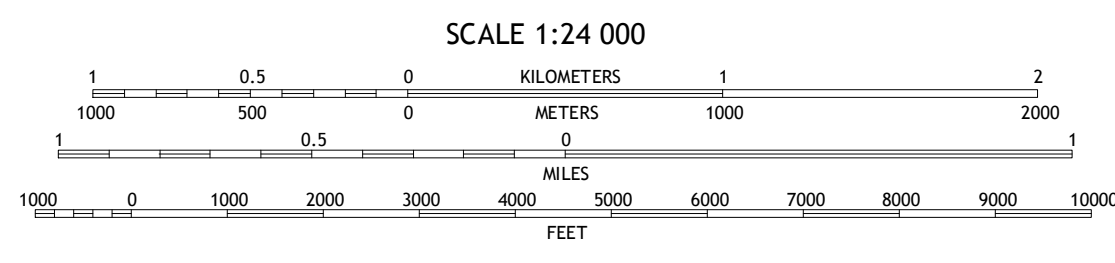
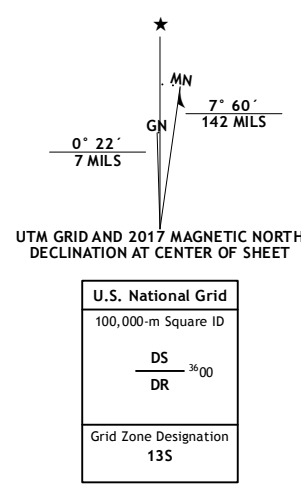


Produced by the United States Geological Survey

North American Datum of 1983 (NAD83)
World Geodetic System of 1984 (WGS84) Projection and
1 000-meter grid: Universal Transverse Mercator, Zone 13S
10 000-foot ticks: New Mexico Coordinate System of 1983
(central zone)

This map is not a legal document. Boundaries may be
generalized for this map scale. Private lands within government
reservations may not be shown. Obtain permission before
entering private lands.

Imagery.....NIP, October 2014
Roads.....U.S. Census Bureau, 2015 2016
Roads within US Forest Service Lands.....FSTopo Data
with limited Forest Service updates, 2012-2016
Names.....GNIS, 2016
Hydrography.....National Hydrography Dataset, 2014
Contours.....National Elevation Dataset, 2002
Boundaries.....Multiple sources; see metadata file 1972-2016
Public Land Survey System.....BLM, 2016
Wetlands.....FWS National Wetlands Inventory 1977-2014



CONTOUR INTERVAL 40 FEET
NORTH AMERICAN VERTICAL DATUM OF 1988

This map was produced to conform with the
National Geospatial Program US Topo Product Standard, 2011.
A metadata file associated with this product is draft version 0.6.19



ROAD CLASSIFICATION

Expressway	Local Connector
Secondary Hwy	Local Road
Ramp	4WD
Interstate Route	US Route
FS Primary Route	FS Passenger Route
	FS High Route
	Clearance Route

Check with local Forest Service unit
for current travel conditions and restrictions.

ADJOINING QUADRANGLES

1	2	3
4	5	6
7	8	

1 Bug Scuffle Canyon
2 Graveyard Canyon
3 Bear Spring
4 Culp Canyon
5 Surveyors Canyon
6 Otero Mesa North
7 El Paso Draw
8 Sixteen Canyon

EL PASO CANYON, NM
2017

