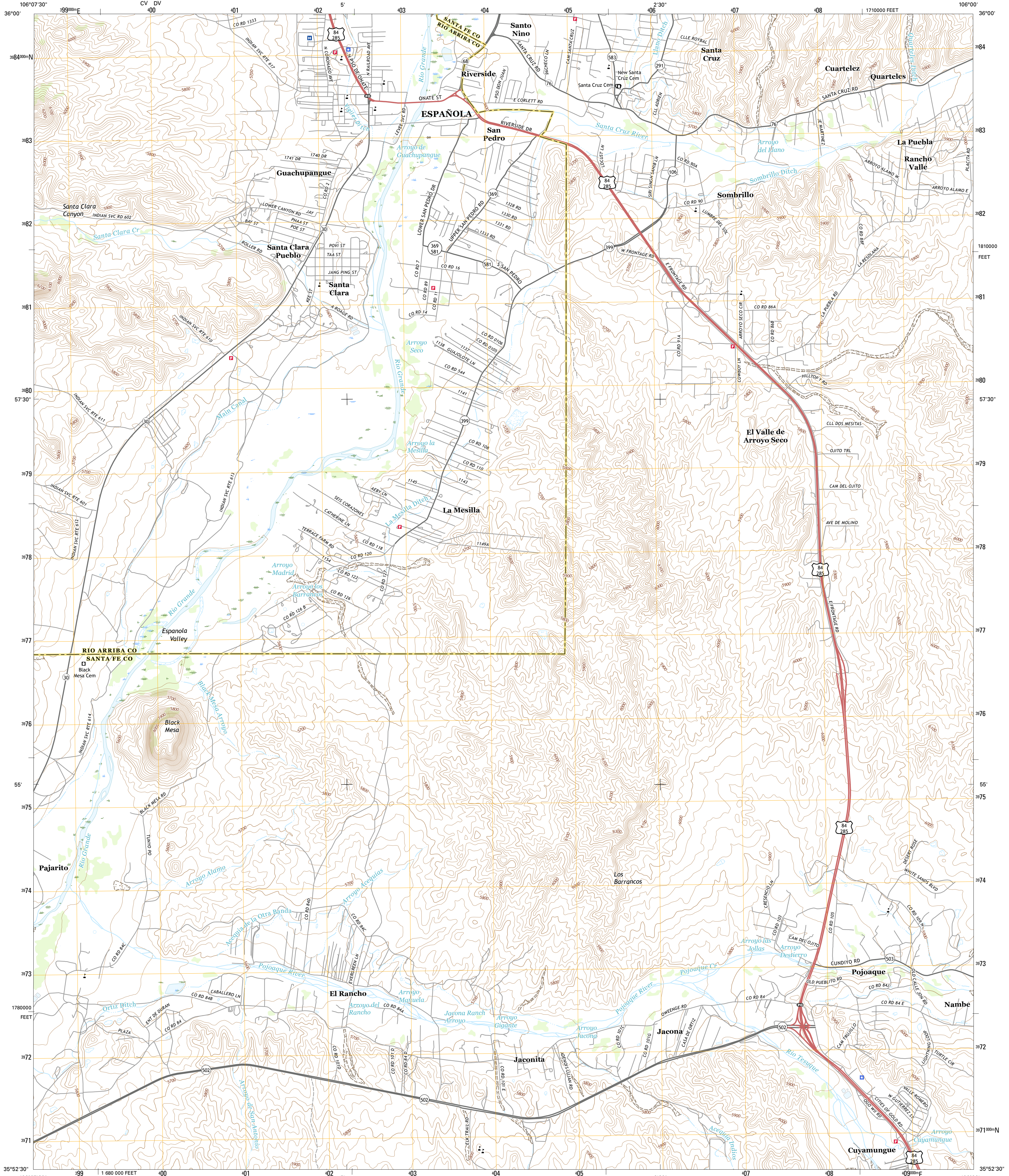




U.S. DEPARTMENT OF THE INTERIOR
U.S. GEOLOGICAL SURVEY



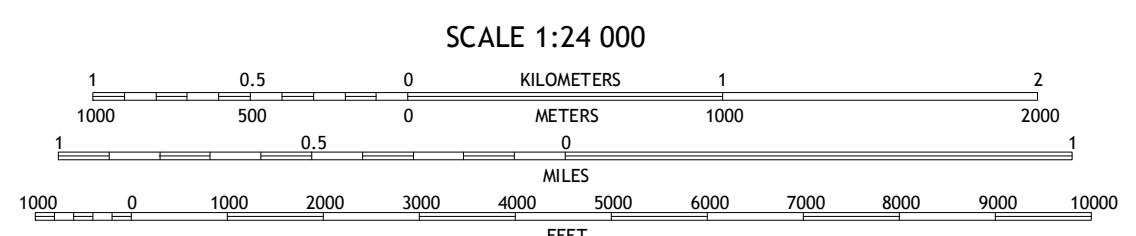
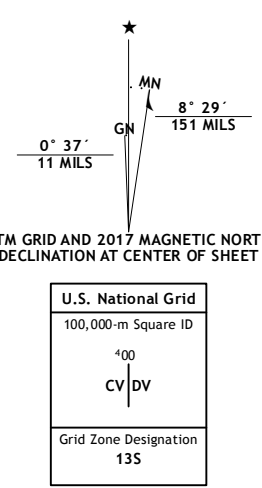
ESPAÑOLA QUADRANGLE
NEW MEXICO
7.5-MINUTE SERIES



Produced by the United States Geological Survey
North American Datum of 1983 (NAD83)
World Geodetic System of 1984 (WGS84); Projection and
1 000-meter grid; Universal Transverse Mercator, Zone 13S
10 000-foot ticks: New Mexico Coordinate System of 1983
(central zone)

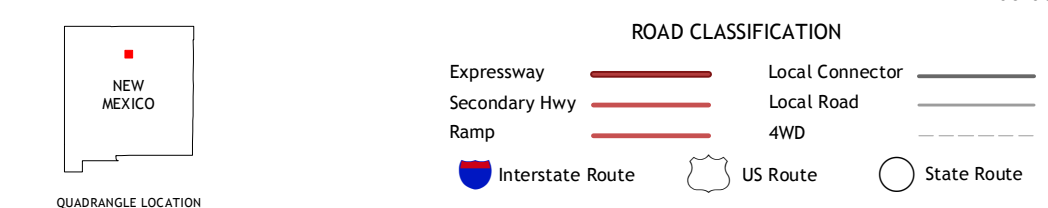
This map is not a legal document. Boundaries may be
generalized for this map scale. Private lands within government
reservations may not be shown. Obtain permission before
entering private lands.

Imagery:.....NAIP, October 2014
Names:.....U.S. Census Bureau, 2015 - 2016
Hydrography:.....National Hydrography Dataset, 2014
Contours:.....National Elevation Dataset, 1999
Boundaries:.....Multiple sources; see metadata file 1972 - 2016
Public Land Survey System:.....BLM, 2016
Wetlands:.....FWS National Wetlands Inventory 1977 - 2014



CONTOUR INTERVAL 20 FEET
NORTH AMERICAN VERTICAL DATUM OF 1988

This map was produced to conform with the
National Geospatial Program US Topo Product Standard, 2011.
A metadata file associated with this product is draft version 0.6.19



1	2	3
4	5	6
7	8	

ADJOINING QUADRANGLES

- Chili
- San Juan Pueblo
- Chimayo
- Puye
- Cundiyo
- White Rock
- Horseshoe Ranch
- Tesuque

ESPAÑOLA, NM
2017

