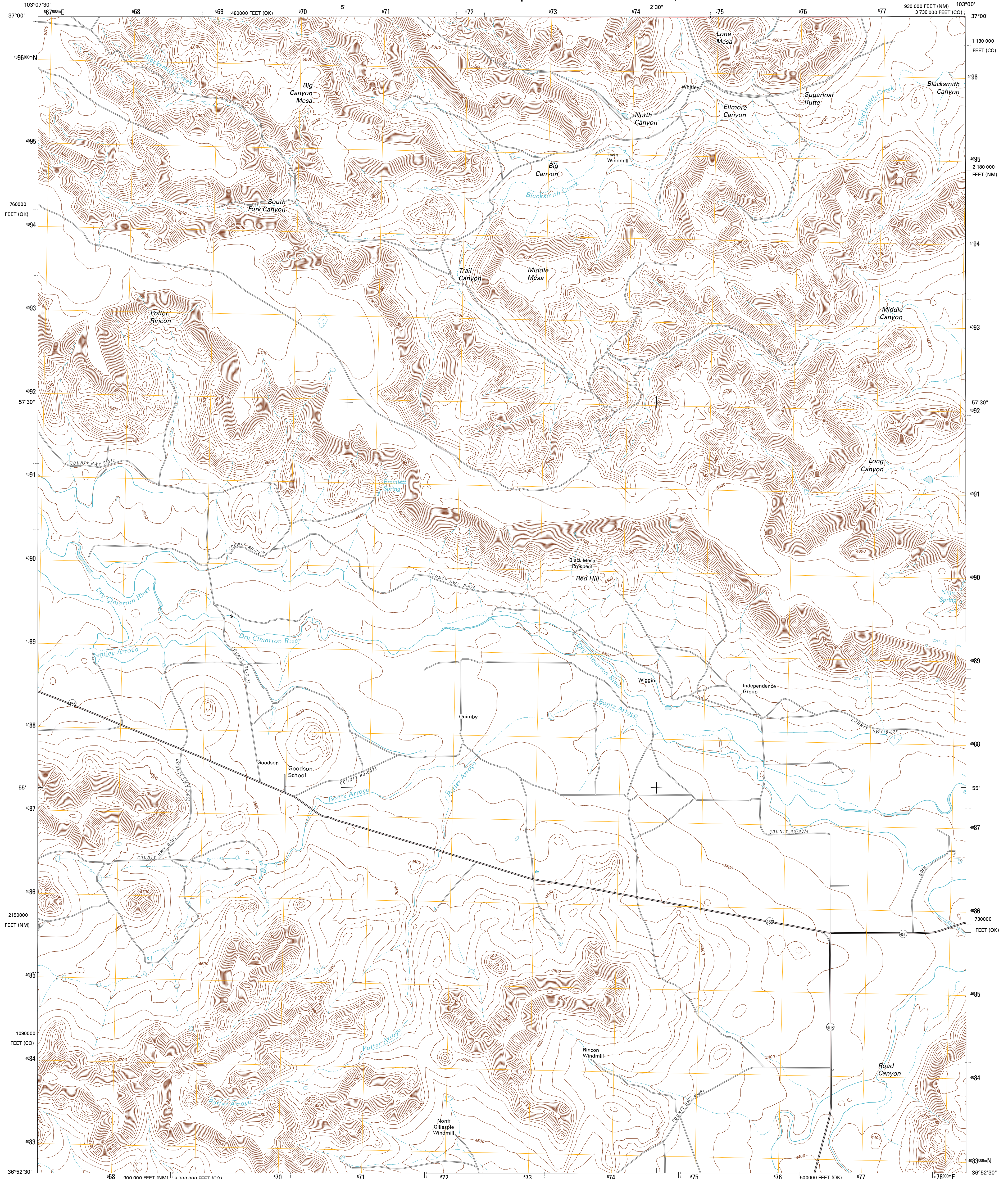




U.S. DEPARTMENT OF THE INTERIOR  
U. S. GEOLOGICAL SURVEY

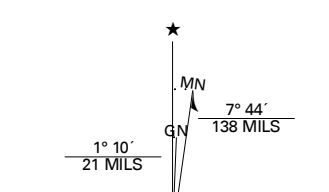


GOODSON SCHOOL QUADRANGLE  
NEW MEXICO-OKLAHOMA-COLORADO  
7.5-MINUTE SERIES

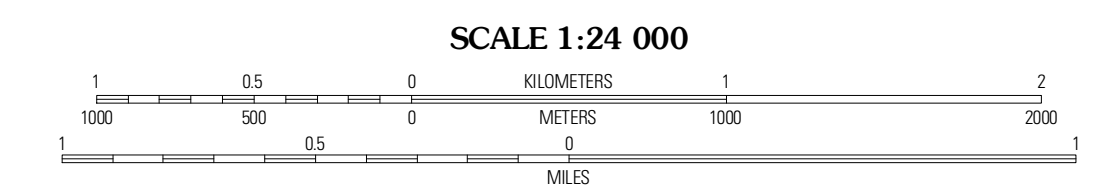


Produced by the United States Geological Survey  
North American Datum of 1983 (NAD83)  
World Geodetic System of 1984 (WGS84). Projection and  
1 000-meter grid: Universal Transverse Mercator, Zone 13S  
10 000-foot ticks: New Mexico Coordinate System of 1983  
(east zone), Oklahoma Coordinate System of 1983 (north  
zone), Colorado Coordinate System of 1983 (south zone)

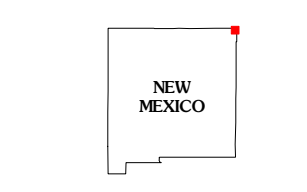
Imagery:.....NAIP, May 2009 - June 2009  
Roads:.....©2006-2010 Tele Atlas  
Roads within US Forest Service Lands:.....FS Topo Data  
with limited Forest Service updates, 2009  
Names:.....GNIS, 2010  
Hydrography:.....National Hydrography Dataset, 2009  
Contours:.....National Elevation Dataset, 2002



U.S. National Grid
100,000-m Square ID
FA
Grid Zone Designation
13S



CONTOUR INTERVAL 20 FEET  
NORTH AMERICAN VERTICAL DATUM OF 1988  
This map was produced to conform with version 0.5.10 of the  
draft USGS Standards for 7.5-Minute Quadrangle Maps.  
A metadata file associated with this product is draft version 0.5.12



QUADRANGLE LOCATION

Furnish Canyon West	Furnish Canyon East	Big Hole Canyon
Wedding Cake Butte	Goodson School	Kenton
Alencio	Greendukey Canyon	Kenton SW

**ROAD CLASSIFICATION**

Interstate Route	State Route	Local Road
US Route	4WD	FS High Clearance Route
Ramp	US Route	FS Passenger Route
FS Primary Route	FS Passenger Route	FS High Clearance Route

Check with local Forest Service unit for current travel conditions and restrictions.

GOODSON SCHOOL, NM-OK-CO  
2011

ADJOINING 7.5 QUADRANGLES