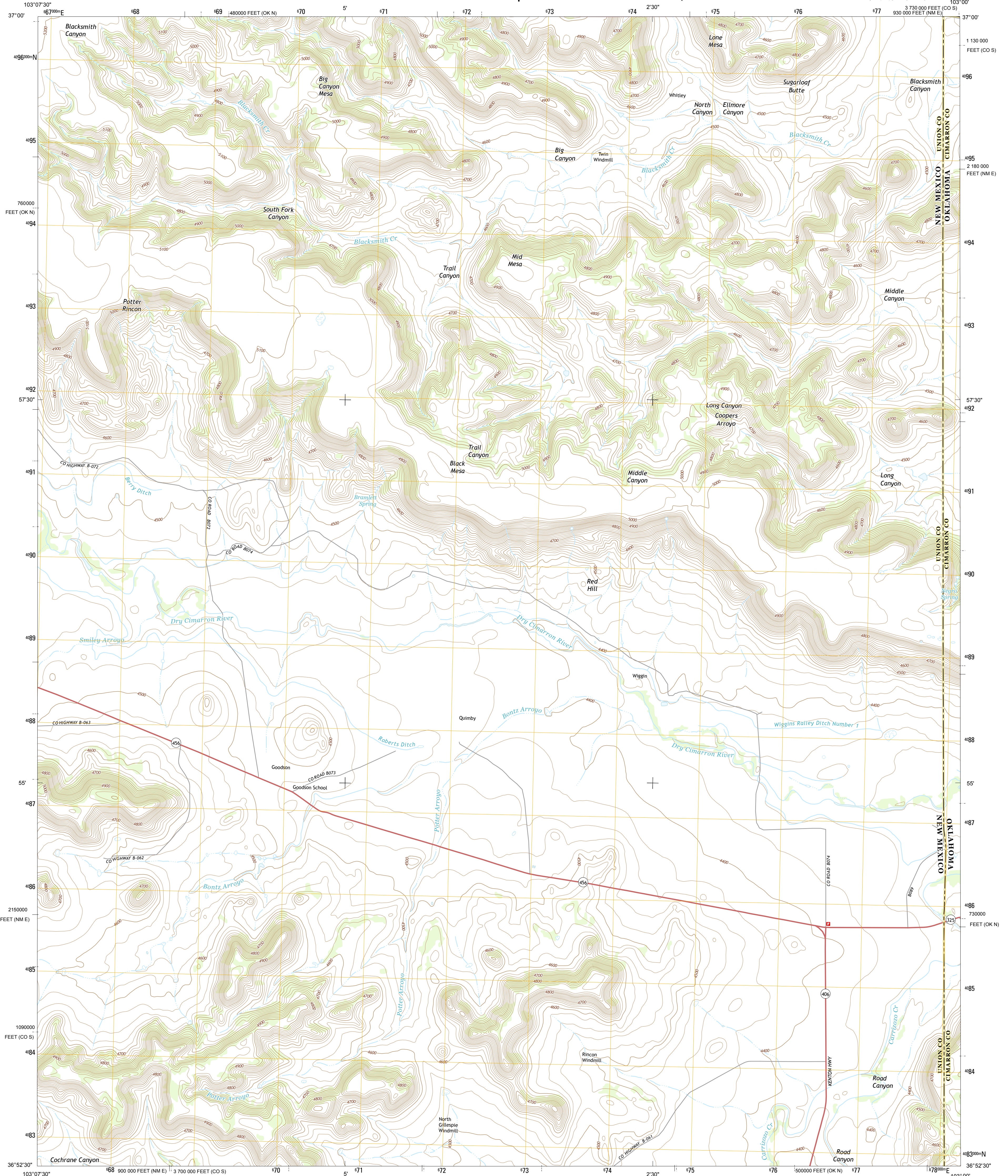




U.S. DEPARTMENT OF THE INTERIOR  
U. S. GEOLOGICAL SURVEY



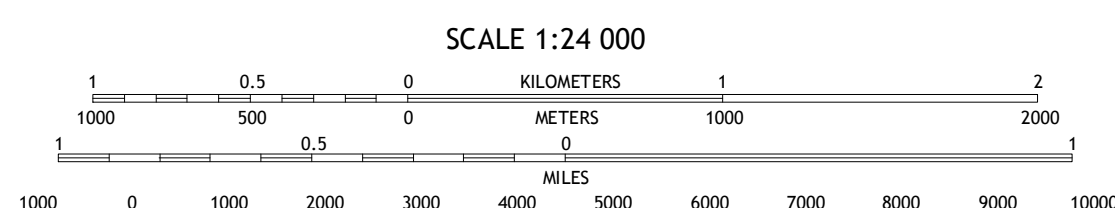
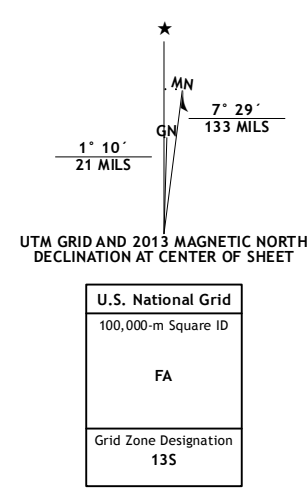
GOODSON SCHOOL QUADRANGLE  
NEW MEXICO-OKLAHOMA-COLORADO  
7.5-MINUTE SERIES



**Produced by the United States Geological Survey**  
North American Datum of 1983 (NAD83)  
World Geodetic System of 1984 (WGS84) Projection and  
1 000-meter grid: Universal Transverse Mercator, Zone 13S  
10 000-foot ticks: New Mexico Coordinate System of 1983 (east zone), Oklahoma Coordinate System of 1983 (north zone), Colorado Coordinate System of 1983 (south zone)

This map is not a legal document. Boundaries may be generalized for this map scale. Private lands within government reservations may not be shown. Obtain permission before.

Imagery: NAIIP, May 2011  
Roads: ©2006-2013 TomTom  
Roads within US Forest Service Lands: FSTopo Data with limited Forest Service updates, 2013  
Names: GNIS, 2013  
Hydrography: National Hydrography Dataset, 2011  
Contours: National Elevation Dataset, 2002  
Boundaries: Census, IBWC, USGS, 1972 - 2012  
Public Land Survey System: BLM, 2011



CONTOUR INTERVAL 20 FEET  
NORTH AMERICAN VERTICAL DATUM OF 1988

This map was produced to conform with the National Geospatial Program US Topo Product Standard, 2011. A metadata file associated with this product is draft version 0.6.15

**ROAD CLASSIFICATION**

- Expressway
- Secondary Hwy
- Interstate Route
- FS Primary Route
- Local Connector
- Local Road
- 4WD
- US Route
- FS Passenger Route
- FS High Clearance Route
- State Route

Check with local Forest Service unit for current travel conditions and restrictions.

**QUADRANGLE LOCATION**

Furnish Canyon West	Furnish Canyon East	Big Hole Canyon
Wedding Cake Butte	Goodson School	Kenton
Atencio	Greendale Canyon	Kenton SW

ADJOINING 7.5 QUADRANGLES

**GOODSON SCHOOL, NM-OK-CO**  
2013



NSN 7-643-010-322-2  
NRA REF NO. USGS X 4 K1 773 4