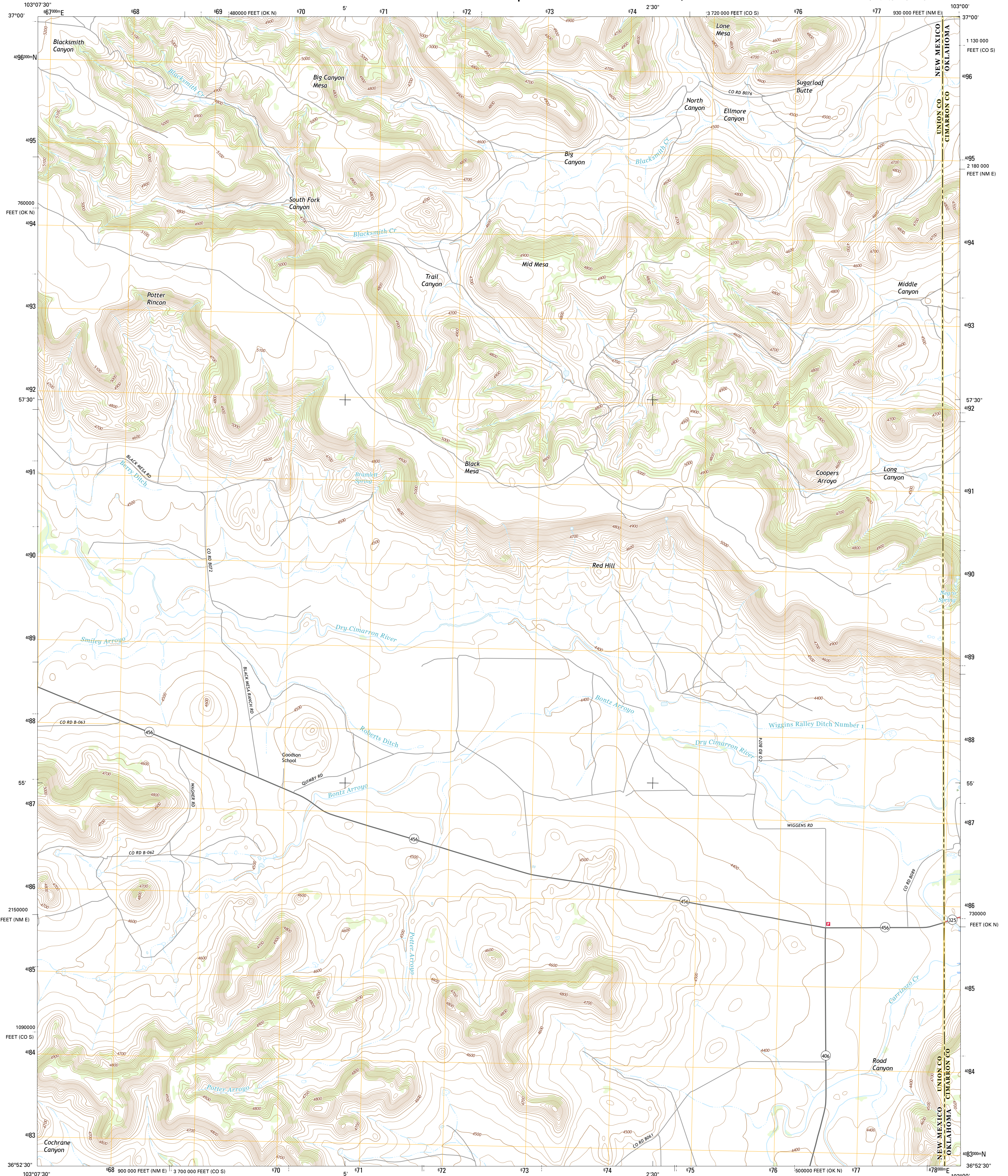




U.S. DEPARTMENT OF THE INTERIOR
U.S. GEOLOGICAL SURVEY



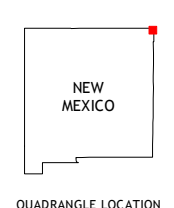
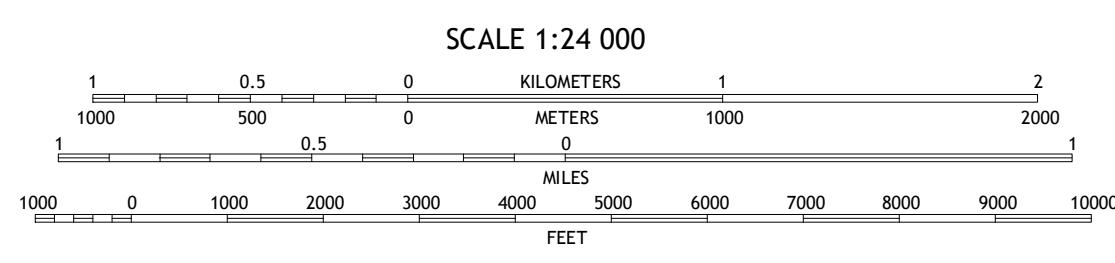
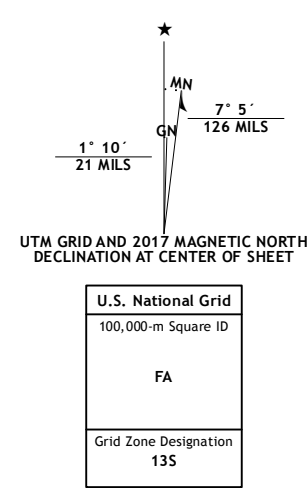
GOODSON SCHOOL QUADRANGLE
NEW MEXICO-OKLAHOMA-COLORADO
7.5-MINUTE SERIES



Produced by the United States Geological Survey
North American Datum of 1983 (NAD83)
World Geodetic System of 1984 (WGS84) Projection and
1 000-foot ticks: New Mexico Coordinate System of 1983 (east zone), Oklahoma Coordinate System of 1983 (north zone), Colorado Coordinate System of 1983 (south zone)

This map is not a legal document. Boundaries may be generalized for this map scale. Private lands within government reservations may not be shown. Obtain permission before imagery.

Imagery.....NIP, November 2015
Roads.....U.S. Census Bureau, 2015
Roads within US Forest Service Lands.....FSTopo Data with limited Forest Service updates, 2012-2016
Names.....GNIS, 2016
Hydrography.....National Hydrography Dataset, 2015
Contours.....National Elevation Dataset, 2002
Boundaries.....Multiple sources; see metadata file 1972-2016
Public Land Survey System.....BLM, 2016
Wetlands.....FWS National Wetlands Inventory 1977-2014



ROAD CLASSIFICATION

Expressway	Local Connector
Secondary Hwy	Local Road
Ramp	4WD
Interstate Route	US Route
FS Primary Route	FS Passenger Route
	FS High Clearance Route

Check with local Forest Service unit for current travel conditions and restrictions.

1	2	3
4	5	6
7	8	

ADJOINING QUADRANGLES

- Furnish Canyon West
- Furnish Canyon East
- Big Hole Canyon
- Wedding Cake Butte
- Kenton
- Atencio
- Greenleafy Canyon
- Kenton SW

GOODSON SCHOOL, NM-OK-CO
2017

