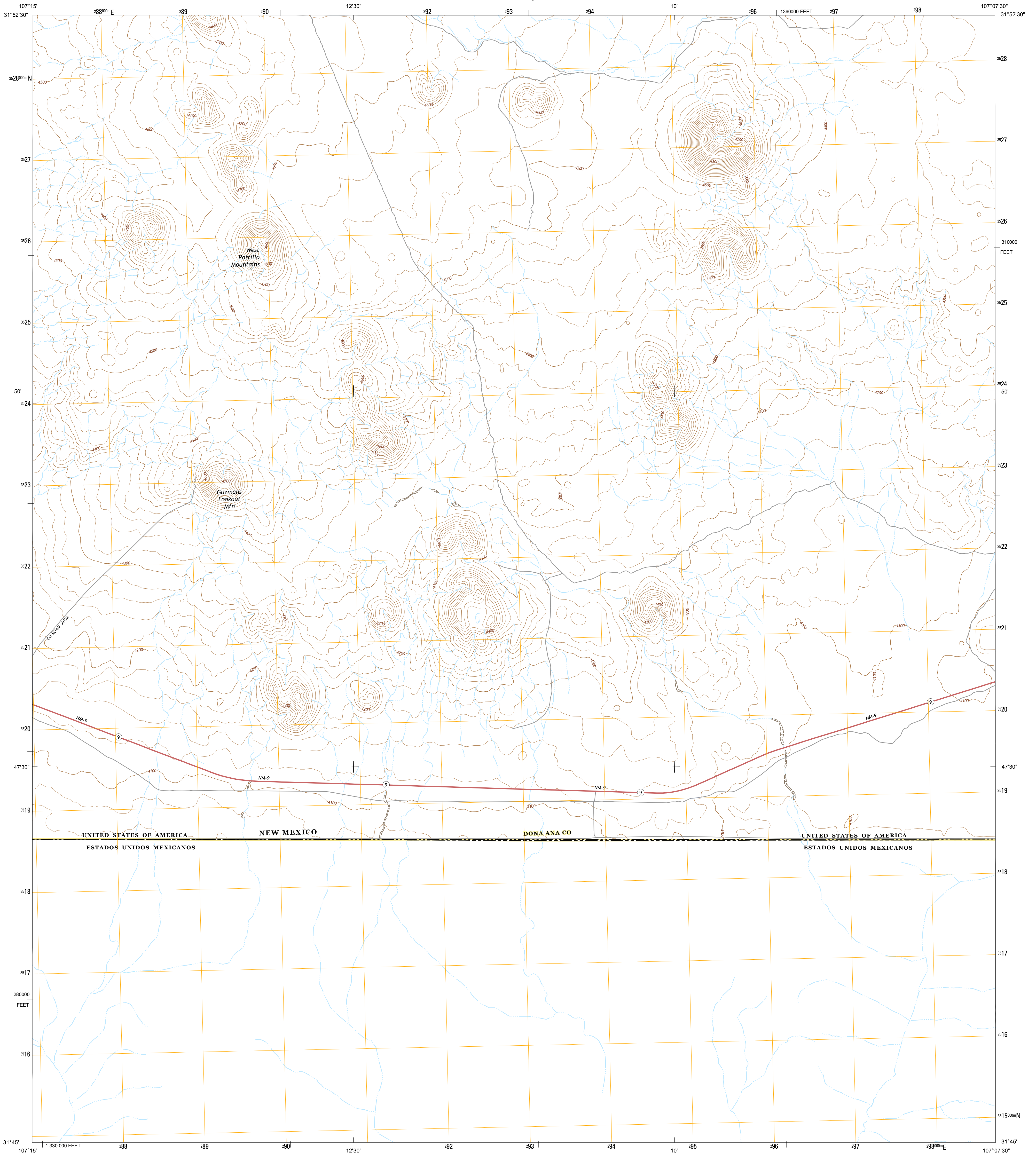




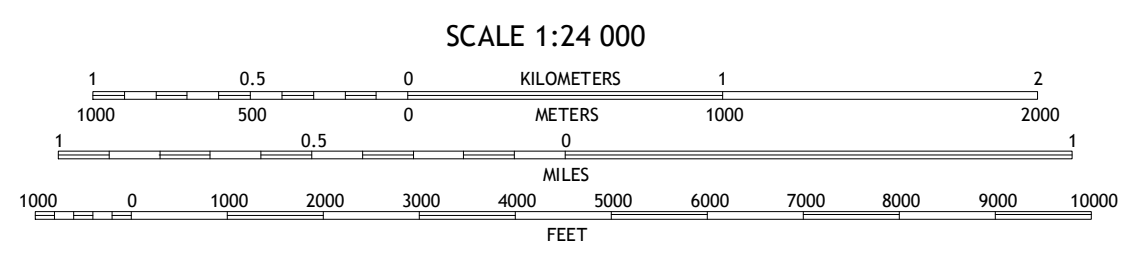
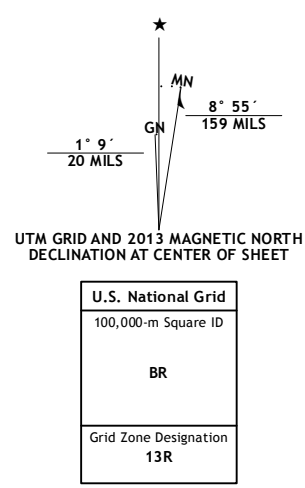
U.S. DEPARTMENT OF THE INTERIOR  
U. S. GEOLOGICAL SURVEY



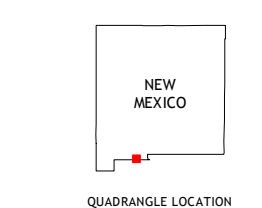
GUZMANS LOOKOUT MOUNTAIN QUADRANGLE  
NEW MEXICO-CHIHUAHUA  
7.5-MINUTE SERIES



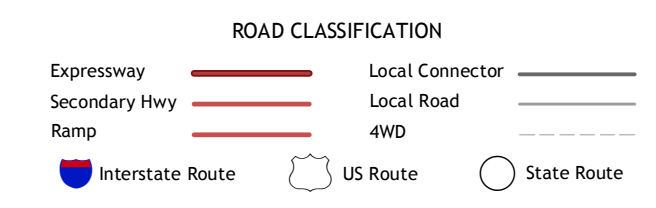
**Produced by the United States Geological Survey**  
 North American Datum of 1983 (NAD83)  
 World Geodetic System of 1984 (WGS84). Projection and  
 1 000-meter grid: Universal Transverse Mercator, Zone 13R  
 10 000-foot ticks: New Mexico Coordinate System of 1983  
 (central zone)  
 This map is not a legal document. Boundaries may be  
 generalized for this map scale. Private lands within government  
 reservations may not be shown. Obtain permission before  
 entering private lands.  
 Imagery.....NAIP, May 2011  
 Roads.....©2006-2013 TomTom  
 Names.....GNIS, 2013  
 Hydrography.....National Hydrography Dataset, 2011  
 Contours.....National Elevation Dataset, 2001  
 Boundaries.....Census, IBWC, IBC, USGS, 1972 - 2012  
 Public Land Survey System.....BLM, 2011



CONTOUR INTERVAL 20 FEET  
NORTH AMERICAN VERTICAL DATUM OF 1988  
 This map was produced to conform with the  
 National Geospatial Program US Topo Product Standard, 2011.  
 A metadata file associated with this product is draft version 0.6.15



P O L Ranch	Potrillo Peak	Mount Riley
Camel Mountain	Guzmans Lookout Mountain	Mount Riley SE



GUZMANS LOOKOUT MOUNTAIN, NM-CHH  
2013



USA 7 8 4 3 0 4 6 3 6 3 2 6 7  
 NGA REF NO. USGS X 2 K 1 B 1