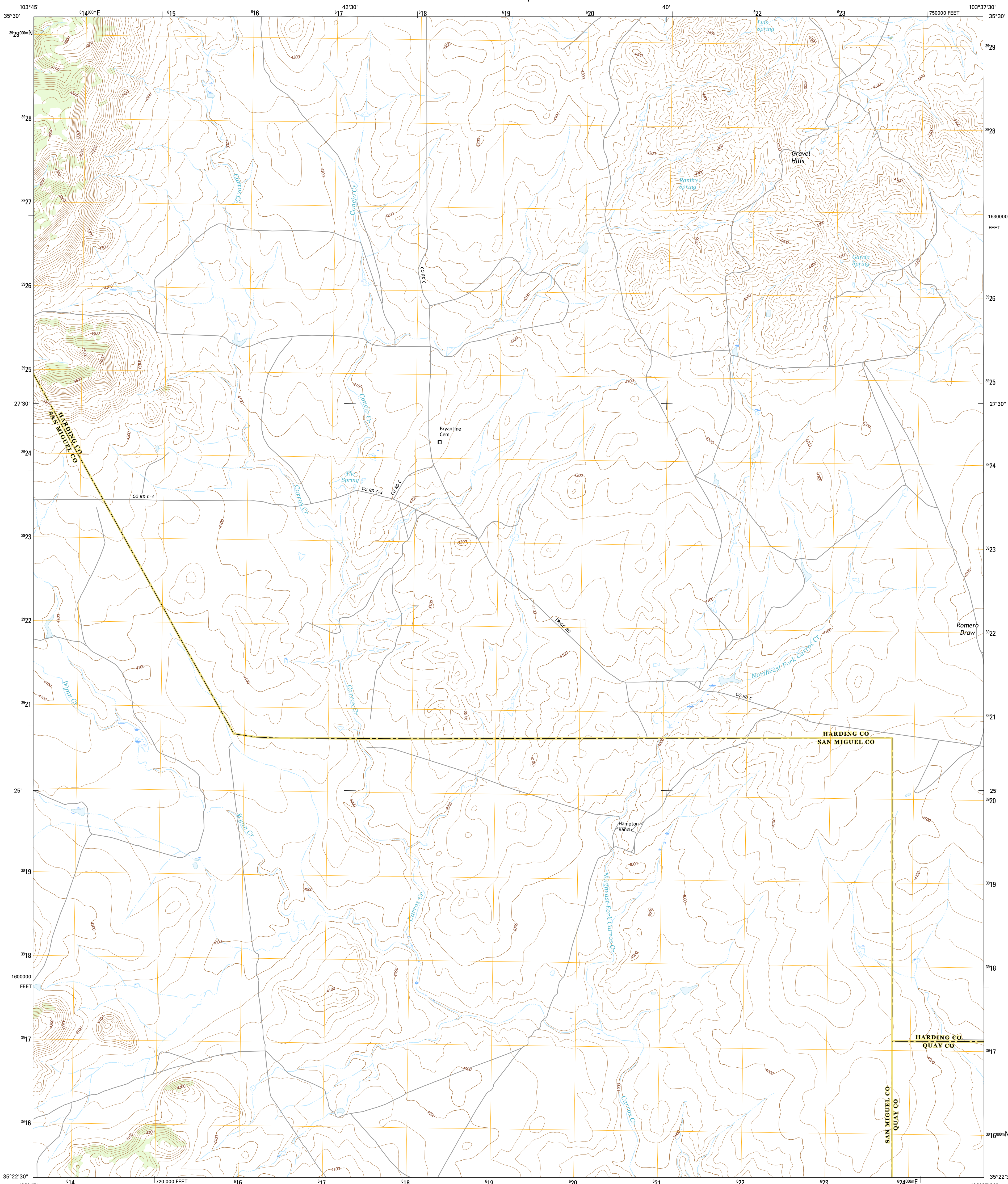




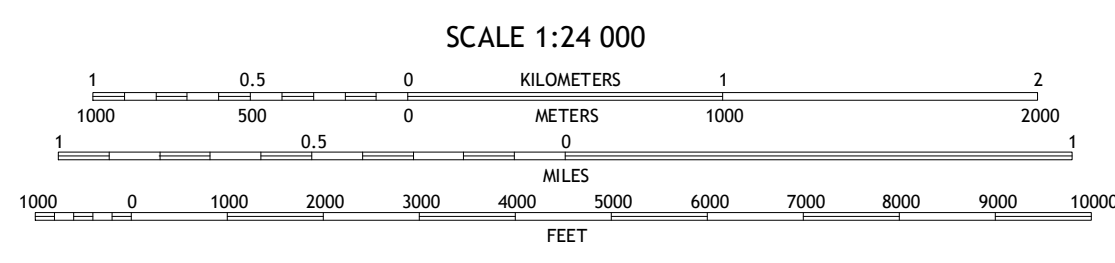
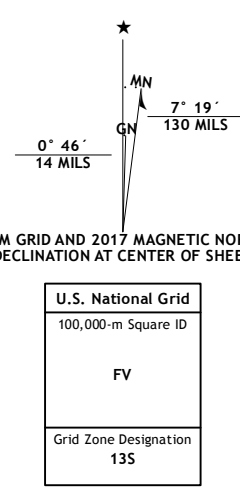
U.S. DEPARTMENT OF THE INTERIOR  
U.S. GEOLOGICAL SURVEY



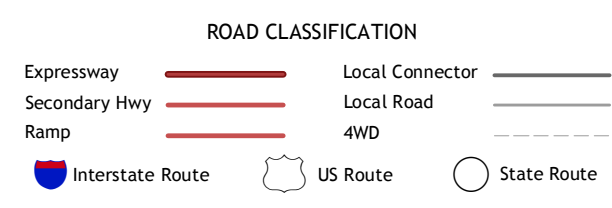
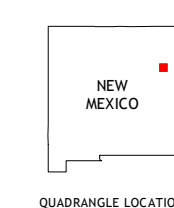
HAMPTON RANCH QUADRANGLE  
NEW MEXICO  
7.5-MINUTE SERIES



**Produced by the United States Geological Survey**  
 North American Datum of 1983 (NAD83)  
 World Geodetic System of 1984 (WGS84) Projection and  
 1 000-meter grid: Universal Transverse Mercator, Zone 13S  
 10 000-foot ticks: New Mexico Coordinate System of 1983 (east zone)  
 This map is not a legal document. Boundaries may be generalized for this map scale. Private lands within government reservations may not be shown. Obtain permission before entering private lands.  
 Imagery.....NAIP, October 2014  
 Roads.....U.S. Census Bureau, 2015 - 2016  
 Names.....GNIS, 2016  
 Hydrography.....National Hydrography Dataset, 2014  
 Contours.....National Elevation Dataset, 2001  
 Boundaries.....Multiple sources; see metadata file 1972 - 2016  
 Public Land Survey System.....BLM, 2016  
 Wetlands.....FWS National Wetlands Inventory 1977 - 2014



CONTOUR INTERVAL 20 FEET  
 NORTH AMERICAN VERTICAL DATUM OF 1988  
 This map was produced to conform with the National Geospatial Program US Topo Product Standard, 2011. A metadata file associated with this product is draft version 0.6.19



1	2	3
4	5	6
7	8	

ADJOINING QUADRANGLES

- 1 Alamosa Canyon
- 2 Gallegos
- 3 Fuentes Ranch
- 4 Medina Mesa
- 5 Montezito Creek
- 6 Trinchera Creek
- 7 Bascom Camp
- 8 Hudson

HAMPTON RANCH, NM  
2017

