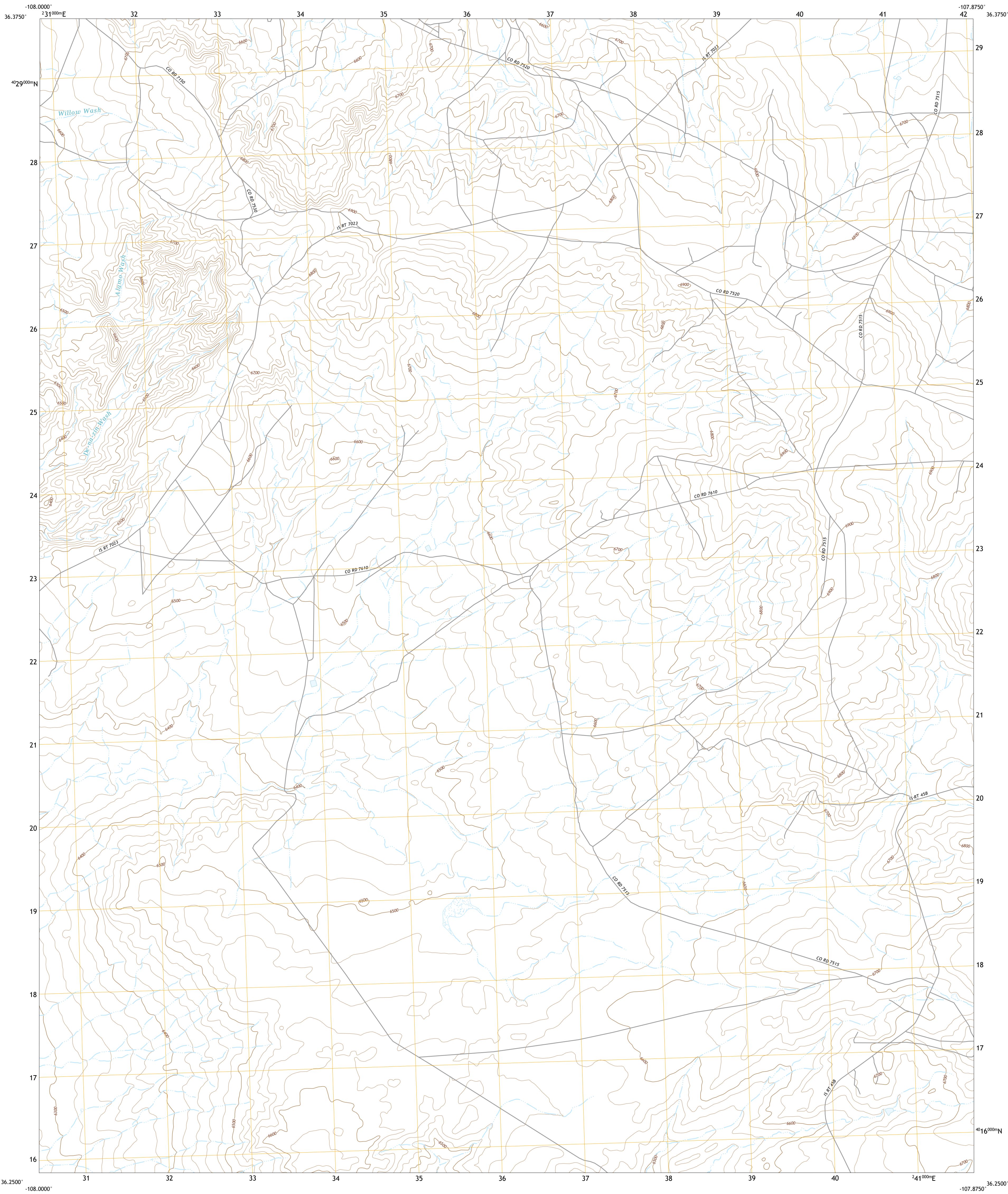




U.S. DEPARTMENT OF THE INTERIOR
U.S. GEOLOGICAL SURVEY



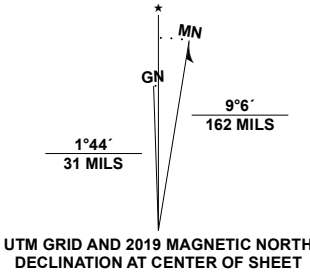
HUERFANO TRADING POST SW QUADRANGLE
NEW MEXICO - SAN JUAN COUNTY
7.5-MINUTE SERIES



Produced by the United States Geological Survey

North American Datum of 1983 (NAD83)
World Geodetic System of 1984 (WGS84) - Projection and
1 000-meter grid/Universal Transverse Mercator, Zone 12S13S
This map is not a legal document. Boundaries may be
generalized for this map scale. Private lands within government
reservations may not be shown. Obtain permission before
entering private lands.

Imagery.....NAIP, June 2016 - August 2016
Roads.....U.S. Census Bureau, 2016
Names.....GNS, Not Available
Hydrography.....National Hydrography Dataset, 2000 - 2019
Contours.....National Elevation Dataset, 2001 - 2002
Boundaries.....Multiple sources: see metadata file 2019
Public Land Survey System.....BLM, 2019
Wetlands.....FWS National Wetlands Inventory Not Available



CONTOUR INTERVAL 20 FEET
NORTH AMERICAN VERTICAL DATUM OF 1988
This map was produced to conform with the
National Geospatial Program US Topo Product Standard, 2011.
A metadata file associated with this product is draft version 0.6.18



1	2	3
4	5	6
7	8	9

- 1 Carson Trading Post
- 2 Huernfano Trading Post NW
- 3 Huernfano Trading Post
- 4 Alamo Mesa East
- 5 Blanco Trading Post
- 6 Pretty Rock
- 7 Pueblo Bonito NW
- 8 Kimbeto

- ROAD CLASSIFICATION
- Expressway
 - Secondary Hwy
 - Ramp
 - Interstate Route
 - Local Connector
 - Local Road
 - 4WD
 - US Route
 - State Route

HUERFANO TRADING POST SW, NM

2020

