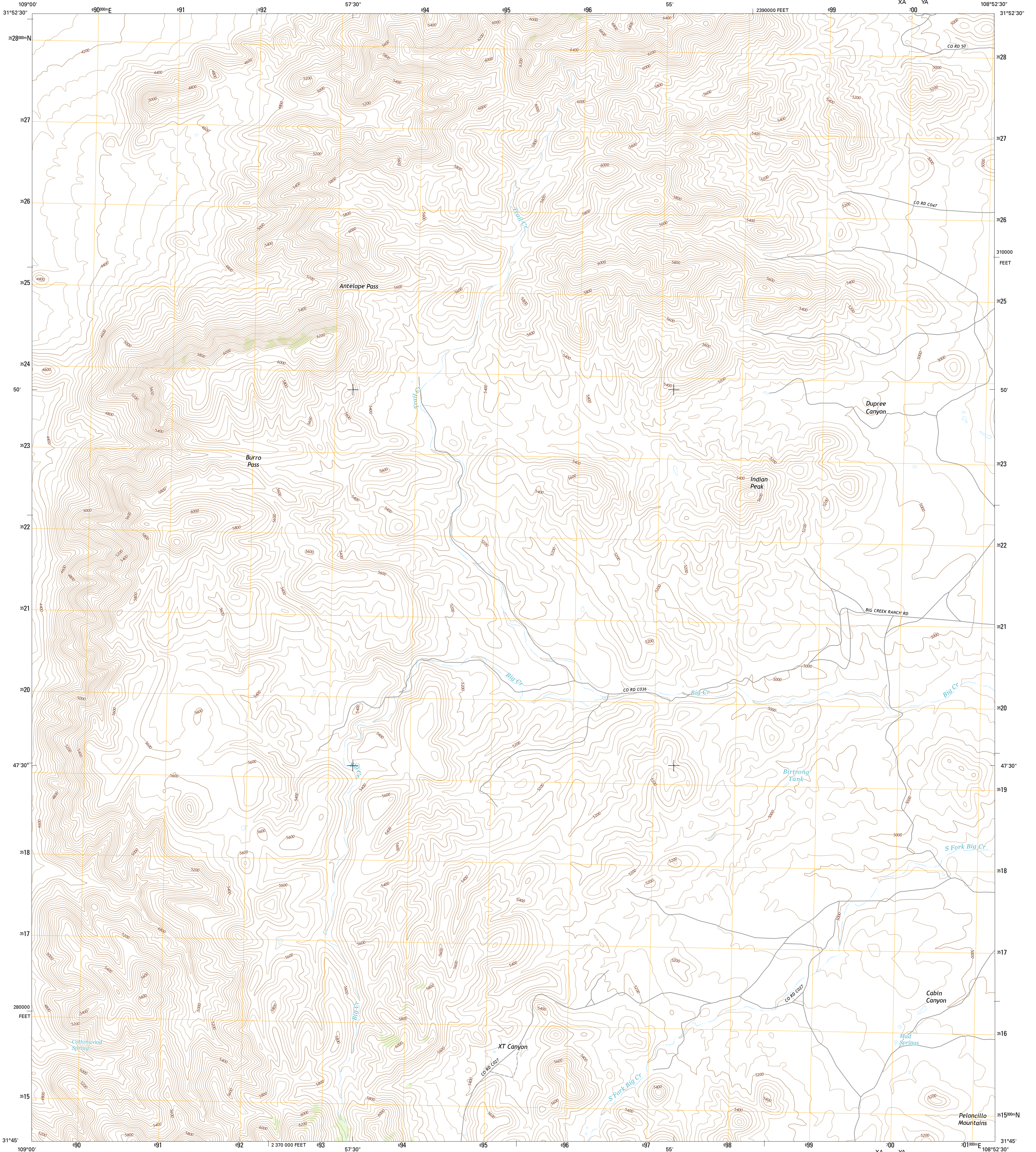




U.S. DEPARTMENT OF THE INTERIOR  
U.S. GEOLOGICAL SURVEY



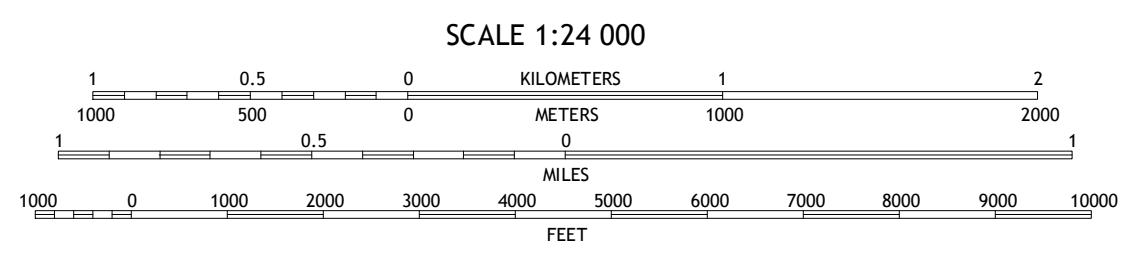
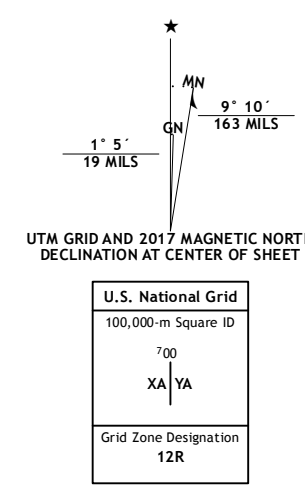
INDIAN PEAK QUADRANGLE  
NEW MEXICO-HIDALGO CO.  
7.5-MINUTE SERIES



**Produced by the United States Geological Survey**  
North American Datum of 1983 (NAD83)  
World Geodetic System of 1984 (WGS84)  
Projection and 1 000-meter grid: Universal Transverse Mercator, Zone 12R  
10 000-foot ticks: New Mexico Coordinate System of 1983 (west zone)

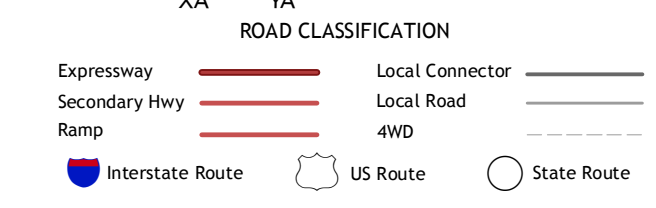
This map is not a legal document. Boundaries may be generalized for this map scale. Private lands within government reservations may not be shown. Obtain permission before entering private lands.

Imagery: NADP, October 2014  
Roads: U.S. Census Bureau, 2015 - 2016  
Names: GNIS, 2016  
Hydrography: National Hydrography Dataset, 2014  
Contours: National Elevation Dataset, 2001  
Boundaries: Multiple sources; see metadata file 1972 - 2016  
Public Land Survey System: BLM, 2016  
Wetlands: FWS National Wetlands Inventory 1977 - 2014



CONTOUR INTERVAL 40 FEET  
NORTH AMERICAN VERTICAL DATUM OF 1988

This map was produced to conform with the National Geospatial Program US Topo Product Standard, 2011. A metadata file associated with this product is draft version 0.6.19



1	2	3
4	5	6
7	8	

ADJOINING QUADRANGLES

- 1 Portal NE
- 2 Antelope Pass
- 3 Animas
- 4 Rodeo
- 5 Tank Mountain
- 6 Skull Canyon
- 7 Mount Baldy
- 8 Animas Peak NE

INDIAN PEAK, NM  
2017

