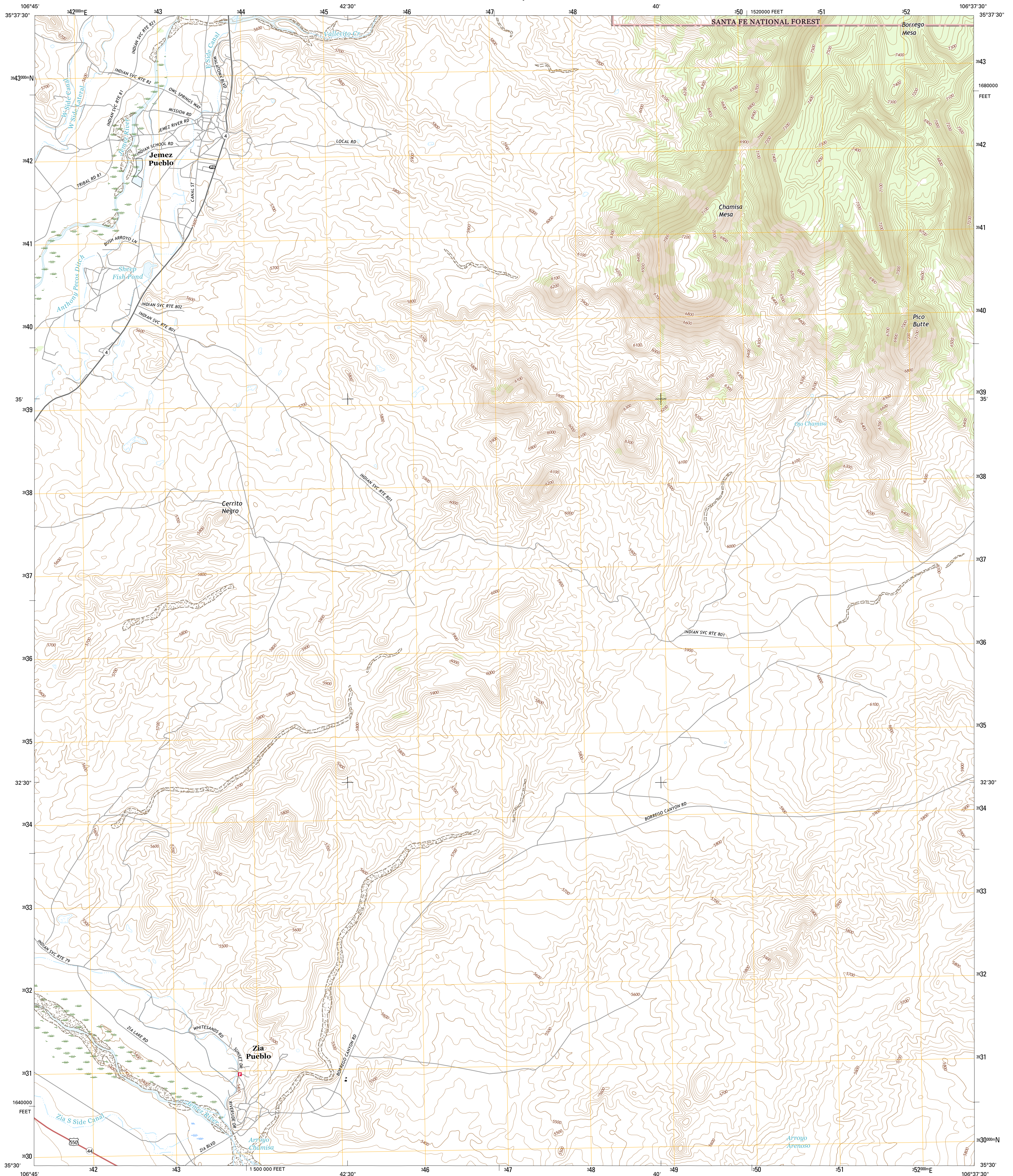




U.S. DEPARTMENT OF THE INTERIOR  
U.S. GEOLOGICAL SURVEY



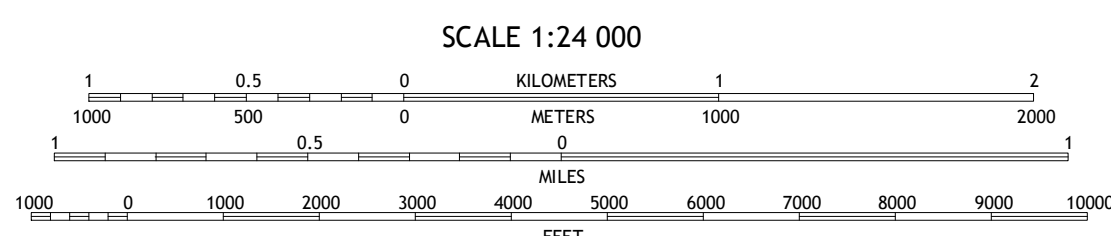
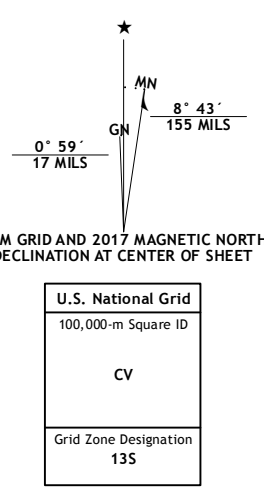
JEMEZ PUEBLO QUADRANGLE  
NEW MEXICO-SANDOVAL CO.  
7.5-MINUTE SERIES



Produced by the United States Geological Survey  
North American Datum of 1983 (NAD83)  
World Geodetic System of 1984 (WGS84). Projection and  
1 000-foot ticks: New Mexico Coordinate System of 1983  
(central zone)

This map is not a legal document. Boundaries may be  
generalized for this map scale. Private lands within government  
reservations may not be shown. Obtain permission before  
entering private lands.

Imagery.....NAIP September 2014  
Roads.....U.S. Census Bureau 2015 2016  
Roads within US Forest Service Lands.....FSTopo Data  
with limited Forest Service updates, 2012-2016  
Names.....GNIS, 2016  
Hydrography.....National Hydrography Dataset, 2014  
Contours.....National Elevation Dataset, 1999  
Boundaries.....Multiple sources; see metadata file 1972-2016  
Public Land Survey System.....BLM 2016  
Wetlands.....FWS National Wetlands Inventory 1977-2014



CONTOUR INTERVAL 20 FEET  
NORTH AMERICAN VERTICAL DATUM OF 1988

This map was produced to conform with the  
National Geospatial Program US Topo Product Standard, 2011.  
A metadata file associated with this product is draft version 0.6.19



ROAD CLASSIFICATION

Expressway	Local Connector
Secondary Hwy	Local Road
Ramp	4WD
Interstate Route	US Route
FS Primary Route	FS Passenger Route
	FS High Clearance Route

Check with local Forest Service unit  
for current travel conditions and restrictions.

ADJOINING QUADRANGLES

1	2	3
4	5	6
7	8	

- 1 Gilman
  - 2 Ponderosa
  - 3 Bear Springs Peak
  - 4 San Ysidro
  - 5 Loma Creston
  - 6 Cerro Conejo
  - 7 Bernalillo NW
  - 8 Santa Ana Pueblo
- JEMEZ PUEBLO, NM  
2017

