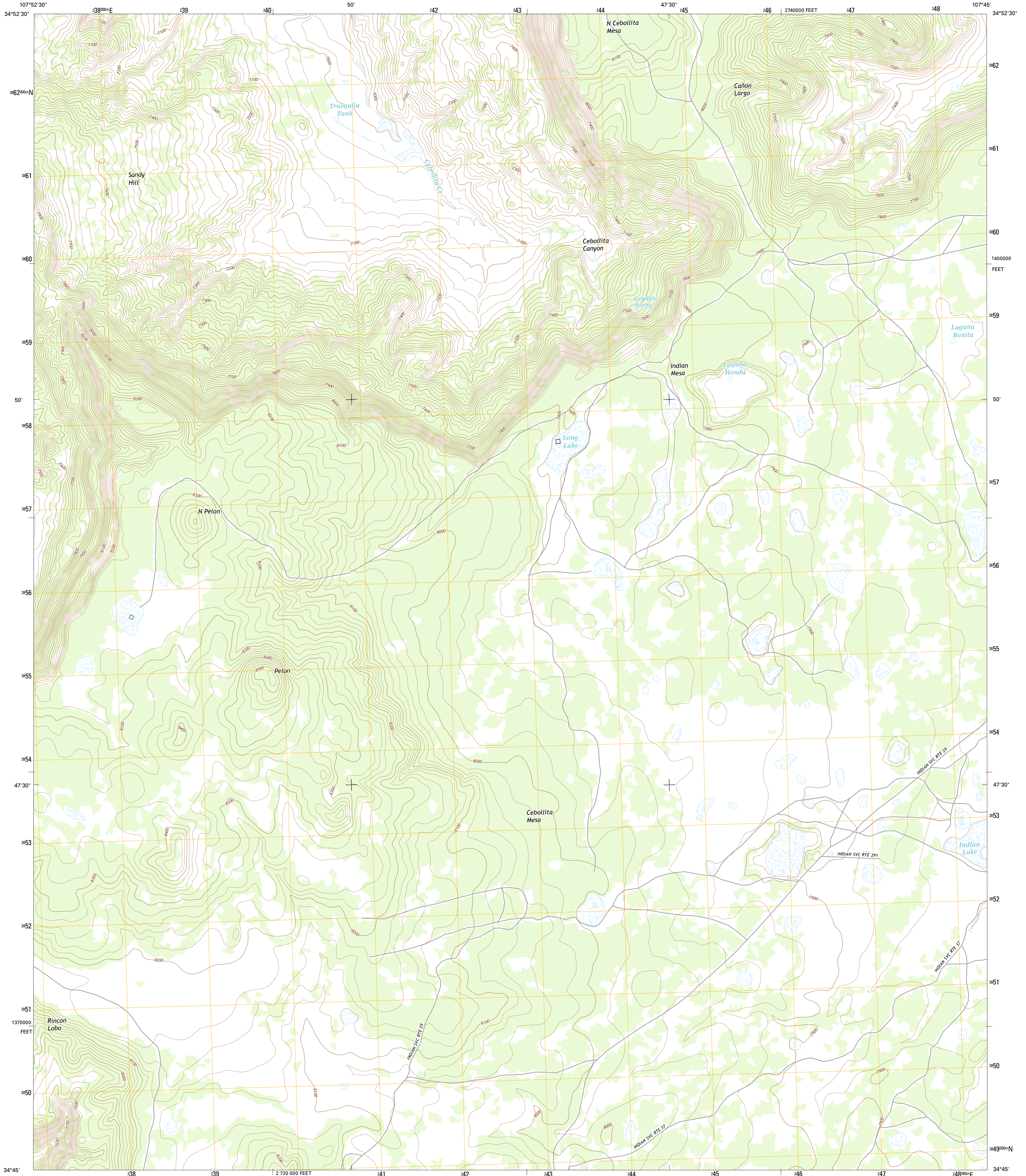




U.S. DEPARTMENT OF THE INTERIOR
U.S. GEOLOGICAL SURVEY



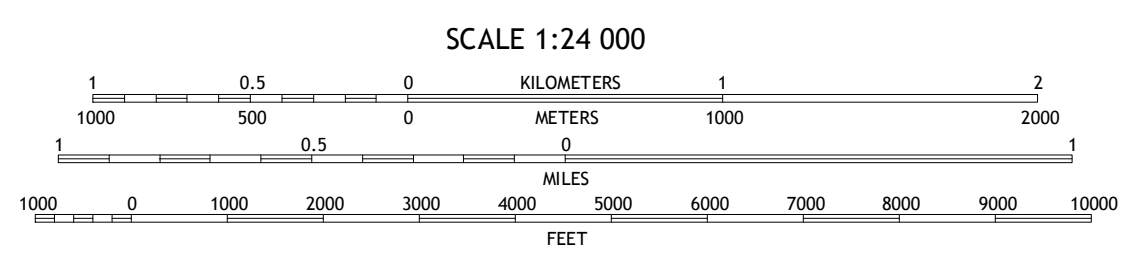
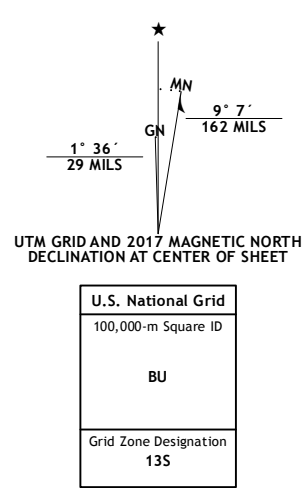
LAGUNA HONDA QUADRANGLE
NEW MEXICO-CIBOLA CO.
7.5-MINUTE SERIES



Produced by the United States Geological Survey
 North American Datum of 1983 (NAD83)
 World Geodetic System of 1984 (WGS84) Projection and
 1 000-meter grid: Universal Transverse Mercator, Zone 13S
 10 000-foot ticks: New Mexico Coordinate System of 1983 (west zone)

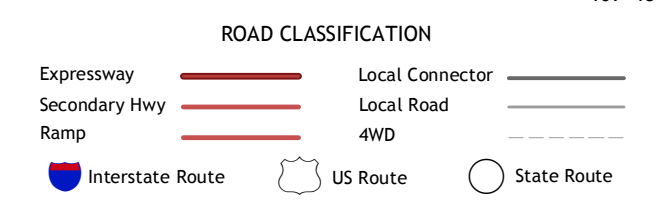
This map is not a legal document. Boundaries may be generalized for this map scale. Private lands within government reservations may not be shown. Obtain permission before entering private lands.

Imagery.....N.A.I.P., September 2014
 Roads.....U.S. Census Bureau, 2015 - 2016
 Names.....GNIS, 2016
 Hydrography.....National Hydrography Dataset, 2014
 Contours.....National Elevation Dataset, 2000
 Boundaries.....Multiple sources; see metadata file 1972 - 2016
 Public Land Survey System.....BLM, 2016
 Wetlands.....FWS National Wetlands Inventory 1977 - 2014



CONTOUR INTERVAL 20 FEET
 NORTH AMERICAN VERTICAL DATUM OF 1988

This map was produced to conform with the National Geospatial Program US Topo Product Standard, 2011. A metadata file associated with this product is draft version 0.6.19



1	2	3
4	5	6
7	8	

ADJOINING QUADRANGLES

1 Arrosa Ranch
 2 Los Pilares
 3 Crow Point
 4 North Pasture
 5 Blue Mesa
 6 Sand Canyon
 7 Cebollita Peak
 8 Mecate Meadow

LAGUNA HONDA, NM
 2017

