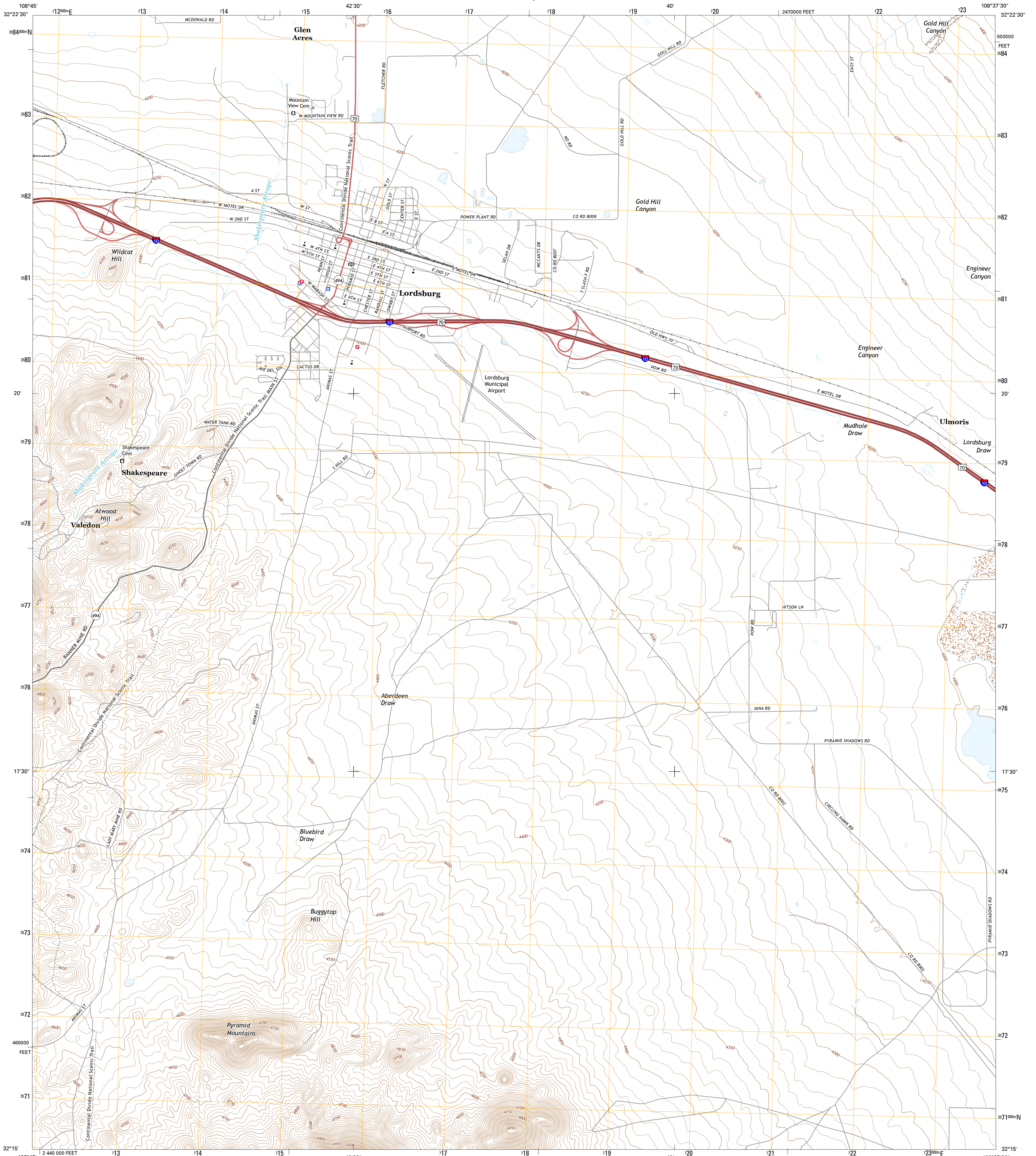




U.S. DEPARTMENT OF THE INTERIOR  
U.S. GEOLOGICAL SURVEY



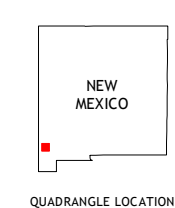
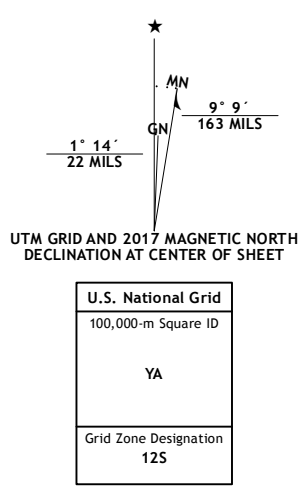
LORDSBURG QUADRANGLE  
NEW MEXICO-HIDALGO CO.  
7.5-MINUTE SERIES



**Produced by the United States Geological Survey**  
 North American Datum of 1983 (NAD83)  
 World Geodetic System of 1984 (WGS84) Projection and  
 1 000-meter grid; Universal Transverse Mercator, Zone 12S  
 10 000-foot ticks: New Mexico Coordinate System of 1983 (west zone)

This map is not a legal document. Boundaries may be generalized for this map scale. Private lands within government reservations may not be shown. Obtain permission before entering private lands.

Imagery.....N.A.I.P., October 2014  
 Roads.....U.S. Census Bureau, 2015 - 2016  
 Names.....GNIS, 2016  
 Hydrography.....National Hydrography Dataset, 2014  
 Contours.....National Elevation Dataset, 2001  
 Boundaries.....Multiple sources; see metadata file 1972 - 2016  
 Public Land Survey System.....BLM, 2016  
 Wetlands.....FWS National Wetlands Inventory 1977 - 2014



**ROAD CLASSIFICATION**

	Expressway		Local Connector
	Secondary Hwy		Local Road
	Ramp		4WD
	Interstate Route		US Route
			State Route

ADJOINING QUADRANGLES

1	2	3
4	5	6
7	8	

- Ninemile Hill
- Culberson Ranch
- Gold Hill
- Gary
- Lisbon
- Swallow Fork Peak
- Pyramid Peak
- Muir Ranch

LORDSBURG, NM  
2017

