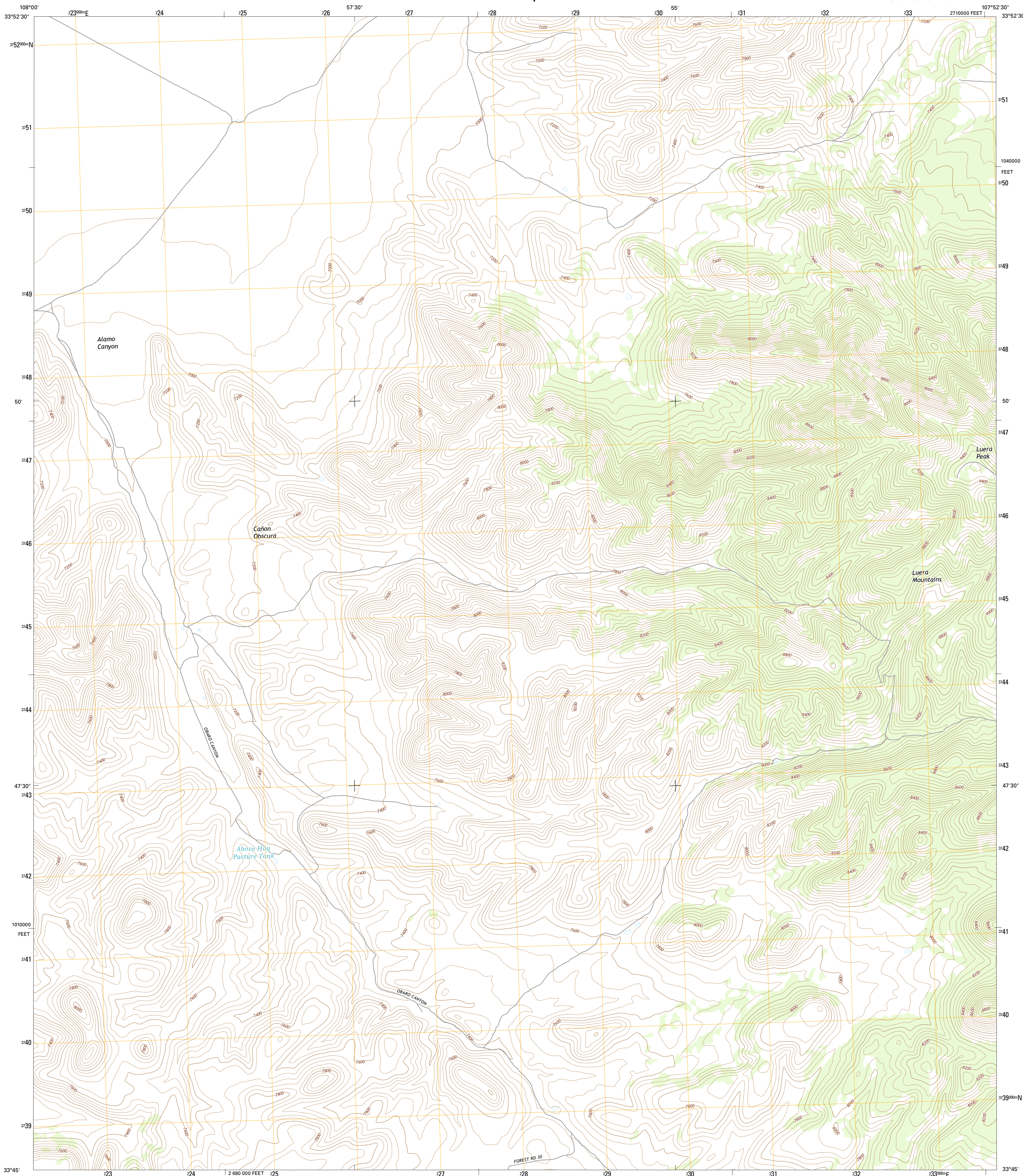




U.S. DEPARTMENT OF THE INTERIOR  
U.S. GEOLOGICAL SURVEY



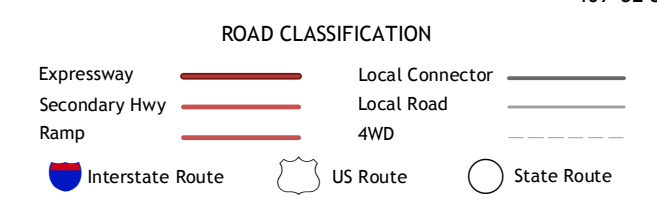
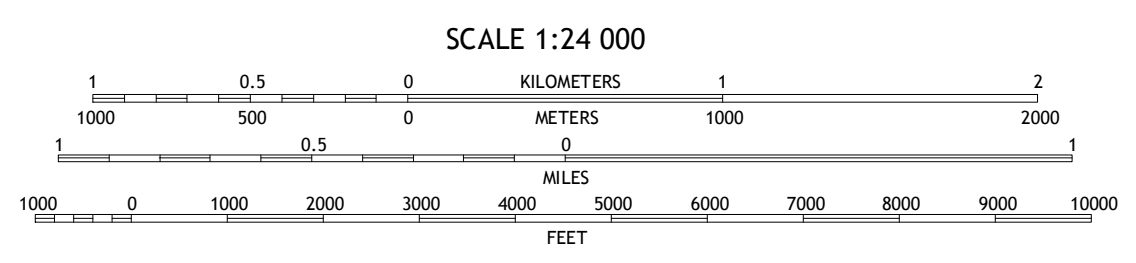
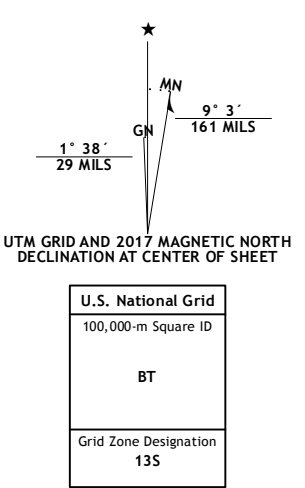
LUERA MOUNTAINS WEST QUADRANGLE  
NEW MEXICO-CATRON CO.  
7.5-MINUTE SERIES



**Produced by the United States Geological Survey**  
North American Datum of 1983 (NAD83)  
World Geodetic System of 1984 (WGS84) Projection and  
1 000-meter grid: Universal Transverse Mercator, Zone 13S  
10 000-foot ticks: New Mexico Coordinate System of 1983 (west zone)

This map is not a legal document. Boundaries may be generalized for this map scale. Private lands within government reservations may not be shown. Obtain permission before entering private lands.

ImageT1	.....NAP	October	2014
Roads	.....U.S. Census Bureau	2015 - 2016	
Names	.....GNIS	2016	
Hydrography	.....National Hydrography Dataset	2014	
Contours	.....National Elevation Dataset	2000	
Boundaries	.....Multiple sources; see metadata file	1972 - 2016	
Public Land Survey System	.....BLM	2016	
Wetlands	.....FWS National Wetlands Inventory	1977 - 2014	



CONTOUR INTERVAL 40 FEET  
NORTH AMERICAN VERTICAL DATUM OF 1988

This map was produced to conform with the National Geospatial Program US Topo Product Standard, 2011. A metadata file associated with this product is draft version 0.6.19

1	2	3
4	5	
6	7	8

ADJOINING QUADRANGLES

**LUERA MOUNTAINS WEST, NM**  
2017

